



EUROLUBE
LUBRICATION EQUIPMENT

NEX-U.® FLUID MANAGEMENT SYSTEM • OIL EQUIPMENT • GREASE EQUIPMENT

WASTE OIL EQUIPMENT • MULTI-FLUID EQUIPMENT • ADBLUE® EQUIPMENT

DIESEL EQUIPMENT • HOSE REELS • DRUM HANDLING • AIR TREATMENT

CATALOGUE 019 EXPORT

 www.eurolube.com

EUROLUBE EQUIPMENT
by Alentec & Orion AB
Grustagsvägen 4, 138 40 Älta, Sweden

EMAIL eurolube@alentec.se
PHONE +46 8-747 67 10

 www.eurolube.com

WELCOME TO EUROLUBE EQUIPMENT

Eurolube is a Swedish brand specializing in the distribution and support of environmentally-friendly products and tailor-made complete and professional solutions for the handling of lubricants and fluids. We provide quality products to partners in more than 40 countries.

Eurolube's greatest strength is our ability to quickly deliver tailor-made solutions. That, simply, is how we contribute to our partners' efficiency and their profitability.

Our vision: Eurolube is dedicated to quality solutions and support for the lubricant and fluid handling sector. We do this by developing, manufacturing and supplying products that pump, measure and dispense lubricants and fluids, and by delivering these solutions to our partners in the most economical and cost-effective manner.

Operation

Eurolube delivers high quality turnkey solutions for professional and environmentally-friendly handling of lubricants and fluids. Our range covers everything from advice to complete customized systems. These include, for example, air-operated pumps and accessories of our own design, and advanced electronic metering and measuring equipment. This means precise control of dosing and flow measurement and, with our NEX-U® fluid management system, easy connection to existing ERP systems. Our aim is to constantly develop our concept of always being able to offer cost effective solutions with cutting edge technology. Eurolube products are used by companies in the automotive workshops, manufacturing, shipping, mining and agriculture sectors.

Commitment and flexibility

We are recognized for our instant support and our comprehensive interpretation of our partners' needs, for fast order acknowledgement and for short lead times. Our expert knowledge of the rules that apply to the installation of equipment, is a strength we pass on to our partners. Reliable lead times, flexibility and total commitment are our trademarks.

The customer is our partner

We always strive for long term business relationships. We therefore feel it is very important for new customers to get to know who we are and how we think just as we always aim to understand our new customers. In plain language, we always invest the time to visit you, to learn about your operation and to establish a person-to-person connection. Interested?

Please contact us to find out more about our opportunities for a winning concept.



ISO CERTIFICATION

We are certified according to ISO 9001 and ISO 14001 which is a confirmation that we have an efficient system for management and control over quality and environmental issues.



NEX·U·®	8
NEX·U·® system components	8
OIL EQUIPMENT	20
Air operated pumps	20
Electric oil pumps	29
Hose reels for oil	32
Oil meters and guns	38
Hand operated equipment	42
Oil equipment accessories	44
Measures and funnels	49
GREASE EQUIPMENT	52
Air operated grease pumps	52
Grease pump kits	57
Hose reels for grease	61
Equipment for grease	62
Battery operated grease guns	63
Grease control valves and accessories	63
Drum covers and accessories	64
Grease fittings	67
WASTE OIL EQUIPMENT	72
Waste oil pumps	72
Equipment for pits	72
Mobile waste oil drainers with bowl	74
Waste oil handling	79
MULTI-FLUID EQUIPMENT	82
Air operated multi-fluid pumps	82
Wind screen fl / degreaser	85
Meters and control valves	87
Hand operated equipment	89
Measures and funnels	90

ADBLUE® EQUIPMENT	92
Pumps and kits	92
Hose reels for AdBlue®	93
Nozzles and meters	94
DIESEL EQUIPMENT	98
Diesel pumps	98
Diesel meters	99
Diesel nozzle	100
AIR EQUIPMENT	104
Air treatment	104
Accessories for air	105
HOSE REELS AND ACCESSORIES	108
Hose reels for standard duty	108
Heavy duty hose reels	112
Accessories for hose reels	117
DRUM HANDLING	122
Drum handling	122



NEX·U·®

NEX·U.® FLUID MANAGEMENT SYSTEM

– *Wireless flexibility + Hard-wired back-end reliability*

WHAT IS NEX·U.®?

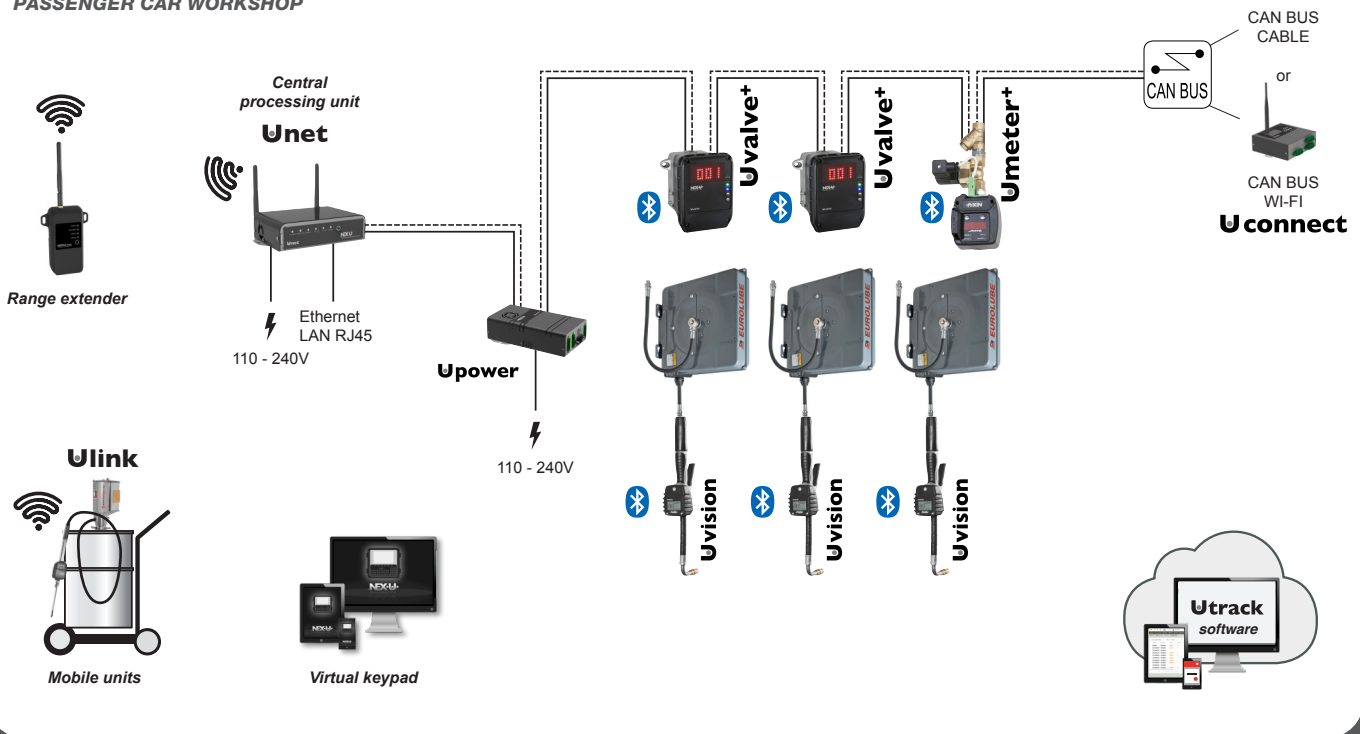
NEX·U.® provides you with the control and the information you require to make your operation more profitable. You will be able to account for every drop of lubricant and other service fluid used.

On top of this, you will carry an efficient inventory control, with automatic alerts and fluid reordering when needed, eliminating operations downtime.

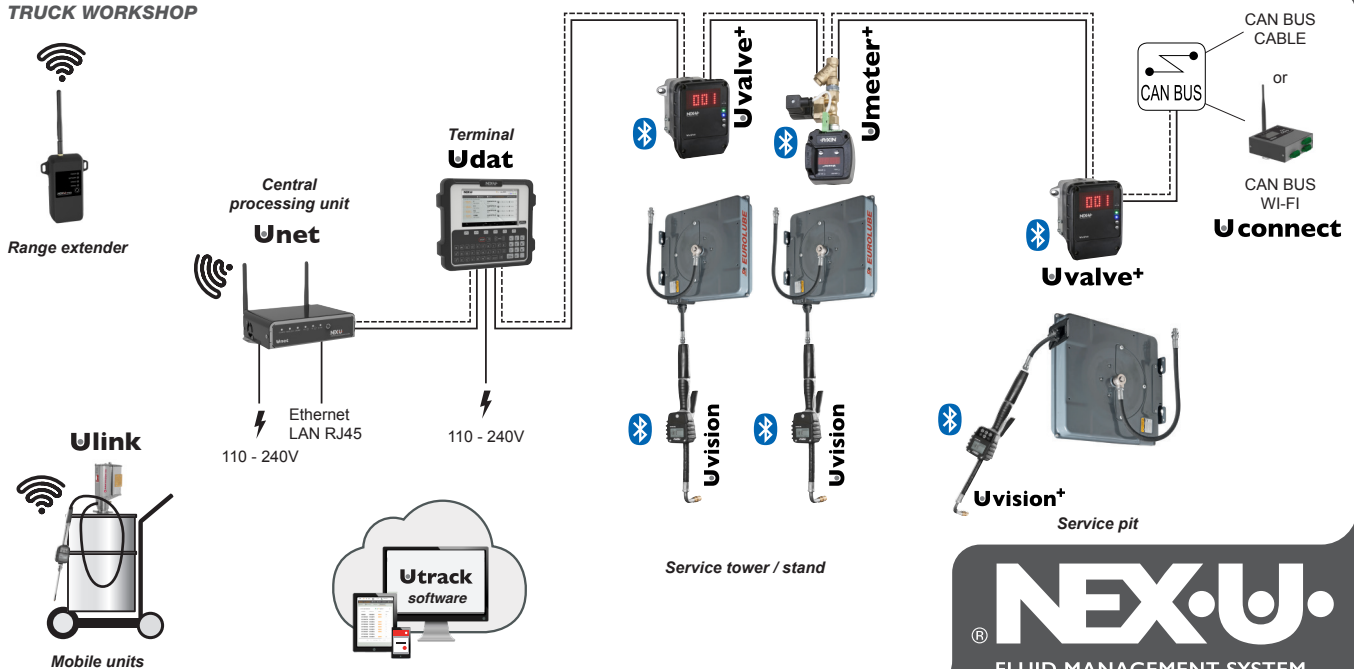
For almost any lubricant usage or operation size, with today's high cost for these fluids, NEX·U.® quickly pays for itself. Once it is paid for, savings go right to the operation's bottom line in the form of profit, profit previously lost. NEX·U.® adapts to your way of working.

INSTALLATION EXAMPLES

PASSENGER CAR WORKSHOP



TRUCK WORKSHOP



NEX-U® is a hybrid system that brings you all the advantages of wireless flexibility and hard-wired reliability

WIRELESS FLEXIBILITY

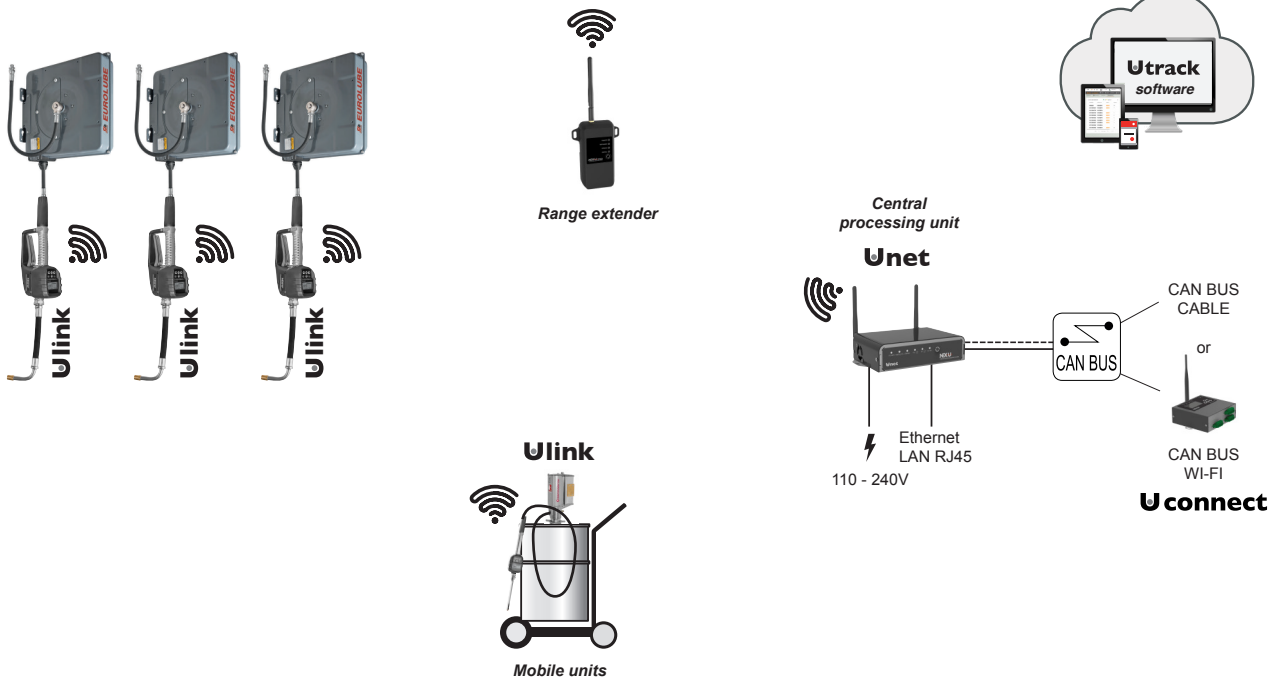
- Data can be transmitted wirelessly among the different system components, eliminating long and expensive cable runs.
- Easily adds new components when required as your needs grow.
- System uses existing Wi-Fi® networks, simplifying its installation. No need for special, custom made, network components.

HARD-WIRED RELIABILITY

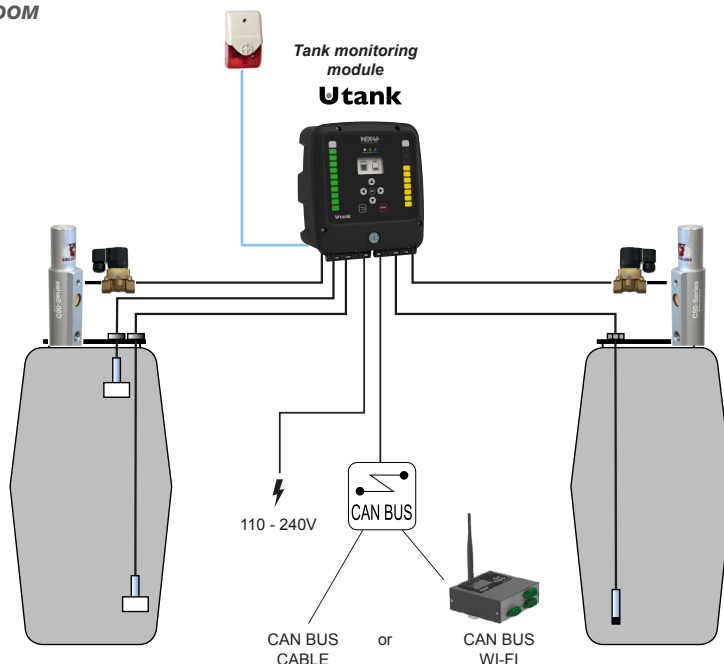
- A constant and reliable power source is always present to power the solenoid valves that control fluid delivery.
- No uncharged batteries to let you down.
- Hard-wired data transmission to avoid interferences and other obstacles which might interfere with wireless data transmission.

INSTALLATION EXAMPLES

WIRELESS SYSTEM USING U-link



STOCK ROOM



NEX-U®
FLUID MANAGEMENT SYSTEM



TYPE	TYPE	TYPE	TYPE
U-net Central processing unit	Virtual keypad	U-dat system access keypad	NEX-U® Compact
PART NO.	PART NO.	PART NO.	PART NO.
53802	53801	1 53821 2 53820	1 53822 2 53823
DATA	DATA	DATA	DATA
Description: U-net is the key NEX-U® component. It controls all the system functions and manages the wired and wireless communication among the NEX-U® components. U-net also includes the U-track software and enables DMS-integration. Communication: Ethernet port (RJ45-port), CAN bus, Wireless (U-link)	Description: Virtual Keypad license. Converts any terminal (PC, laptop, tablet or smartphone) into a NEX-U® access Keypad.	Voltage: 230 V AC 1 Description: NEX-U® access keypad with 7" colour screen and QWERTY keypad. Integrated 320W transformer to open a maximum of 8 solenoid valves. Can be used with external RFID-module, printer and barcode reader. Includes integrated RFID-module. Communication: CAN bus 2 Description: NEX-U® access keypad with 7" colour screen and QWERTY keypad. Integrated 75W transformer to open a maximum of 2 solenoid valves. Can be used with external RFID-module, printer and barcode reader. Includes integrated RFID-module. Communication: CAN bus	Voltage: 230 V AC 1 Description: Enables full control of transactions and stock level of fluids for smaller workshops. A system based in a special U-dat terminal that is able to control a maximum of 2 dispensing points. Ability to export full reports in CSV format to USB. Includes integrated RFID-module. NEX-U® Compact does not support connection to U-net Pro. 2 Description: Enables full control of transactions and stock level of fluids for smaller workshops. A system based in a special U-dat terminal that is able to control a maximum of 8 dispensing points. Ability to export full reports in CSV format to USB. Includes integrated RFID-module. NEX-U® Compact does not support connection to U-net Pro.



TYPE
NEX-U® Mobile
PART NO.
53824
DATA
<p>Voltage: 230 V AC</p> <p>Description: Enables full control of transactions and stock level of fluids for mobile service trucks. A system based in a special U-dat terminal that is able to control a maximum of 8 dispensing points. Ability to export full reports in CSV format to USB. Includes integrated RFID-module. NEX-U® Mobile does not support connection to U-net Pro.</p>

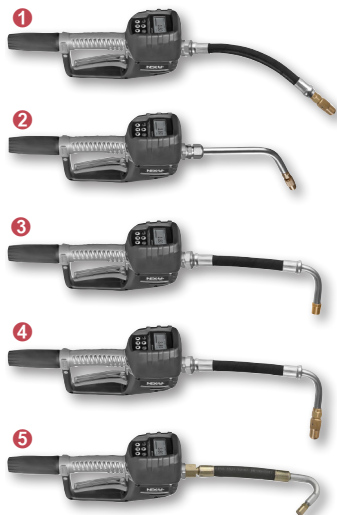
TYPE
U-vision
PART NO.
53830
DATA
<p>Description: Hand-held display module to fit an 1/2" control handle. Includes a backlight display to show delivered volume and operation progress. U-vision can be connected to: U-valve, U-meter+, U-count. Communication: Bluetooth®</p>

TYPE
U-vision+
PART NO.
53831
DATA
<p>Description: Hand-held display module with keypad to fit an 1/2" control handle. Ability to start a dispense directly from the hand-held unit. Includes a backlight display to show delivered volume and operation progress. U-vision can be connected to: U-valve, U-meter+, U-count. Communication: Bluetooth®</p>

TYPE
U-count
PART NO.
53836
DATA
<p>Description: U-count is used to control 1 solenoid valve and a U-pulser or external pulse meter. LED display that shows the delivered volume and can be connected to U-vision or U-vision+. Communication: CAN bus, Bluetooth®</p>



TYPE	TYPE	TYPE	TYPE
U-view	U-tank	U-power	U-connect
PART NO.	PART NO.	PART NO.	PART NO.
53835	53829	1 53826 2 53827 3 53828	53881
DATA	DATA	DATA	DATA
Description: Big remote LED display that shows the delivered volume through U-valve, U-meter, U-meter+. Communication: CAN bus	Voltage: 230 V AC Description: Real-time inventory control, controlling two tanks using digital or analogical level gauges. Solenoid valves control output for pump control and to external warning devices. Two independent graphic level bars and a display to show the inventory available in each tank. Communication: CAN bus. Solenoid valve output 24V DC, max 2 per port.	Voltage: 230 V AC 1 Description: Power supply to a maximum of 2 solenoid valves and other system components. U-power can be connected to: U-valve, U-meter, U-meter+, U-count, U-view, U-connect. Communication: CAN bus 2 Description: Power supply to a maximum of 8 solenoid valves and other system components. U-power can be connected to: U-valve, U-meter, U-meter+, U-count, U-view, U-connect. Communication: CAN bus 3 Description: Power supply to a maximum of 8 solenoid valves and other system components. 3 CAN bus connectors for group division on the communication line. U-power can be connected to: U-valve, U-meter, U-meter+, U-count, U-view, U-connect. Communication: CAN bus	Description: U-connect allows wireless communication via Wi-Fi among the different components of the system which are connected via CAN bus.



TYPE
U-link wireless hand meter
PART NO.
53803
DATA
<p>Description: Digital hand meter with wireless communication to U-Net. Enables monitoring of transactions via U-track. U-link can be integrated with DMS. Includes integrated solenoid valve and RFID-module. Connection: Wireless</p>

TYPE
U-link with outlet hose
PART NO.
<p>1 10522 4 10572 2 10552 5 10591 3 10571</p>
DATA
<p>Capacity: 1 - 20 l/min free flow</p> <p>Maximum working pressure: 7,0 (70) MPa (bar)</p> <p>Accuracy: 0,5 % ±</p> <p>Connection: 1/2" (F) BSP</p> <p>1 Model: NEX-U.® U-link Wireless digital hand meter with formable hose, manual non-drip nozzle 1/2" (F) BSP Oil/Glycol</p> <p>2 Model: NEX-U.® U-link Wireless digital hand meter with 60° outlet pipe and manual non-drip 1/2" (F) BSP Oil/Glycol</p> <p>3 Model: NEX-U.® U-link Wireless digital hand meter with 90° hose and automatic non-drip 1/2" (F) BSP Oil/Glycol</p> <p>4 Model: NEX-U.® U-link Wireless digital hand meter with 90° hose and manual non-drip 1/2" (F) BSP Oil/Glycol</p> <p>5 Model: NEX-U.® U-link Wireless digital hand meter with 135° hose and automatic non-drip 1/2" (F) BSP Oil/Glycol</p>

TYPE
Mobile oil dispenser with U-link wireless hand meter
PART NO.
117-90
DATA
<p>Description: Mobile oil pump kit designed to meet any needs of effective oil dispensing. Includes: 1:1 oil pump, 3m x 1/2" hose, wireless hose end meter, automatic non-drip nozzle, trolley. Drum NOT included.</p> <p>Maximum air pressure: 1,0 (10) MPa (bar)</p> <p>Pump: B11740</p>

TYPE
NEX-U.® Range extender for U-link
PART NO.
53804
DATA
<p>Description: Used to extend the range between the existing wireless connection between U-link and U-net.</p> <p>Voltage: 230 V AC</p>



TYPE
LUBE-Master Integration
PART NO.
53792
DATA
<p>Description: Software to integrate U-Net and U-link into existing LUBE-Master installations. The integration enables you to initiate a dispense from the regular LUBE-Master terminal and then use the U-link to perform the dispense from, for example, a mobile dispensing unit.</p>

TYPE
U-valve
PART NO.
53850
DATA
<p>Description: Combined pulse meter, solenoid valve, screen filter with the electronics required to control the meter. Big LED display showing the dispense point number and delivered volume. Can be connected to U-vision or U-vision+. Communication: CAN bus, Bluetooth®</p> <p>Connection: 1/2" (F)-(F) BSP</p>

TYPE
U-meter
PART NO.
<p>1 53860 3 53862 2 53866 4 53864</p>
DATA
<p>1 Model: NEX-U·@ U-meter Flow meter aluminium 1/2"</p> <p>Connection: 1/2" (F) BSP</p> <p>2 Model: NEX-U·@ U-meter Flow meter aluminium 3/4"</p> <p>Connection: 3/4" (F) BSP</p> <p>3 Model: NEX-U·@ U-meter Flow meter PVC, 1/2"</p> <p>Connection: 1/2" (F) BSP</p> <p>4 Model: NEX-U·@ U-meter Flow meter Stainless steel 1/2"</p> <p>Connection: 1/2" (F) BSP</p>

TYPE
U-meter+ with Bluetooth®
PART NO.
<p>1 53861 2 53863 3 53865</p>
DATA
<p>1 Model: NEX-U·@ U-meter+ Flow meter aluminium 1/2" with Bluetooth®</p> <p>Connection: 1/2" (F) BSP</p> <p>2 Model: NEX-U·@ U-meter+ Flow meter PVC, 1/2" with Bluetooth®</p> <p>Connection: 1/2" (F) BSP</p> <p>3 Model: NEX-U·@ U-meter+ Flow meter Stainless steel 1/2" with Bluetooth®</p> <p>Connection: 1/2" (F) BSP</p>

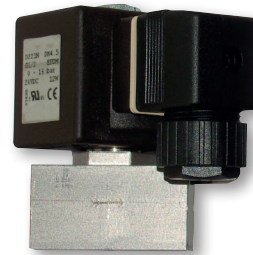
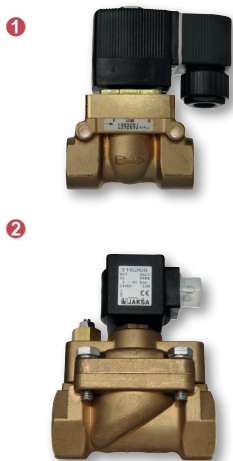


TYPE
U-pulsur aluminium
PART NO.
<p>1 1168813</p> <p>2 1168816</p> <p>3 53868</p>
DATA
<p>Media: Oil/Glycol</p> <p>Accuracy: 0,5 % ±</p> <p>Material: Aluminium</p> <p>1 Capacity: 1-30 l/min free flow</p> <p>Maximum working pressure: 6,0 (60) MPa (bar)</p> <p>PPU: 328</p> <p>Connection: 1/2" (F) BSP</p> <p>2 Capacity: 8-80 l/min free flow</p> <p>Maximum working pressure: 6,0 (60) MPa (bar)</p> <p>PPU: 109</p> <p>Connection: 3/4" (F) BSP</p> <p>3 Capacity: 10 - 80 l/min free flow</p> <p>Maximum working pressure: 10 (100) MPa (bar)</p> <p>PPU: 110</p> <p>Connection: 1" (F) BSP</p>

TYPE
U-pulsur stainless steel / PVC
PART NO.
<p>1 1168814</p> <p>2 1168815</p>
DATA
<p>Accuracy: 0,5 % ±</p> <p>Connection: 1/2" (F) BSP</p> <p>1 Media: Windscreen fluid/AdBlue®/Fluids</p> <p>Capacity: 1-50 l/min free flow</p> <p>Maximum working pressure: 6 (60) MPa (bar)</p> <p>PPU: 320</p> <p>Seals: FKM / Viton®</p> <p>Material: Stainless steel</p> <p>2 Media: Windscreen fluid/AdBlue®/Fluids</p> <p>Capacity: 1-50 l/min free flow</p> <p>Maximum working pressure: 3,0 (30) MPa (bar)</p> <p>PPU: 320</p> <p>Seals: FKM / Viton®</p> <p>Material: PVC</p>

TYPE
U-meter complete meter unit
PART NO.
<p>1 53870 4 53875</p> <p>2 53872 5 53877</p> <p>3 53874</p>
DATA
<p>Voltage: 24 V DC</p> <p>1 Media: Oil/Glycol</p> <p>Maximum pressure: 5 (50) MPa (bar)</p> <p>Connection: 1/2" (M)-(M) BSP</p> <p>2 Media: Oil/Glycol</p> <p>Maximum pressure: 6 (60) MPa (bar)</p> <p>Connection: 3/4" (M)-(M) BSP</p> <p>3 Media: Oil/Diesel</p> <p>Maximum pressure: 1 (10) MPa (bar)</p> <p>Connection: 3/4" (M)-(M) BSP</p> <p>4 Media: AdBlue®</p> <p>Maximum pressure: 1 (10) MPa (bar)</p> <p>Connection: 1/2" (M)-(M) BSP</p> <p>5 Media: Windscreen fluid</p> <p>Maximum pressure: 5 (50) MPa (bar)</p> <p>Connection: 1/2" (M)-(M) BSP</p>

TYPE
U-meter+ complete meter unit with Bluetooth®
PART NO.
<p>1 53871</p> <p>2 53876</p> <p>3 53878</p>
DATA
<p>Voltage: 24 V DC</p> <p>1 Media: Oil/Glycol</p> <p>Maximum pressure: 5 (50) MPa (bar)</p> <p>Connection: 1/2" (M)-(M) BSP</p> <p>2 Media: AdBlue®</p> <p>Maximum pressure: 1 (10) MPa (bar)</p> <p>Connection: 1/2" (M)-(M) BSP</p> <p>3 Media: Windscreen fluid</p> <p>Maximum pressure: 5 (50) MPa (bar)</p> <p>Connection: 1/2" (M)-(M) BSP</p>

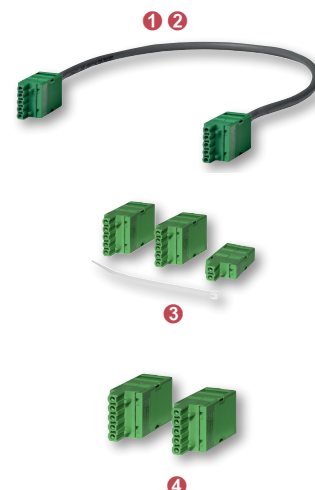
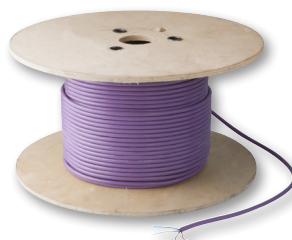
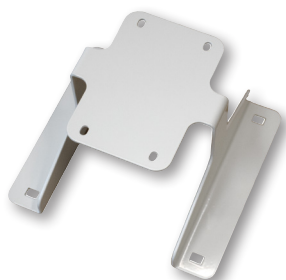


TYPE
Solenoid valves for fluids
PART NO.
<ul style="list-style-type: none"> 1 1168574 2 1168964 3 1168980
DATA
Voltage: 24 V DC 1 Media: Various Maximum pressure: 5 (50) MPa (bar) Material: Brass Connection: 1/2" (F)-(F) BSP 2 Media: Various Maximum pressure: 5 (50) MPa (bar) Material: Brass Connection: 3/4" (F)-(F) BSP 3 Media: Diesel Maximum pressure: 1 (10) MPa (bar) Material: Brass Connection: 3/4" (F) BSP

TYPE
Solenoid valve for waste oil
PART NO.
1168985
DATA
Media: Waste oil Air connection: 1/4" (F) BSP Maximum air pressure: max 0,1-0,4 (1-4) MPa (bar) Maximum working pressure: 1 (10) MPa (bar) Voltage: 24 V DC Material: Brass Connection: 1 1/2" (F) BSP

TYPE
Solenoid valve for AdBlue®
PART NO.
1168578
DATA
Media: AdBlue® Maximum pressure: 1 (10) MPa (bar) Material: Stainless steel Connection: 1/2" (F)-(F) BSP

TYPE
Solenoid valves for air
PART NO.
<ul style="list-style-type: none"> 1 3368514 2 3318791 3 3318795
DATA
1 Maximum pressure: 1,5 (15) MPa (bar) Voltage: 24 V DC Connection: 1/4" (F)-(F) BSP 2 Maximum pressure: 1,5 (15) MPa (bar) Voltage: 24 V DC Connection: 1/2" (F)-(F) BSP 3 Maximum pressure: 1,5 (15) MPa (bar) Voltage: 24 V DC/ V AC Connection: 1/4" (F)-(F) BSP

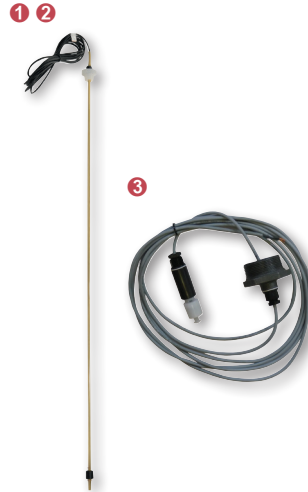
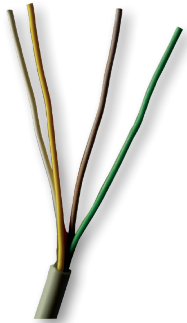


TYPE
Power supply unit with relay for waste oil pumps
PART NO.
53197
DATA
Model: Power supply unit with relay for waste oil pumps, enclosed 24VDC 5A - 230V, used when there are more than 2 waste oil solenoid valves in the system.

TYPE
Mounting bracket for U-valve
PART NO.
53882
DATA
Description: Allow fixing U-valve on top of a hose reel stand.

TYPE
Cables
PART NO.
1 53890 4 53890-125 2 53890-25 5 53890-250 3 53890-50
DATA
1 Model: NEX-U® CAN bus cable
2 Model: NEX-U® CAN bus cable, 25 meter roll
3 Model: NEX-U® CAN bus cable, 50 meter roll
4 Model: NEX-U® CAN bus cable, 125 meter drum
5 Model: NEX-U® CAN bus cable, 250 meter drum

TYPE
Jumper cables
PART NO.
1 53892 3 53891 2 53893 4 53886
DATA
1 Model: NEX-U® CAN bus jumper cable 0,5m
2 Model: NEX-U® CAN bus jumper cable 1,0m
3 Model: NEX-U® U-meter Connectors set
4 Model: NEX-U® U-Valve Connectors set



TYPE
Signal cable
PART NO.
1 53393-50 2 53393-100
DATA
1 Description: Signal cable connects pulse meters, solenoid valves and level sensors. By using the correct, high quality cable from Eurolube Equipment, system reliability is kept to a maximum. Cable length: 50 m 2 Description: Signal cable connects pulse meters, solenoid valves and level sensors. By using the correct, high quality cable from Eurolube Equipment, system reliability is kept to a maximum. Cable length: 100 m

TYPE
Tank alarm
PART NO.
53883
DATA
Model: NEX·U·® Remote flash and acoustic alarm

TYPE
Level switch, stop level
PART NO.
1 53171 2 53183 3 53287
DATA
1 Description: Used with LUBE-Master modules 53408, 53430 or NEX·U U-tank. This model is for 208 l drum or IBC container. Max height: 1 stop level. 1080mm. Media: Oil Thread: 3/4" (M) BSP 2 Description: Used with LUBE-Master modules 53408, 53430 or NEX·U U-tank. This model is for 208 l drum or IBC container. EX IA barrier part no. 53187 is required when used with flammable fluids. 1 stop level. Max height: 1080mm. Media: Windscreen fluid Thread: 3/4" (M) BSP 3 Description: Used with LUBE-Master modules 53408, 53430 or NEX·U U-tank. Cable: 5000 mm. Connection: 2" BSP (M). Media: Oil Thread: 2" (M) BSP

TYPE
Level switch, stop and alarm levels
PART NO.
1 53191 2 53192 3 53193
DATA
1 Description: Used with LUBE-Master modules 53408, 53430 or NEX·U U-tank. This model is for 208 l drum or IBC container. Max height: 1080mm. 2 levels, alarm and stop level. Media: Oil Thread: 3/4" (M) BSP 2 Description: Used with LUBE-Master modules 53408, 53430 or NEX·U U-tank. This model is for 200l drum or IBC container. EX IA barrier part no. 53187 is required when used with flammable fluids. Max height: 1080mm. 2 levels, alarm and stop level. Media: Windscreen fluid Thread: 3/4" (M) BSP 3 Description: Used with LUBE-Master modules 53408, 53430 or NEX·U U-tank. Two levels, alarm & stop. Max height 2000 mm. Media: Oil/Glycol Thread: 1" (M) BSP

NOTES

A large rectangular area with a thin black border, containing numerous horizontal dotted lines for writing notes.

Oil equipment

Air operated pumps	20
Electric oil pumps	29
Hose reels for oil	32
Oil meters and guns	38
Hand operated equipment	42
Oil equipment accessories	44
Measures and funnels	49

AIR OPERATED PUMPS

AIR OPERATED PUMPS

C50-Series



TYPE
1:1 Transfer pumps
PART NO.
<p>1 B11740</p> <p>2 B11741</p>
DATA
<p>Ratio: 1:1</p> <p>Capacity: 40 l/min free flow</p> <p>Air connection: 1/4" (F) BSP</p> <p>Maximum air pressure: 1,0 (10) MPa (bar)</p> <p>Outlet: 3/4" (F) BSP</p> <p>1 Pump tube: 52 (917) Ø (length) mm</p> <p>2 Pump tube: 52 (212) Ø (length) mm</p>

TYPE
1:1 Transfer pump for diesel
PART NO.
117-08
DATA
<p>Description: Complete air operated pump to dispense light oils and diesel. Quiet and double acting operation and easy to fit to drum. Included 2" drum adapter, 1:1 pump B11740, 3m x 3/4" hose and control valve.</p> <p>Maximum air pressure: 1 (10) MPa (bar)</p>

TYPE
1:1 Wall pump drum & IBC
PART NO.
117-02
DATA
<p>Description: Complete air operated pump to dispense light lubricating oils in short piped systems. Quiet and double acting operation and easy to fit to drum or IBC tanks, seals in NBR/PU. Max air pr.: 1.0 MPa (150 psi).</p> <p>Includes:</p> <p>1:1 Pump B11741</p> <p>Wall bracket</p> <p>1/4" Filter regulator</p> <p>1,5 m Air line hose</p> <p>2 m Hose for oil</p> <p>3/4" Ball valve</p> <p>1,08 m suction tube c.w. 2 m suction hose.</p>

TYPE
1:1 Mobile oil dispenser for 208 l drum
PART NO.
137-46
DATA
<p>Description: Mobile oil pump kit designed to meet any needs of effective oil dispensing. Includes: 1:1 oil pump, 3m x 1/2" hose, oil gun with digital meter, automatic non-drip nozzle, trolley. Drum NOT included.</p> <p>Maximum air pressure: 1,0 (10) MPa (bar)</p> <p>Pump: B11740</p>

AIR OPERATED PUMPS



AIR OPERATED PUMPS



TYPE
1:1 Drump pump kit for 208 l drum
PART NO.
117-01
DATA
<p>Description: Complete air operated pump to dispense lubricating oils. Quiet and double acting operation and easy to fit to drum. Includes 2" drum adapter, 1/4" filter regulator, 1,5 m air line hose, 1,5 m hose for oil, 3/4" ball valve.</p> <p>Maximum air pressure: 1,0 (10) MPa (bar)</p> <p>Pump: B11740</p> <p>Seals: NBR/PU</p>

TYPE
1:1 Mobile oil dispenser with U-link wireless hand meter
PART NO.
117-90
DATA
<p>Description: Mobile oil pump kit designed to meet any needs of effective oil dispensing. Includes: 1:1 oil pump, 3m x 1/2" hose, wireless hose end meter, automatic non-drip nozzle, trolley. Drum NOT included.</p> <p>Maximum air pressure: 1,0 (10) MPa (bar)</p> <p>Pump: B11740</p>

TYPE
1:1 Oil dispenser with safety trolley
PART NO.
137-57
DATA
<p>Description: Consists of drum trolley 16860, pump B11740, 3 m hose and hose end meter 10371. The drum is placed on an safety trolley which prevents any spillage on the floor or ground. When there is no area to normally park ordinary drum trolleys at the end of the day, this is the ideal solution. Perfect for field service in construction, mining and marine sectors and other sensitive environments.</p>

TYPE
3:1 Pump for drum
PART NO.
<p>① B13760</p> <p>② B13762</p>
DATA
<p>① Ratio: 3:1</p> <p>Capacity: 22 l/min free flow</p> <p>For container: 208 l Drum</p> <p>Air connection: 1/4" (F) BSP</p> <p>Maximum air pressure: 1,0 (10) MPa (bar)</p> <p>Outlet: 3/4" (F) BSP</p> <p>Pump tube: 34 (915) Ø (length) mm</p> <p>Seals: NBR/PU</p> <p>② Ratio: 3:1</p> <p>Capacity: 22 l/min free flow</p> <p>For container: 60 l Drum</p> <p>Air connection: 1/4" (F) BSP</p> <p>Maximum air pressure: 1,0 (10) MPa (bar)</p> <p>Outlet: 3/4" (F) BSP</p> <p>Pump tube: 34 (707) Ø (length) mm</p> <p>Seals: NBR/PU</p>

AIR OPERATED PUMPS

AIR OPERATED PUMPS

C50-Series



C115-Series



TYPE
3:1 Pump stub
PART NO.
B13761
DATA
Ratio: 3:1
Capacity: 22 l/min free flow
Air connection: 1/4" (F) BSPT
Maximum air pressure: 1,0 (10) MPa (bar)
Inlet: 3/4" (F) BSP
Outlet: 3/4" (F) BSPT
Pump tube: 34 (209) Ø (length) mm
Seals: NBR/PU

TYPE
3:1 H.V. Pump stub
PART NO.
13770
DATA
Ratio: 3:1
Capacity: 120 l/min free flow
Air connection: 1/2" (F) BSP
Maximum air pressure: 1,2 (12) MPa (bar)
Inlet: 1 1/2" (F) BSP
Outlet: 3/4" (F) BSP
Pump tube: 90 (200) Ø (length) mm
Seals: NBR/PU

TYPE
3:1 Drum pump with oil gun
PART NO.
137-11
DATA
Description: Complete air operated pump to dispense lubricating oils and similar products up to SAE 90. Quiet and double acting operation and easy to fit to drum, 2" drum adapter included.
Maximum air pressure: 1,0 (10) MPa (bar)
Pump: B13760
Hose length: 3 m

TYPE
3:1 Drum pump with digital meter
PART NO.
<ul style="list-style-type: none"> ① 137-12 ② 137-12EF
DATA
① Model: 3:1 Pump kit 208 l drum, complete with digital hose end meter
Maximum air pressure: 1,0 (10) MPa (bar)
Pump: B13760
Hose length: 3 m
Meter: 10372
② Model: 3:1 Pump kit 208 l drum with approvable meter
Maximum air pressure: 1,0 (10) MPa (bar)
Pump: B13760
Hose length: 3 m
Meter: 16717

AIR OPERATED PUMPS

AIR OPERATED PUMPS



TYPE
3:1 Drum pump with mechanical meter
PART NO.
137-19
DATA
<p>Description: Complete air operated pump to dispense lubricating oils and similar products up to SAE 90. Quiet and double acting operation and easy to fit to drum, 2" drum adapter included.</p> <p>Maximum air pressure: 1,0 (10) MPa (bar)</p> <p>Pump: B13760</p> <p>Hose length: 3 m</p> <p>Meter: 16719</p>

TYPE
3:1 Drum pump with mechanical pre-set meter
PART NO.
137-27
DATA
<p>Description: Complete air operated pump to dispense lubricating oils and similar products up to SAE 90. Quiet and double acting operation and easy to fit to drum, 2" drum adapter included.</p> <p>Dimension: 12,5 (1/2") mm (inch)</p> <p>Maximum air pressure: 1,0 (10) MPa (bar)</p> <p>Pump: B13760</p> <p>Hose length: 3 m</p> <p>Meter: 16716</p>

TYPE
3:1 Drum pump for 208 l drum
PART NO.
137-01
DATA
<p>Description: Complete air operated pump to dispense lubricating oils and similar products up to SAE 90 in piped systems. Maximum recommended simultaneous use up to 3 outlets. Quiet and double acting operation and easy to fit to drum. Includes 2" drum adapter, 1/4" filter regulator, 1,5 m air line hose, 2 m hose for oil, 3/4" ball valve.</p> <p>Maximum air pressure: 1,0 (10) MPa (bar)</p> <p>Pump: B13760</p> <p>Seals: NBR/PU</p>

TYPE
3:1 Wall pump drum & IBC
PART NO.
137-02
DATA
<p>Description: Complete air operated pump to dispense lubricating oils and similar products up to SAE 90 in piped systems. Maximum recommended simultaneous use up to 3 outlets. Quiet and double acting operation and easy to fit to drum or IBC tank. Includes: wall bracket, 1/4" filter regulator, 1,5 m air line hose, 2 m hose for oil, 3/4" ball valve, 1 m suction tube c.w. 2 m suction hose.</p> <p>Maximum air pressure: 1,0 (10) MPa (bar)</p> <p>Pump: B13761</p> <p>Seals: NBR/PU</p>



TYPE
3:1 Wall pump kit for tank
PART NO.
137-03
DATA
<p>Description: Air operated pump designed to dispense lubricating oils and similar products up to SAE 90 in piped systems. Maximum recommended simultaneous use up to 3 outlets.</p> <p>Quiet and double acting operation and easy to fit to drum or tank, 2" drum adapter included, seals in NBR/PU. Max air pr.: 1.0 MPa (150 psi). Includes: wall bracket, 1/4" filter regulator, 1,5 m air line hose, 2 pcs hoses for oil, 2 pcs ball valves.</p> <p>Maximum air pressure: 1,0 (10) MPa (bar)</p> <p>Pump: B13761</p> <p>Seals: NBR/PU</p>

TYPE
3:1 Drum pump kit with hose reel
PART NO.
<p>① 137-04</p> <p>② 137-05</p>
DATA
<p>Maximum air pressure: 1,0 (10) MPa (bar)</p> <p>Seals: NBR/PU</p> <p>① Description: Complete pump kit to dispense lubricating oils and similar products up to SAE 90. Quiet and double acting operation and easy to fit to drum. Includes: 2" drum adapter, 1/4" filter regulator, 1,5m air line hose, S10 hose reel, digital meter.</p> <p>For container: 208 l Drum</p> <p>Pump: B13760</p> <p>② Description: Complete pump kit to dispense lubricating oils and similar products up to SAE 90. Quiet and double acting operation and easy to fit to drum. Includes: 2" drum adapter, 1/4" filter regulator, 1,5m air line hose, S10 hose reel, digital meter.</p> <p>For container: 60 l Drum</p> <p>Pump: B13762</p>

TYPE
3:1 Oil dispenser with safety trolley standard
PART NO.
137-60
DATA
<p>Description: Consists of an oil pump B13760, hose reel 10 m 17852 with hose end meter 10371 and drum trolley 16860. The drum is placed on an safety trolley which prevents any spillage on the floor or ground. When there is no area to normally park ordinary drum trolleys at the end of the day, this is the ideal solution. Perfect for field service in construction, mining and marine sectors and other sensitive environments.</p>

TYPE
3:1 Oil dispenser with HD safety trolley, pneumatic tyres
PART NO.
137-61
DATA
<p>Description: Consists of pump B13760, hose reel (17852) with hose end meter 10371 and trolley 16861. The drum is placed on an safety trolley which prevents any spillage on the floor or ground. When there is no area to normally park ordinary drum trolleys at the end of the day, this is the ideal solution. Perfect for field service in construction, mining and marine sectors and other sensitive environments.</p>

AIR OPERATED PUMPS

AIR OPERATED PUMPS



E80-Series



E80-Series



C115-Series



TYPE
3:1 Oil dispenser with HD safety trolley, solid tyres
PART NO.
137-62
DATA
<p>Description: Consists of pump B13760, hose reel (17852) with measuring plant 10371 and trolley 16862. The drum is placed on an safety trolley which prevents any spillage on the floor or ground. When there is no area to normally park ordinary drum trolleys at the end of the day, this is the ideal solution. Perfect for field service in construction, mining and marine sectors and other sensitive environments.</p>

TYPE
5:1 Pump for drum
PART NO.
15830
DATA
<p>Ratio: 5:1</p> <p>Air connection: 1/4" (F) BSP</p> <p>Maximum air pressure: 1,0 (10) MPa (bar)</p> <p>Inlet: -</p> <p>Outlet: 3/4" (F) BSP</p> <p>Pump tube: 52 (910) Ø (length) mm</p>

TYPE
5:1 Pump stub
PART NO.
15831
DATA
<p>Ratio: 5:1</p> <p>Air connection: 1/4" (F) BSP</p> <p>Maximum air pressure: 1,0 (10) MPa (bar)</p> <p>Inlet: 1" (F) BSP</p> <p>Outlet: 3/4" (F) BSP</p> <p>Pump tube: 52 (230) Ø (length) mm</p>

TYPE
6:1 H.V. Pump stub
PART NO.
15755
DATA
<p>Ratio: 6:1</p> <p>Capacity: 100 l/min free flow</p> <p>Air connection: 1/2" (F) BSP</p> <p>Maximum air pressure: 1,2 (12) MPa (bar)</p> <p>Inlet: 1 1/2" (F) BSP</p> <p>Outlet: 3/4" (F) BSP</p> <p>Pump tube: 70 (200) Ø (length) mm</p>

C150-Series



C150-Series



TYPE
6:1 H.V. Pump stub
PART NO.
15756
DATA
Ratio: 6:1
Capacity: 100 l/min free flow
Air connection: 1/2" (F) BSP
Maximum air pressure: 1,2 (12) MPa (bar)
Inlet: 1 1/2" (F) BSP
Outlet: 3/4" (F) BSP
Pump tube: 90 (200) Ø (length) mm

TYPE
5:1 Wall pump kit for tank
PART NO.
157-03
DATA
Maximum air pressure: 1,0 (10) MPa (bar)
Pump: 15831
Seals: NBR/PU

TYPE
5:1 Wall pump for drum & IBC
PART NO.
157-04
DATA
Maximum air pressure: 1,0 (10) MPa (bar)
Pump: 15831
Seals: NBR/PU

TYPE
12:1 Pump stub
PART NO.
15767
DATA
Ratio: 12:1
Capacity: 65 l/min free flow
Air connection: 1/2" (F) BSP
Maximum air pressure: 1,2 (12) MPa (bar)
Inlet: 1 1/2" (F) BSP
Outlet: 3/4" (F) BSP
Pump tube: 70 (198) Ø (length) mm

AIR OPERATED PUMPS

AIR OPERATED PUMPS

C115-Series



C115-Series



E80-Series



TYPE
10:1 Pump for drum
PART NO.
15765
DATA
Ratio: 10:1
Capacity: 65 l/min free flow
Air connection: 1/2" (F) BSP
Maximum air pressure: 1,2 (12) MPa (bar)
Inlet: -
Outlet: 3/4" (F) BSP
Pump tube: 54 (855) Ø (length) mm

TYPE
10:1 Stub pump
PART NO.
15766
DATA
Ratio: 10:1
Capacity: 65 l/min free flow
Air connection: 1/2" (F) BSP
Maximum air pressure: 1,2 (12) MPa (bar)
Inlet: 1 1/2" (F) BSP
Outlet: 3/4" (F) BSP
Pump tube: 54 (200) Ø (length) mm

TYPE
15:1 Pumps
PART NO.
1 15740
2 15741
DATA
Ratio: 15:1
Capacity: 15 l/min free flow
Air connection: 1/4" (F) BSP
Maximum air pressure: 1,0 (10) MPa (bar)
Outlet: 3/4" (F) BSP
Seals: PU / NBR
1 Pump tube: 50 (910) Ø (length) mm
2 Pump tube: 32 (235) Ø (length) mm

TYPE
Mobile oil dispenser for 60 l drum
PART NO.
1 137-13
2 137-14
DATA
Maximum air pressure: 1,0 (10) MPa (bar)
Pump: B13762
1 Description: Mobile oil pump kit designed to meet any needs of effective oil dispensing. Includes: 3m x 1/2" hose, oil gun, trolley. Drum NOT included.
2 Description: Mobile oil pump kit designed to meet any needs of effective oil dispensing. Includes: 3m x 1/2" hose, oil gun with digital meter, trolley. Drum NOT included.



TYPE
Mobile oil dispenser w/ 65 l tank
PART NO.
<ul style="list-style-type: none"> 1 137-17 2 137-18
DATA
<p>Maximum air pressure: 1,0 (10) MPa (bar)</p> <p>Pump: B13762</p> <p>1 Description: Mobile oil pump kit designed to meet any needs of effective oil dispensing. Includes: 3m x 1/2" hose, oil gun, mobile 65 l tank</p> <p>2 Description: Mobile oil pump kit designed to meet any needs of effective oil dispensing. Includes: 3m x 1/2" hose, oil gun with digital meter, mobile 65 l tank</p>

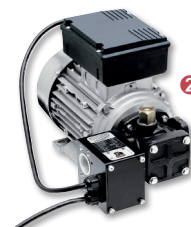
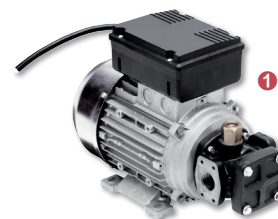
TYPE
3:1 Pump kit for 1.000 l IBC
PART NO.
<ul style="list-style-type: none"> 1 137-09 2 137-10
DATA
<p>Maximum air pressure: 1,0 (10) MPa (bar)</p> <p>Pump: B13761</p> <p>1 Description: Mobile oil pump kit designed to meet any needs of effective oil dispensing. Includes: 6 m x 1/2" hose, oil gun, suction hose, pump bracket. IBC container NOT included.</p> <p>2 Description: Mobile oil pump kit designed to meet any needs of effective oil dispensing. Includes: 6 m x 1/2" hose, oil gun with digital meter, suction hose, pump bracket. IBC container NOT included.</p>

TYPE
3:1 Pump kit for 1.000 l IBC
PART NO.
<ul style="list-style-type: none"> 1 137-25 2 137-26
DATA
<p>Maximum air pressure: 1,0 (10) MPa (bar)</p> <p>Pump: B13761</p> <p>1 Description: Mobile oil pump kit designed to meet any needs of effective oil dispensing. Includes: S10 hose reel, oil gun, suction hose, IBC bracket. IBC container NOT included.</p> <p>2 Description: Mobile oil pump kit designed to meet any needs of effective oil dispensing. Includes: S10 hose reel, oil gun with digital meter, suction hose, IBC bracket. IBC container NOT included.</p>

TYPE
5:1 Pump kit for 1.000 l IBC
PART NO.
<ul style="list-style-type: none"> 1 157-25 2 157-26
DATA
<p>Maximum air pressure: 1,0 (10) MPa (bar)</p> <p>1 Description: Oil pump kit designed to meet any needs for effective oil dispensing. Includes: 5:1 oil pump, S15 hose reel, oil gun, suction hose, IBC bracket. IBC container NOT included.</p> <p>2 Description: Oil pump kit designed to meet any needs for effective oil dispensing. Includes: 5:1 oil pump, S15 hose reel, oil gun with digital meter, suction hose, IBC bracket. IBC container NOT included.</p>

AIR OPERATED PUMPS

ELECTRIC OIL PUMPS

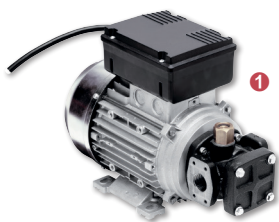


TYPE
Mobile dispenser for 208 l drum
PART NO.
1 137-15 2 137-16 3 137-46
DATA
Maximum air pressure: 1,0 (10) MPa (bar)
1 Description: Mobile oil pump kit designed to meet any needs of effective oil dispensing. Includes: 3:1 oil pump, 3m x 1/2" hose, oil gun with manual non drip nozzle, trolley. Drum NOT included.
Pump: B13760
2 Description: Mobile oil pump kit designed to meet any needs of effective oil dispensing. Includes: 3:1 oil pump, 3m x 1/2" hose, oil gun with digital meter, manual non drip nozzle, trolley. Drum NOT included.
Pump: B13760
3 Description: Mobile oil pump kit designed to meet any needs of effective oil dispensing. Includes: 1:1 oil pump, 3m x 1/2" hose, oil gun with digital meter, automatic non-drip nozzle, trolley. Drum NOT included.
Pump: B11740

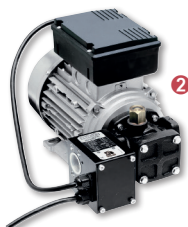
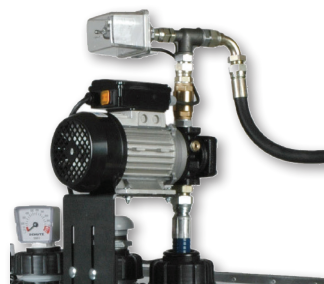
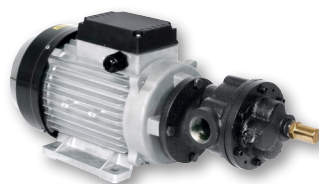
TYPE
Mobile dispenser for 208 l drum
PART NO.
1 137-23 2 137-24
DATA
Maximum air pressure: 1,0 (10) MPa (bar)
Pump: B13760
1 Description: Oil pump kit designed to meet any needs for effective oil dispensing. Includes: 3:1 oil pump, S10 hose reel, oil gun with digital meter, trolley. Drum NOT included.
2 Description: Oil pump kit designed to meet any needs for effective oil dispensing. Includes: 3:1 oil pump, S10 hose reel, oil gun with digital meter, trolley. Drum NOT included.

TYPE
Portable electric oil pumps
PART NO.
1 61012 2 61024
DATA
Capacity: 5,5 l/min free flow
Inlet: 3/4" (F) BSPT
Outlet: 1/2" (F) BSPT
IP: 55
Max suction height: 2,5 m
1 Voltage: 12 V DC
2 Voltage: 24 V DC

TYPE
Electric oil pumps 1,0 MPa
PART NO.
1 60100 2 60110
DATA
Capacity: 9 l/min free flow
Inlet: 3/4" (F) BSPT
Maximum working pressure: 1,0 (10) MPa (bar)
Voltage: 230 V AC
IP: 55
1 Outlet: 3/4" (F) BSPT
Motor: 600 W
Pressure switch: No
2 Outlet: 1" (F) BSPT
Motor: 600 W
Pressure switch: Yes



1



2

TYPE
Electric oil pumps 2,4 MPa
PART NO.
1 60300
2 60310
DATA
Capacity: 10 l/min free flow
Inlet: 3/4" (F) BSPT
Maximum working pressure: 2,4 (24) MPa (bar)
Voltage: 230 V AC
IP: 55
1 Outlet: 3/4" (F) BSPT
Motor: 600 W
Pressure switch: No
2 Outlet: 1" (F) BSPT
Motor: 780 W
Pressure switch: Yes

TYPE
Electric oil pumps HD
PART NO.
1 61614
2 61611
DATA
Inlet: 1" (F) BSPT
Outlet: 1" (F) BSPT
Maximum working pressure: 0,8 (8,0) MPa (bar)
1 Capacity: 50 l/min free flow
Motor: 1500 W
2 Capacity: 70 l/min free flow
Motor: 2000 W

TYPE
Oil pump kit for 208 l drum
PART NO.
62020
DATA
Description: Ideal solution when compressed air is not available. Self priming gear type pump, sintered precision gears and cast iron body with integrated adjustable by-pass valve in the pump body. Electronic control unit stops the pump automatically when control valve is closed and starts also automatically when control valve is opened again. Start pressure: 6 bar, stop pressure: 24 bar. Includes: oil pump, suction tube, 2m outlet hose.
Capacity: 10 l/min free flow
Maximum working pressure: 2,4 (24) MPa (bar)
Motor: 780 W
Voltage: 230 V AC
IP: 44

TYPE
Oil pump kit for Schütz-tanks
PART NO.
62021
DATA
Description: Ideal solution when compressed air is not available. Self priming gear type pump, sintered precision gears and cast iron body with integrated adjustable by-pass valve in the pump body. Electronic control unit stops the pump automatically when control valve is closed and starts also automatically when control valve is opened again. Start pressure: 6 bar, stop pressure: 24 bar. Includes: oil pump, tank connection, 2m outlet hose.
Capacity: 10 l/min free flow
Maximum working pressure: 2,4 (24) MPa (bar)
Motor: 780 W
Voltage: 230 V AC
IP: 44



TYPE
Oil pump kit for Schütz-tanks
PART NO.
62010
DATA
<p>Description: Ideal solution when compressed air is not available. Self priming gear type pump, sintered precision gears and cast iron body with integrated adjustable by-pass valve in the pump body. Electronic control unit stops the pump automatically when control valve is closed and starts also automatically when control valve is opened again. Start pressure: 6 bar, stop pressure: 24 bar. Includes: oil pump, tank connection, 4m outlet hose, digital meter, drip holster.</p> <p>Capacity: 9 l/min free flow</p> <p>Maximum working pressure: 1,0 (10) MPa (bar)</p> <p>Motor: 600 W</p> <p>Voltage: 230 V AC</p> <p>IP: 44</p>

TYPE
Oil pump kit for Schütz-tanks
PART NO.
62011
DATA
<p>Description: Ideal solution when compressed air is not available. Self priming gear type pump, sintered precision gears and cast iron body with integrated adjustable by-pass valve in the pump body. Electronic control unit stops the pump automatically when control valve is closed and starts also automatically when control valve is opened again. Start pressure: 6 bar, stop pressure: 24 bar. Includes: oil pump, tank connection, outlet hose, oil bar.</p> <p>Capacity: 9 l/min free flow</p> <p>Maximum working pressure: 1,0 (10) MPa (bar)</p> <p>Motor: 600 W</p> <p>Voltage: 230 V AC</p> <p>IP: 44</p>

TYPE
Oil pump kit for 208 l drum
PART NO.
<p>① 61013</p> <p>② 61025</p>
DATA
<p>Capacity: 4 l/min free flow</p> <p>Maximum working pressure: 0,9 (9,0) MPa (bar)</p> <p>① Motor: 200 W</p> <p>Voltage: 12 V DC</p> <p>② Motor: 200 W</p> <p>Voltage: 24 V DC</p>

TYPE
Mobile oil dispenser for 208 l drum
PART NO.
62100
DATA
<p>Description: Ideal solution when compressed air is not available. Self priming gear type pump, sintered precision gears and cast iron body with integrated adjustable by-pass valve in the pump body. Includes: oil pump, suction hose, 3m hose, digital meter, trolley for 200l drum.</p> <p>Capacity: 9 l/min free flow</p> <p>Maximum working pressure: 1,0 (10) MPa (bar)</p> <p>Motor: 600 W</p> <p>Voltage: 230 V AC</p>



S10/S15-Series



S10/S15-Series



TYPE
Oil pump kit for 208 l drum or IBC
PART NO.
62000
DATA
<p>Description: Ideal solution when compressed air is not available. Self priming gear type pump, sintered precision gears and cast iron body with integrated adjustable by-pass valve in the pump body. Includes: oil pump, suction hose, 3m hose, digital meter.</p> <p>Capacity: 9 l/min free flow</p> <p>Maximum working pressure: 1,0 (10) MPa (bar)</p> <p>Motor: 600 W</p> <p>Voltage: 230 V AC</p>

TYPE
Oil pump kit for 208 l drum or IBC
PART NO.
62001
DATA
<p>Description: Ideal solution when compressed air is not available. Self priming gear type pump, sintered precision gears and cast iron body with integrated adjustable by-pass valve in the pump body as well as a pressure switch that shuts off the pump when the outlet valve is closed. Includes: oil pump, pressure switch, suction hose, 3m hose, digital meter.</p> <p>Capacity: 9 l/min free flow</p> <p>Maximum working pressure: 1,0 (10) MPa (bar)</p> <p>Motor: 600 W</p> <p>Voltage: 230 V AC</p>

TYPE
S10 & S15 hose reels
PART NO.
<p>① 17820</p> <p>② 17837</p>
DATA
<p>Dimension: 12,5 (1/2") mm (inch)</p> <p>Maximum pressure: 7,5 (75) MPa (bar)</p> <p>① Hose length: 10 m</p> <p>Connection: 1/2" - 1/2" (F)-(M) BSP</p> <p>② Hose length: 15 m</p> <p>Connection: 1/2" - 1/2" (F)-(M) BSP</p>

TYPE
Reel kit with oil control gun
PART NO.
<p>① 317-12</p> <p>② 317-13</p>
DATA
<p>Maximum working pressure: 7,5 (75) MPa (bar)</p> <p>① Description: Includes: hose reel S10 10m (17820), strainer, ball valve, oil control valve (10377).</p> <p>② Description: Includes: hose reel S15 15m (17837), strainer, ball valve, oil control valve (10377).</p>

S10/S15-Series



S10/S15-Series



C15-Series



C15-Series



TYPE	
Reel kit with digital meter	
PART NO.	
1 317-14	3 317-14EF
2 317-15	4 317-15EF
DATA	
Maximum working pressure: 7,5 (75) MPa (bar)	
1 Description: Includes: hose reel S10 10m (17820), strainer, ball valve, oil control valve with digital meter (10372).	
2 Description: Includes: hose reel S15 15m, strainer, ball valve, oil control valve with digital meter.	
3 Description: Includes: hose reel S10, strainer, ball valve, oil control valve with approved digital meter.	
4 Description: Includes: hose reel S15, strainer, ball valve, oil control valve with approved digital meter.	

TYPE	
Reel kit with mechanical meter	
PART NO.	
1 317-20	
2 317-19	
3 317-11	
DATA	
Maximum working pressure: 7,5 (75) MPa (bar)	
1 Description: Includes: hose reel S10 10m (17820), strainer, ball valve, oil control valve with mechanical meter (16719).	
2 Description: Includes: hose reel S15 15m (17837), strainer, ball valve, oil control valve with mechanical meter (16719).	
3 Description: Includes: hose reel S15 15m (17837), strainer, ball valve, oil control valve with pre-set mechanical meter (16716).	

TYPE	
C15 hose reel	
PART NO.	
1 17844	
2 17840	
3 17843	
DATA	
Dimension: 12,5 (1/2") mm (inch)	
Maximum pressure: 7,5 (75) MPa (bar)	
1 Hose length: 15 m max (without hose)	
Connection: 1/2" - 1/2" (F)-(M) BSP	
2 Hose length: 10 m	
Connection: 1/2" - 1/2" (F)-(M) BSP	
3 Hose length: 15 m	
Connection: 1/2" - 1/2" (F)-(M) BSP	

TYPE	
Reel kit with oil control gun	
PART NO.	
1 317-01	
2 317-25	
DATA	
Maximum working pressure: 7,5 (75) MPa (bar)	
1 Description: Includes: hose reel C15 10m (17840), strainer, ball valve, oil control valve (10377).	
2 Description: Includes: hose reel C15 15m (17843), strainer, ball valve, oil control valve (10377).	

C15-Series



C15-Series



CC15-Series



CC15-Series



TYPE
Reel kit with digital meter
PART NO.
<ul style="list-style-type: none"> ❶ 317-03 ❷ 317-26
DATA
<p>Maximum working pressure: 7,5 (75) l/revolution</p> <p>❶ Description: Includes: hose reel C15 10m (17840), strainer, ball valve, oil control valve with digital meter (10372).</p> <p>❷ Description: Includes: hose reel C15 15m (17843), strainer, ball valve, oil control valve with digital meter (10372).</p>

TYPE
Reel kit with mechanical meter
PART NO.
<ul style="list-style-type: none"> ❶ 317-04 ❷ 317-27 ❸ 317-28
DATA
<p>Maximum working pressure: 7,5 (75) MPa (bar)</p> <p>❶ Description: Includes: hose reel C15 10m (17840), strainer, ball valve, oil control valve with mechanical meter (16719).</p> <p>❷ Description: Includes: hose reel C15 15m (17843), strainer, ball valve, oil control valve with mechanical meter (16719).</p> <p>❸ Description: Includes: hose reel C15 15m (17843), strainer, ball valve, oil control valve with pre-set mechanical meter (16716).</p>

TYPE
CC15 hose reel
PART NO.
<ul style="list-style-type: none"> ❶ 17852 ❷ 17853
DATA
<p>Dimension: 12,5 (1/2") mm (inch)</p> <p>Maximum pressure: 10 (100) MPa (bar)</p> <p>Connection: 1/2" - 1/2" (F)-(M) BSP</p> <p>❶ Hose length: 10 m</p> <p>❷ Hose length: 15 m</p>

TYPE
Reel kit with oil control gun
PART NO.
<ul style="list-style-type: none"> ❶ 316-12 ❷ 316-13
DATA
<p>Maximum working pressure: 7,5 (75) MPa (bar)</p> <p>❶ Description: Includes: hose reel CC15 10m (17852), strainer, ball valve, oil control valve (10377)</p> <p>❷ Description: Includes: hose reel CC15 15m (17853), strainer, ball valve, oil control valve (10377)</p>

HOSE REELS FOR OIL

HOSE REELS FOR OIL

CC15-Series



CC15-Series



T15-Series



T15-Series



TYPE
Reel kit with digital meter
PART NO.
<ul style="list-style-type: none"> 1 316-14 2 316-15
DATA
<p>Maximum working pressure: 7,5 (75) MPa (bar)</p> <p>1 Description: Includes: hose reel CC15 10m (17852), strainer, ball valve, oil control valve with digital meter (10372)</p> <p>2 Description: Includes: hose reel CC15 15m (17853), strainer, ball valve, oil control valve with digital meter (10372)</p>

TYPE
Reel kit with mechanical meter
PART NO.
<ul style="list-style-type: none"> 1 316-20 2 316-19
DATA
<p>Maximum working pressure: 7,5 (75) MPa (bar)</p> <p>1 Description: Includes: hose reel CC15 10m (17852), strainer, ball valve, oil control valve with mechanical meter (16719)</p> <p>2 Description: Includes: hose reel CC15 15m (17853), strainer, ball valve, oil control valve with mechanical meter (16719)</p>

TYPE
T15 hose reel
PART NO.
<ul style="list-style-type: none"> 1 17833 2 17832
DATA
<p>Dimension: 12,5 (1/2") mm (inch)</p> <p>Maximum pressure: 7,5 (75) MPa (bar)</p> <p>Connection: 1/2" - 1/2" (F)-(M) BSP</p> <p>1 Hose length: 15 m max (without hose)</p> <p>2 Hose length: 15 m</p>

TYPE
Reel kit with oil control gun
PART NO.
317-05
DATA
<p>Maximum working pressure: 7,5 (75) MPa (bar)</p> <p>Description: Includes: hose reel T15 15m (17832), strainer, ball valve, oil control valve (10377).</p>

HOSE REELS FOR OIL

HOSE REELS FOR OIL

T15-Series



T15-Series



T20-Series



T20-Series



TYPE
Reel kit with digital meter
PART NO.
317-06
DATA
Maximum working pressure: 7,5 (75) MPa (bar)
Description: Includes: hose reel T15 15m (17832), strainer, ball valve, oil control valve with digital meter (10372).

TYPE
Reel kit with mechanical meter
PART NO.
<ul style="list-style-type: none"> ❶ 317-07 ❷ 317-08
DATA
Maximum working pressure: 7,5 (75) MPa (bar)
<ul style="list-style-type: none"> ❶ Description: Includes: hose reel T15 15m (17832), strainer, ball valve, oil control valve with mechanical meter (16719). ❷ Description: Includes: hose reel T15 15m (17832), strainer, ball valve, oil control valve with pre-set mechanical meter (16716).

TYPE
T20 hose reel
PART NO.
<ul style="list-style-type: none"> ❶ 37845 ❷ 17834 ❸ 17836
DATA
Dimension: 12,5 (1/2") mm (inch)
❶ Hose length: 20 m max (without hose)
Connection: 1/2" - 1/2" (F)-(M) BSP
❷ Hose length: 20 m
Connection: 1/2" - 1/2" (F)-(M) BSP
❸ Hose length: 15 m
Connection: 3/4" -3/4" (F)-(M) BSP

TYPE
Reel kit with oil gun
PART NO.
317-21
DATA
Maximum working pressure: 7,5 (75) MPa (bar)
Description: Includes: hose reel T20 20m 1/2" (17834), strainer, ball valve, oil control valve (10377).

T20-Series



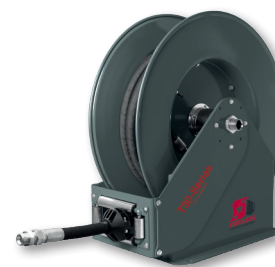
T20-Series



T30-Series



T30-Series



TYPE
Reel kit with with H.V. oil gun
PART NO.
317-22
DATA
<p>Maximum working pressure: 7,5 (75) MPa (bar)</p> <p>Description: Includes: hose reel T20 15m 3/4" (17836), strainer, ball valve, H.V oil control valve (16724).</p>

TYPE
Reel kit with meter
PART NO.
<p>① 317-23</p> <p>② 317-09</p> <p>③ 317-10</p>
DATA
<p>Maximum working pressure: 7,5 (75) MPa (bar)</p> <p>① Description: Includes: hose reel T20 20m (17834), strainer, ball valve, H.V oil control valve with digital meter (16813).</p> <p>② Description: Includes: hose reel T20 20m (17834), strainer, ball valve, oil control valve with mechanical meter (16719).</p> <p>③ Description: Includes: hose reel T20 20m (17834), strainer, ball valve, oil control valve with pre-set mechanical meter (16716).</p>

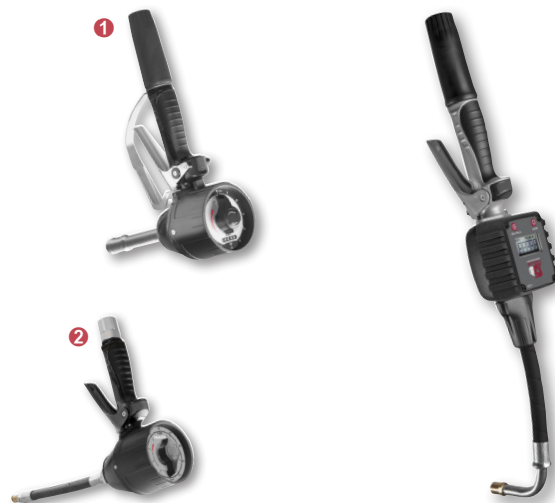
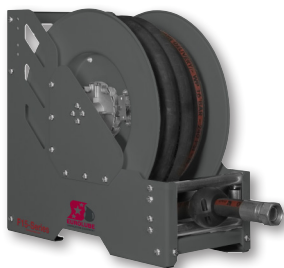
TYPE
T30-series
PART NO.
<p>① 17878</p> <p>② 17879</p> <p>③ 17880</p>
DATA
<p>Dimension: 19 (3/4") mm (inch)</p> <p>Maximum pressure: 7,5 (75) MPa (bar)</p> <p>① Hose length: 30 m max (without hose)</p> <p>Connection: 3/4" - 1" (M)-(M) BSP</p> <p>② Hose length: 30 m max (without hose)</p> <p>Connection: 1" - 1" (M)-(M) BSP</p> <p>③ Hose length: 30 m</p> <p>Connection: 1/2" - 1/2" (M)-(M) BSP</p>

TYPE
T30-series
PART NO.
17881
DATA
<p>Media: Oil/Diesel</p> <p>Dimension: 19 (3/4") mm (inch)</p> <p>Maximum pressure: 7,5 (75) MPa (bar)</p> <p>Hose length: 25 m</p> <p>Connection: 3/4" - 3/4" (F)-(M) BSP</p>

T30-Series



F15-Series



TYPE
T30-series
PART NO.
17882
DATA
Media: Oil/Diesel
Dimension: 25,4 (1") mm (inch)
Maximum pressure: 7,5 (75) MPa (bar)
Hose length: 15 m
Connection: 1" - 1" (F)-(M) BSP

TYPE
F15-series
PART NO.
17885
DATA
Media: Oil/Diesel
Dimension: 38,1 (1 1/2") mm (inch)
Maximum pressure: 2,0 (20) MPa (bar)
Hose length: 15 m
Connection: 1 1/2" - 1 1/2" (M)-(M) BSP

TYPE
Mechanical hose end meter
PART NO.
1 16716
2 16719
DATA
Maximum working pressure: 7,0 (70) MPa (bar)
Accuracy: 0,65 % ±
Pre-set: 0,25 - 60 l
Connection: 1/2" (F) BSP
1 Model: Pre-set mechanical meter for oil 1/2" (F) BSP
Capacity: 20 l/min free flow
2 Model: Mechanical hand meter for oil 1/2" (F) BSP
Capacity: 30 l/min free flow

TYPE
Hose end meter
PART NO.
10371
DATA
Model: Digital hand meter 90° hose auto- matic non-drip
Capacity: 30 l/min free flow
Maximum working pressure: 10,0 (100) MPa (bar)
Accuracy: 0,5 % ±
Connection: 1/2" (F) BSP

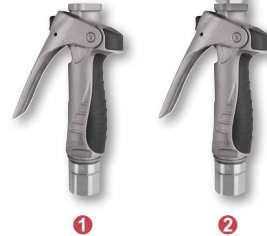


TYPE
Hose end meter
PART NO.
<p>1 10372</p> <p>2 10391</p>
DATA
<p>Capacity: 30 l/min free flow</p> <p>Maximum working pressure: 10,0 (100) MPa (bar)</p> <p>Accuracy: 0,5 % ±</p> <p>Connection: 1/2" (F) BSP</p> <p>1 Model: Digital hand meter 90° hose manual non-drip</p> <p>2 Model: Digital hand meter 135° hose automatic non-drip</p>

TYPE
Pre-set hose end meter
PART NO.
<p>1 10422 4 10472</p> <p>2 10452 5 10491</p> <p>3 10471</p>
DATA
<p>Media: Oil/Glycol</p> <p>Capacity: 0,8-30 l/min free flow</p> <p>Maximum working pressure: 10,0 (100) MPa (bar)</p> <p>Connection: 1/2" (F) BSP</p> <p>1 Model: Pre-set digital hand meter with adjustable outlet hose</p> <p>2 Model: Pre-set digital hand meter 60° outlet pipe and manual non-drip</p> <p>3 Model: Pre-set digital hand meter 90° outlet hose and automatic non-drip</p> <p>4 Model: Pre-set digital hand meter 90° outlet hose and manual non-drip</p> <p>5 Model: Pre-set digital hand meter 135° outlet hose and automatic non-drip</p>

TYPE
H.V. Hose end meter
PART NO.
<p>1 16813</p> <p>2 16818</p>
DATA
<p>Capacity: 70 l/min free flow</p> <p>Maximum working pressure: 10 (100) MPa (bar)</p> <p>Accuracy: 0,5 % ±</p> <p>1 Model: High volume electronic meter for oil, 60° outlet tube with manual non-drip nozzle 3/4" (F) BSP</p> <p>2 Model: High volume electronic meter for oil, outlet hose with manual non-drip nozzle 3/4" (F) BSP</p>

TYPE
In-line meter
PART NO.
1168817
DATA
<p>Capacity: 30 l/min free flow</p> <p>Maximum working pressure: 10,0 (100) MPa (bar)</p> <p>Voltage: 2x AAA 1,5 V DC</p> <p>Accuracy: 0,5 % ±</p> <p>Connection: 1/2" (F)-(F) BSP</p>



TYPE
In-line meter
PART NO.
1168820
DATA
Capacity: 80 l/min free flow
Maximum pressure: 7 (70) MPa (bar)
Voltage: 2x AAA 1,5 V DC
Accuracy: 0,5 % ±
Connection: 3/4" (F)-(F) BSP

TYPE
Oil control gun w/ sight glass
PART NO.
10336EF
DATA
Capacity: 40 l/min free flow
Maximum working pressure: 10 (100) MPa (bar)
Connection: 1/2" (F) BSP

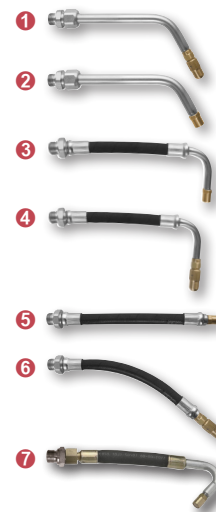
TYPE
Oil control gun
PART NO.
1 10305
2 10336
DATA
Capacity: 40 l/min free flow
Outlet: 1/2" (F) BSP
Maximum working pressure: 10,0 (100) MPa (bar)
Connection: 1/2" (F) BSP
1 Model: Oil control gun without outlet
2 Model: Oil control valve with 60° pipe, automatic non-drip

TYPE
Oil control gun
PART NO.
1 10377
2 10376
3 10396
DATA
Capacity: 40 l/min free flow
Maximum working pressure: 10,0 (100) MPa (bar)
Connection: 1/2 (F) BSP
1 Model: Oil control gun with 90° flexible outlet, manual non-drip
2 Model: Oil control valve 90° automatic non-drip
3 Model: Oil control gun, 135° flexible outlet with automatic non-drip nozzle

OIL METERS AND GUNS



OIL METERS AND GUNS



TYPE
H.V. Control gun
PART NO.
<p>1 16724</p> <p>2 16721</p>
DATA
<p>Capacity: 70 l/min free flow</p> <p>Maximum working pressure: 10 (100) MPa (bar)</p> <p>Connection: 3/4" (F) BSP</p> <p>1 Model: High volume oil control gun with 45° pipe, manual non-drip</p> <p>2 Model: High volume oil control gun with flexible outlet, manual non-drip</p>

TYPE
Oil bar
PART NO.
<p>1 16755</p> <p>2 16703</p> <p>3 16708</p>
DATA
<p>Connection: 1/2" (F) BSP</p> <p>1 Model: Oil bar with one valve</p> <p>2 Model: Outlet valve for oil bar 16755</p> <p>3 Model: Oil bar valve stainless steel</p>

TYPE
Nozzles
PART NO.
<p>1 1167431 3 1169340</p> <p>2 1169350 4 1169360</p>
DATA
<p>1 Model: Automatic non-drip nozzle M12x1 mm</p> <p>2 Model: Automatic non-drip nozzle 1/4" (F) BSP</p> <p>3 Model: Non-drip nozzle manual 1/4" (F) BSP</p> <p>4 Model: Colour coded protectors for outlet hoses, kit of 4</p>

TYPE
Outlet hose with non-drip nozzle
PART NO.
<p>1 1168683 5 1168595</p> <p>2 1167744 6 1168686</p> <p>3 1168684 7 1167783</p> <p>4 1168591</p>
DATA
<p>Connection: 1/2" (M) BSP</p> <p>1 Model: Rigid outlet 60° with manual non-drip</p> <p>2 Model: Outlet tube 60° with automatic non-drip</p> <p>3 Model: Outlet hose 90° with automatic non-drip</p> <p>4 Model: Outlet hose 90° with manual non-drip</p> <p>5 Model: Outlet hose straight with automatic non-drip</p> <p>6 Model: Outlet hose formable with manual non-drip nozzle</p> <p>7 Model: Outlet hose 135° with automatic non-drip</p>



TYPE
Drum pump with telescopic suction tube
PART NO.
10720
DATA
<p>Description: Hand operated pump for oil and diesel. Telescopic pump tube and 2" drum adaptor included. Do not use with flammable or corrosive fluids.</p> <p>Capacity: 0,45 l/stroke</p> <p>For container: 60-208 l</p>

TYPE
Drum pump with outlet hose and spout 60-208 l
PART NO.
<p>① 16780</p> <p>② 16789</p>
DATA
<p>Capacity: 0,1 l/stroke</p> <p>① Description: Hand operated pump for gear oil. 2" drum adaptor, 1,5m outlet hose with ball valve and 135° spout included. Do not use with flammable or corrosive fluids.</p> <p>For container: 208 l</p> <p>② Description: Hand operated pump for gear oil. 2" drum adaptor, 1,5m outlet hose with ball valve and 135° spout included. Do not use with flammable or corrosive fluids.</p> <p>For container: 60 l</p>

TYPE
Drum pump 60-208 l
PART NO.
11645
DATA
<p>Description: Hand operated pump for oil and diesel. Telescopic pump tube and 2" drum adaptor included. Do not use with flammable or corrosive fluids.</p> <p>Capacity: 0,5 l/stroke</p> <p>Pump tube: 350 - 980 mm</p>

TYPE
Hand operated pumps
PART NO.
10730
DATA
<p>Description: Sturdy model for oil and diesel, telescopic pump tube and 2" drum adaptor included. Do not use with flammable or corrosive fluids.</p> <p>Capacity: 0,3 l/revolution</p>

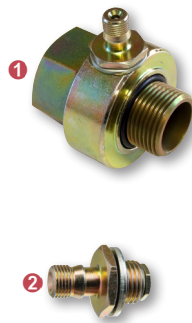


TYPE
Mobile oil dispenser
PART NO.
137-37
DATA
<p>Description: For filling up gear oil or topping oil levels. Equipped with hand operated pump and 1.5 m outlet hose c.w. ball valve. Do not use with flammable or corrosive fluids.</p> <p>Capacity: 0,1 l/stroke</p> <p>Volume: 25 l</p>

TYPE
Pressurized oil dispenser
PART NO.
137-36
DATA
<p>Description: Air-operated gear oil dispensers for filling or topping up oil levels. Equipped with 1.5m outlet hose and oil gun. Do not use with flammable or corrosive fluids.</p> <p>Maximum air pressure: 0,3 (3,0) - 0,7 (7,0) MPa (bar)</p> <p>Volume: 25 l</p>

TYPE
Pressurized oil dispenser with digital meter
PART NO.
137-38
DATA
<p>Description: Air-operated gear oil dispensers for filling or topping up oil levels. Equipped with 1.5m outlet hose and oil gun with digital meter. Do not use with flammable or corrosive fluids.</p> <p>Maximum air pressure: 0,3 (3,0) - 0,7 (7,0) MPa (bar)</p> <p>Volume: 25 l</p> <p>Meter: 10300</p>

TYPE
Portable oil dispenser
PART NO.
137-35
DATA
<p>Description: Equipped with hand operated pump and 1.5 m outlet hose c.w. ball valve. Do not use with flammable or corrosive fluids.</p> <p>Capacity: 0,1 l/stroke</p> <p>Volume: 17 l</p>

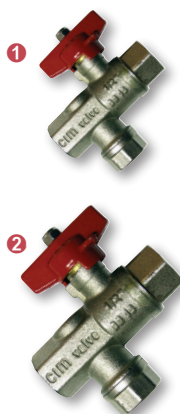
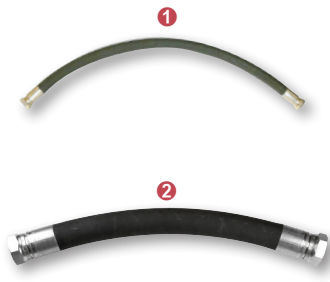


TYPE
Oil suction gun
PART NO.
10710
DATA
Description: Do not use with flammable or corrosive fluids. Capacity: 0,5 l/stroke Hose length: 290 mm

TYPE
Pressure relief valve kit
PART NO.
① 16764 ② 16765-60
DATA
① Outlet: 1/8" (M) BSP Connection: 3/4" (F)-(M) BSP ② Outlet: 1/8" (M) BSP Connection: 1/4" (M) BSP

TYPE
Suction tube for drums and tanks
PART NO.
① 16750 ② 16751
DATA
① Hose length: 2 m Riser tube length: 1040 mm Connection: 3/4" - 1" (F)-(M) BSP ② Hose length: 2 m Riser tube length: 1600 mm Connection: 3/4" - 1" (F)-(M) BSP

TYPE
Suction tubes
PART NO.
① 16753 ② 16754
DATA
Material: Steel Connection: 3/4" (M) BSP ① Length: 600-1085 mm ② Length: 1062-2012 mm

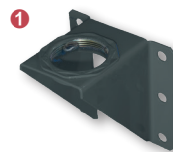
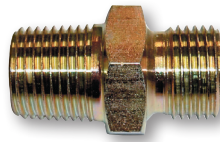
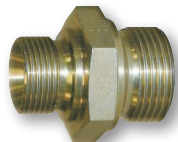


TYPE	
Outlet hoses	
PART NO.	
1 16740	4 16743
2 16741	5 16744
3 16742	6 16745
DATA	
Dimension: 12,5 (1/2") mm (inch)	
Thread: 1/2" - 1/2" (F)-(F) BSP	
Adaptor: 3/4" - 1/2" (M)-(M) BSP	
1 Hose length: 2 m	
2 Hose length: 3 m	
3 Hose length: 4 m	
4 Hose length: 5 m	
5 Hose length: 6 m	
6 Hose length: 8 m	

TYPE	
Connection hoses	
PART NO.	
1 16735	
2 16737	
3 16747	
DATA	
1 Dimension: 25,4 (1") mm (inch)	
Thread: 1" - 1" (F)-(M) BSP	
Hose length: 1 m	
2 Dimension: 19 (3/4") mm (inch)	
Thread: 3/4" - 3/4" (F)-(F) BSP	
Hose length: 1,5 m	
3 Dimension: 50,8 (2") mm (inch)	
Thread: 2" - 2" (F)-(F) BSP	
Hose length: 0,7 m	

TYPE	
Oil filter with ball valve	
PART NO.	
1 16710-50	
2 16711-50	
DATA	
Maximum working pressure: 5,0 (50) MPa (bar)	
1 Connection: 1/2" (F) BSP	
2 Connection: 3/4" (F) BSP	

TYPE	
Ball valves for oil / air / water	
PART NO.	
1 1887257	4 1367258
2 1887260	5 1367259
3 1367262	
DATA	
1 Maximum working pressure: 2,5 (25) MPa (bar)	
Connection: 1/4" (F) BSP	
2 Maximum working pressure: 6,4 (64) MPa (bar)	
Connection: 3/8" (F) BSP	
3 Maximum working pressure: 5,0 (50) MPa (bar)	
Connection: 1/2" (F) BSP	
4 Maximum working pressure: 5,0 (50) MPa (bar)	
Connection: 3/4" (F) BSP	
5 Maximum working pressure: 5,0 (50) MPa (bar)	
Connection: 1" (F) BSP	

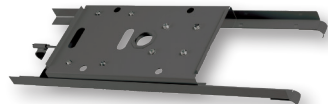
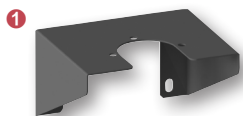


TYPE	
Bonded seals	
PART NO.	
1 1367264	4 1367422
2 1367265	5 1367266
3 1367347	
DATA	
1 Dimension:	1/4"
2 Dimension:	3/8"
3 Dimension:	1/2"
4 Dimension:	3/4"
5 Dimension:	1"

TYPE	
Straight adapters	
PART NO.	
1 1367267	5 1367268
2 1367271	6 1367270
3 1317181	7 1367269
4 1317180	
DATA	
1 Thread:	1/4" - 1/4" (M)-(M) BSP
2 Thread:	3/8" - 3/8" (M)-(M) BSP
3 Thread:	1/2"-1/2" (M)-(M) BSP
4 Thread:	3/4"-1/2" (M)-(M) BSP
5 Thread:	3/4" - 3/4" (M)-(M) BSP
6 Thread:	1" - 3/4" (M)-(M) BSP
7 Thread:	1" - 1" (M)-(M) BSP

TYPE	
Tapered adapters	
PART NO.	
1 1367587	
2 1357676	
3 1367594	
DATA	
1 Thread:	1/4" - 1/4" (M)-(M) BSP - BSPT
2 Thread:	3/8" - 3/8" (M)-(M) BSP - BSPT
3 Thread:	1/2" - 1/2" (M)-(M) BSP - BSPT

TYPE	
Pump brackets	
PART NO.	
1 16730	
2 16733	
DATA	
1 Connection:	2" (F) BSP
2 Connection:	2" (F) BSP

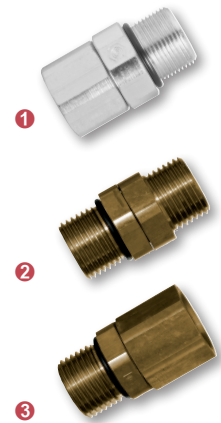
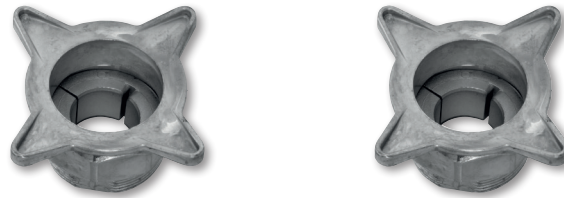


TYPE
Bracket for H.D. pumps
PART NO.
<ul style="list-style-type: none"> 1 16705 2 16709
DATA
<p>1 Description: For installation of wall mounted air operated HD pumps.</p> <p>2 Description: For installation of air operated HD pumps.</p>

TYPE
IBC pump and reel bracket
PART NO.
1069237
DATA
<p>Description: Bracket for installation of our air operated pumps and hose reels on an IBC tank. Fits our Reels: S10, S15, CC15, C15 and T15.</p> <p>Connection: 2" (F) BSP</p>

TYPE
Bracket with carrying handle for electric pumps
PART NO.
16749
DATA
<p>Description: For electrical pumps</p>

TYPE
Drip holster
PART NO.
<ul style="list-style-type: none"> 1 16781 2 16782
DATA
<p>1 Description: Wall mounted drip pockets for hose end meters and oil guns. Bleeder valve included.</p> <p>2 Description: Wall mounted drip pocket for hose end meters and oil guns, removable drip tray.</p>



TYPE
Drum adapters various containers
PART NO.
<p>1 0925-400</p> <p>2 0925-026</p>
DATA
<p>1 Model: Bung adaptor Mauser G2"(f)</p> <p>2 Model: Bung adaptor Trisure G2"(f)</p>

TYPE
Drum adapters 26-38 mm
PART NO.
<p>1 1117701 5 1117705</p> <p>2 1117704 6 1117178</p> <p>3 1117718 7 1118436</p> <p>4 1137123 8 1117707</p>
DATA
<p>Connection: 2" (M) BSP</p> <p>1 Dimension: Ø26 mm</p> <p>2 Dimension: Ø28 mm</p> <p>3 Dimension: Ø30 mm</p> <p>4 Dimension: Ø32 mm</p> <p>5 Dimension: Ø34 mm</p> <p>6 Dimension: Ø35 mm</p> <p>7 Dimension: Ø36 mm</p> <p>8 Dimension: Ø38 mm</p>

TYPE
Drum adapter 40-54 mm
PART NO.
<p>1 1157234 4 1155153</p> <p>2 1117610 5 1117277</p> <p>3 1117065</p>
DATA
<p>Connection: 2" (M) BSP</p> <p>1 Dimension: Ø40 mm</p> <p>2 Dimension: Ø42 mm</p> <p>3 Dimension: Ø50 mm</p> <p>4 Dimension: Ø52 mm</p> <p>5 Dimension: Ø54 mm</p>

TYPE
Swivel for oil
PART NO.
<p>1 1568507</p> <p>2 3368519</p> <p>3 3368520</p>
DATA
<p>1 Thread: 1/2 - 1/2" (F)-(M) BSP</p> <p>2 Thread: 1/2" - 1/2" (M)-(M) BSP</p> <p>3 Thread: 1/2" - 1/2" (F)-(M) BSP</p>

NOTES

A large rectangular area with a thin black border, containing numerous horizontal dotted lines for writing notes.

Grease equipment

Air operated grease pumps	52
Grease pump kits	57
Hose reels for grease	61
Equipment for grease	62
Battery operated grease guns	63
Grease control valves and accessories	63
Drum covers and accessories	64
Grease fittings	67



C70-Series



E80-Series



E80-Series



TYPE
55:1 Pump for 18-180 kg drum
PART NO.
<ul style="list-style-type: none"> 1 25765 2 25766 3 25767
DATA
<p>Ratio: 55:1</p> <p>Capacity: 540 gr/min</p> <p>Air connection: 1/4" (F) BSPT</p> <p>Maximum air pressure: 1,0 (10) MPa (bar)</p> <p>Outlet: 1/4" (F) BSPT</p> <p>Seals: NBR / PTFE</p> <ul style="list-style-type: none"> 1 Pump tube: 26 (920) Ø (length) mm 2 Pump tube: 26 (725) Ø (length) mm 3 Pump tube: 26 (510) Ø (length) mm

TYPE
60:1 Pump for 18-180 kg drum
PART NO.
<ul style="list-style-type: none"> 1 25735 2 25736 3 25737
DATA
<p>Ratio: 60:1</p> <p>Capacity: 1100 gr/min</p> <p>Air connection: 1/4" (F) BSPT</p> <p>Maximum air pressure: 1,0 (10) MPa (bar)</p> <p>Outlet: 3/8" (F) BSPT</p> <p>Seals: PU / PTFE</p> <ul style="list-style-type: none"> 1 Pump tube: 30 (930) Ø (length) mm 2 Pump tube: 30 (750) Ø (length) mm 3 Pump tube: 30 (450) Ø (length) mm

TYPE
80:1 Pump for 18-180 kg drum
PART NO.
<ul style="list-style-type: none"> 1 25795 2 25796 3 25794
DATA
<p>Ratio: 80:1</p> <p>Capacity: 1100 gr/min</p> <p>Air connection: 1/4" (F) BSPT</p> <p>Maximum air pressure: 1,0 (10) MPa (bar)</p> <p>Outlet: 3/8" (F) BSPT</p> <p>Seals: PU / NBR</p> <ul style="list-style-type: none"> 1 Pump tube: 30 (940) Ø (length) mm 2 Pump tube: 30 (760) Ø (length) mm 3 Pump tube: 30 (460) Ø (length) mm

TYPE
Inlet filter
PART NO.
2150210
DATA
<p>Description: Fits the following pumps:</p> <ul style="list-style-type: none"> • 25735, -36, -37 and • 25794, -95, -96

AIR OPERATED GREASE PUMPS

AIR OPERATED GREASE PUMPS

C115-Series



C115-Series



C115-Series



C150-Series



TYPE
40:1 HD Pump for 50-180 kg drum
PART NO.
① 25745 ② 25746
DATA
Ratio: 40:1 Capacity: 11 kg/min Air connection: 1/2" (F) BSP Maximum air pressure: 1,4 (14) MPa (bar) Outlet: 1/2" (F) BSP Seals: PE / PTFE / NBR ① Pump tube: 50 (855) Ø (length) mm ② Pump tube: 50 (650) Ø (length) mm

TYPE
70:1 HD Pump for 50-180 kg drum
PART NO.
① 25730 ② 25731
DATA
Ratio: 70:1 Capacity: 7,5 kg/min Air connection: 1/2" (F) BSP Maximum air pressure: 1,4 (14) MPa (bar) Outlet: 1/2" (F) BSP Seals: PE / PTFE / NBR ① Pump tube: 50 (855) Ø (length) mm ② Pump tube: 50 (650) Ø (length) mm

TYPE
70:1 HD Pump for bulk tank
PART NO.
25732
DATA
Ratio: 70:1 Capacity: 7,5 kg/min Air connection: 1/2" (F) BSP Maximum air pressure: 1,4 (14) MPa (bar) Outlet: 1/2" (F) BSP Pump tube: 50 (490) Ø (length) mm Seals: PE / PTFE / NBR

TYPE
80:1 HD Pump for 50-180 kg drum
PART NO.
① 25787 ② 25788
DATA
Ratio: 80:1 Capacity: 8 kg/min Air connection: 1/2" (F) BSP Maximum air pressure: 1,4 (14) MPa (bar) Outlet: 1/2" (F) BSP Seals: PE / PTFE / NBR ① Pump tube: 50 (855) Ø (length) mm ② Pump tube: 50 (650) Ø (length) mm

E80-Series



C115-Series



C150-Series

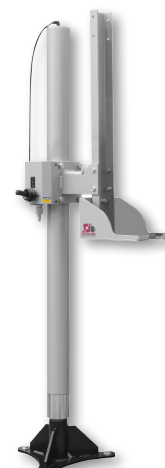


TYPE
15:1 Transfer pump for 18-180 kg drum
PART NO.
1 15740 2 15741
DATA
Ratio: 15:1
Capacity: 15 l/min free flow
Air connection: 1/4" (F) BSP
Maximum air pressure: 1,0 (10) MPa (bar)
Outlet: 3/4" (F) BSP
Seals: PU / NBR
1 Pump tube: 50 (910) Ø (length) mm
2 Pump tube: 32 (235) Ø (length) mm

TYPE
25:1 Transfer pump for 180 kg drum
PART NO.
25725
DATA
Ratio: 25:1
Capacity: 16 kg/min
Air connection: 1/2" (F) BSP
Maximum air pressure: 1,4 (14) MPa (bar)
Outlet: 1/2" (F) BSP
Pump tube: 70 (855) Ø (length) mm
Seals: PE / PTFE / NBR

TYPE
12:1 Transfer pump for bulk tank
PART NO.
25720
DATA
Ratio: 12:1
Capacity: 40 kg/min
Air connection: 1/2" (F) BSP
Maximum air pressure: 1,4 (14) MPa (bar)
Outlet: 1" (F) BSP
Pump tube: 70 (226) Ø (length) mm
Seals: PE / PU / NBR / PTFE

TYPE
Cam-Lock adapters
PART NO.
1 2357404 2 2357405
DATA
1 Description: Allow to fit a pump horizontally or vertically to grease bags, totes and other type of containers. Fixes to a C115- or C150-series pump body. Standard 3" male cam-lock connection.
2 Description: Allow to fit a pump horizontally or vertically to grease bags, totes and other type of containers. Standard 3" female cam-lock connection.



TYPE
Mobile grease pump hoist for 12-20 kg
PART NO.
26746
DATA
<p>Description: Mobile unit designed for use with hard to pump, sticky and high viscosity greases up to NLGI3. A pneumatic piston elevates the pump for replacing an empty pail. The pneumatic piston also pushes down when the pump is in use.</p> <p>It is ideal for situations where it is important to get all the grease out of the bucket. Applications include expensive grease where complete emptying is essential, dented buckets/drums that cause the follower lid to stick, and easy handling of the grease to avoid debris that can damage the pump or machine. Delivered without pump.</p>

TYPE
Grease pump and hoist
PART NO.
26742
DATA
<p>Ratio: 60:1</p> <p>Pump: 25737</p> <p>Description: Mobile unit designed for use with hard to pump, sticky and high viscosity greases up to NLGI3. A pneumatic piston elevates the pump for replacing an empty pail. The pneumatic piston also pushes down when the pump is in use.</p> <p>It is ideal for situations where it is important to get all the grease out of the bucket. Applications include expensive grease where complete emptying is essential, dented buckets/drums that cause the follower lid to stick, and easy handling of the grease to avoid debris that can damage the pump or machine.</p>

TYPE
Pump hoist for lifting eye
PART NO.
26741
DATA
<p>Height: 1630 - 2630 mm</p> <p>Description: Lifts and lowers pumps, making drum changes easier, faster and more efficient. Swings 360° around it's own axis, serving up to three pumps / barrels. Air operated.</p>

TYPE
Pump hoist
PART NO.
26705
DATA
<p>Height: 1630 - 2630 mm</p> <p>Description: The Eurolube Pump Hoist offers better performance, ease of use and safe handling. Compact and robust design. The lift can be rotated, this feature allows 3 grease drums to be in position for quick change to a new grease drum. Robust lever valve for UP/DOWN control of the lift.</p>



TYPE
Single post pump hoist 40:1
PART NO.
257-55
DATA
<p>Maximum air pressure: 1,4 (14) MPa (bar)</p> <p>Pump: 25745</p> <p>Description: Offers better performance, easy use and safe handling.</p> <p>Robust follower plate 550-590mm with rubber blade wiper to ensure positive sealing of greases. Compact and robust design. the lift can be rotated, this feature makes it possible to have 3 grease drums in position, for a quick change to a new grease drum. Robust lever valve for UP/DOWN control of the hoist.</p>

TYPE
Single post pump hoist 70:1
PART NO.
257-56
DATA
<p>Maximum air pressure: 1,4 (14) MPa (bar)</p> <p>Pump: 25730</p> <p>Description: Offers better performance, easy use and safe handling.</p> <p>Robust follower plate 550-590mm with rubber blade wiper to ensure positive sealing of greases. Compact and robust design. the lift can be rotated, this feature makes it possible to have 3 grease drums in position, for a quick change to a new grease drum. Robust lever valve for UP/DOWN control of the hoist.</p>

TYPE
Power Ram pump hoist 40:1
PART NO.
257-51
DATA
<p>Description: The power Ram pump hoists offer better performance, easy use and safe handling, powered by Ø80mm twin-post pressure primers. Robust one-piece aluminium follower plate with twin rubber blade wipers to ensure positive sealing of high-viscosity greases. built in automatic low level shut of valve, that prevents dry pumping and protect the pump. pivotable air control box, with two air regulators, one for pump control and one for hoist control. ON/OFF push button for pump control. Robust lever valve for UP/DOWN control of the hoist. Includes: pump, pump hoist, quick coupling, filter regulator, air line hose, grease hose, follower plate.</p> <p>Capacity: 11000 gr/min</p> <p>Air connection: 1/2" (F) BSP</p> <p>Pump: 25746</p>

TYPE
Power Ram pump hoist 70:1
PART NO.
257-52
DATA
<p>Description: The power Ram pump hoists offer better performance, easy use and safe handling, powered by Ø80mm twin-post pressure primers. Robust one-piece aluminium follower plate with twin rubber blade wipers to ensure positive sealing of high-viscosity greases. built in automatic low level shut of valve, that prevents dry pumping and protect the pump. pivotable air control box, with two air regulators, one for pump control and one for hoist control. ON/OFF push button for pump control. Robust lever valve for UP/DOWN control of the hoist. Includes: pump, pump hoist, quick coupling, filter regulator, air line hose, grease hose, follower plate.</p> <p>Capacity: 7500 gr/min</p> <p>Air connection: 1/2" (F) BSP</p> <p>Pump: 25731</p>



TYPE
Power Ram hoist without pump
PART NO.
26700
DATA
<p>Description: The Power Ram pump hoist ensures enhanced performance, user-friendly operation, and safety. It features twin Ø80mm cylinders for efficient grease input and a durable aluminium follower plate with dual sealing lips, maintaining cleanliness while handling high-viscosity greases. The standard automatic low-level stop prevents dry pumping, safeguarding the pump. Its swivelling control unit includes built-in regulators—one for pump control and another for hoist control—with ON/OFF buttons for pump operation and a sturdy lever valve for hoist movement.</p>

TYPE
Pump kit for 185 kg drums
PART NO.
<p>① 257-32 ② 257-32FP</p>
DATA
<p>Maximum air pressure: 1,0 (10) MPa (bar)</p> <p>① Description: Grease pump kits designed to meet any needs of greasing, based on our high performance grease pumps. Includes: 60:1 pump 25735, quick coupler, filter regulator, air line hose 1/4" x 1,5m, grease hose 3/8" x 2m, drum cover, ball valve, nipples.</p> <p>For container: 180 kg</p> <p>② Description: Grease pump kits designed to meet any needs of greasing, based on our high performance grease pumps. Includes: 60:1 pump 25735, quick coupler, filter regulator, air line hose 1/4"x1,5m, grease hose 3/8"x2m, drum cover, follower plate, ball valve, nipples.</p> <p>For container: 180 kg</p>

TYPE
Pump kit for 50 kg drums
PART NO.
<p>① 257-31 ② 257-31FP</p>
DATA
<p>Maximum air pressure: 1,0 (10) MPa (bar)</p> <p>① Description: Grease pump kits designed to meet any needs of greasing, based on our high performance grease pumps. Includes: 60:1 pump 25736, quick coupler, filter regulator, air line hose 1/4"x1,5m, grease hose 3/8" x 2m, drum cover, ball valve, nipples.</p> <p>For container: 50-60 kg</p> <p>② Description: Grease pump kits designed to meet any needs of greasing, based on our high performance grease pumps. Includes: 60:1 pump 25736, quick coupler, filter regulator, air line hose 1/4" x 1,5m, grease hose 3/8" x 2m, drum cover, follower plate, ball valve, nipples.</p> <p>For container: 50-60 kg</p>

TYPE
Mobile greaser 185 kg
PART NO.
<p>① 257-39 ② 257-39FP</p>
DATA
<p>Maximum air pressure: 1,0 (10) MPa (bar)</p> <p>① Description: Grease pump kits designed to meet any needs of greasing, based on our high performance grease pumps. Includes: 55:1 pump, grease gun, z-swivel, grease hose 3/8" x 4 m, trolley, drum cover.</p> <p>② Description: Grease pump kits designed to meet any needs of greasing, based on our high performance grease pumps. Includes: 55:1 pump, grease gun, z-swivel, grease hose 3/8" x 4m, trolley, drum cover, follower plate.</p>



TYPE
Mobile greaser 185 kg
PART NO.
<ul style="list-style-type: none"> 1 257-40 2 257-40FP
DATA
<p>Maximum air pressure: 1,0 (10) MPa (bar)</p> <p>1 Description: Grease pump kits designed to meet any needs of greasing, based on our high performance grease pumps. Includes: 55:1 pump, grease gun, z-swivel, hose Reel S15, H.D. trolley, drum cover.</p> <p>2 Description: Grease pump kits designed to meet any needs of greasing, based on our high performance grease pumps. Includes: 55:1 pump, grease gun, z-swivel, hose Reel S15, H.D. trolley, drum cover, follower plate.</p>

TYPE
Deluxe greaser 50 kg
PART NO.
<ul style="list-style-type: none"> 1 257-35 2 257-35FP
DATA
<p>Maximum air pressure: 1,0 (10) MPa (bar)</p> <p>1 Description: Grease pump kits designed to meet any needs of greasing, based on our high performance grease pumps. Includes: 55:1 pump, grease gun, z-swivel, grease hose 3/8" x 2m, Deluxe trolley.</p> <p>2 Description: Grease pump kits designed to meet any needs of greasing, based on our high performance grease pumps. Includes: 55:1 pump, grease gun, z-swivel, grease hose 3/8" x 2m, Deluxe trolley, follower plate.</p>

TYPE
Mobile greaser 50 kg
PART NO.
<ul style="list-style-type: none"> 1 257-33 2 257-33FP
DATA
<p>Maximum air pressure: 1,0 (10) MPa (bar)</p> <p>1 Description: Grease pump kits designed to meet any needs of greasing, based on our high performance grease pumps. Includes: 55:1 pump, grease gun, z-swivel, grease hose 3/8" x 2m, handle, drum cover.</p> <p>2 Description: Grease pump kits designed to meet any needs of greasing, based on our high performance grease pumps. Includes: 55:1 pump, grease gun, z-swivel, grease hose 3/8" x 2m, handle, drum cover, follower plate.</p>

TYPE
Deluxe greaser 20 kg
PART NO.
<ul style="list-style-type: none"> 1 257-34 2 257-34FP
DATA
<p>Maximum air pressure: 1,0 (10) MPa (bar)</p> <p>1 Description: Grease pump kits designed to meet any needs of greasing, based on our high performance grease pumps. Includes: 55:1 pump, grease gun, z-swivel, grease hose 3/8" x 2m, handle, Deluxe trolley.</p> <p>2 Description: Grease pump kits designed to meet any needs of greasing, based on our high performance grease pumps. Includes: 55:1 pump, grease gun, z-swivel, grease hose 3/8" x 2m, handle, follower plate, Deluxe trolley.</p>

GREASE PUMP KITS

GREASE PUMP KITS

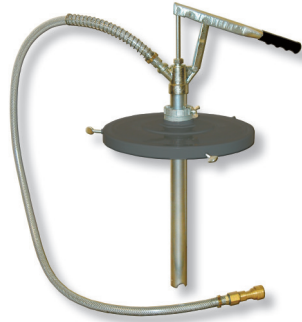


TYPE
Mobile greaser 20 kg
PART NO.
<ul style="list-style-type: none"> 1 257-37 2 257-37FP
DATA
<p>Maximum air pressure: 1,0 (10) MPa (bar)</p> <p>1 Description: Grease pump kits designed to meet any needs of greasing, based on our high performance grease pumps. Includes: 55:1 pump, grease gun, z-swivel, grease hose 3/8" x 2m, handle, drum cover, trolley.</p> <p>2 Description: Grease pump kits designed to meet any needs of greasing, based on our high performance grease pumps. Includes: 55:1 pump, grease gun, z-swivel, grease hose 3/8" x 2m, handle, drum cover, follower plate, trolley.</p>

TYPE
Portable greaser 15-20 kg
PART NO.
<ul style="list-style-type: none"> 1 257-36 2 257-36FP 3 257-03FP
DATA
<p>Maximum air pressure: 1,0 (10) MPa (bar)</p> <p>1 Description: Grease pump kits designed to meet any needs of greasing, based on our high performance grease pumps. Includes: 55:1 pump, grease gun, z-swivel, grease hose 3/8" x 2m, handle, drum cover.</p> <p>For container: 20 kg</p> <p>2 Description: Grease pump kits designed to meet any needs of greasing, based on our high performance grease pumps. Includes: 55:1 pump, grease gun, z-swivel, grease hose 3/8" x 2m, handle, drum cover, follower plate.</p> <p>For container: 20 kg</p> <p>3 Description: Grease pump kits designed to meet any needs of greasing, based on our high performance grease pumps. Includes: 55:1 pump, grease gun, z-swivel, grease hose 3/8" x 2m, handle, drum cover, follower plate.</p> <p>For container: 15-18 kg</p>

TYPE
Transfer pump for grease
PART NO.
<ul style="list-style-type: none"> 1 257-05 2 257-06
DATA
<p>Maximum air pressure: 1,0 (10) MPa (bar)</p> <p>1 Description: Filling pump for large volumes of grease into containers for central lubrication, in production, sliding board trucks, etc. Includes: 4m x 5/8" hose, H.V. Dispensing gun, H.D. trolley. Drum not included.</p> <p>2 Description: Filling pump for large volumes of grease into containers for central lubrication, in production, sliding board trucks, etc. Includes: 4m x 5/8" hose, digital meter, H.D. trolley. Drum not included.</p>

TYPE
Centralized lubrication filler pump 3:1
PART NO.
<ul style="list-style-type: none"> 1 137-21 2 137-22
DATA
<p>1 Description: Air operated pump for quick, safe and clean re-filling of grease buckets in chassis lube systems. For grease up to NLGI 0. Capacity: 6kg/min NLGI 0 at 0,7 MPa. Drum size: 20kg, Includes: 3:1 pump, 1/4" ball valve, trolley, drum cover, 1.5m hose c/w quick coupling.</p> <p>Capacity: 6 kg/min</p> <p>2 Description: Air operated pump for quick, safe and clean re-filling of grease buckets in chassis lube systems. For grease up to NLGI 0. Capacity: 6kg/min NLGI 0 at 0,7 MPa. Drum size: 50kg, Includes: 3:1 pump, 1/4" ball valve, trolley, drum cover, 1.5m hose c/w quick coupling.</p> <p>Capacity: 6 kg/min</p>



TYPE
Centralized lubrication filler pump 15:1
PART NO.
257-22
DATA
<p>Description: Air operated pump for quick, safe and clean re-filling of grease buckets in chassis lube systems. for grease up to NLGI 0. Capacity: 6kg/min NLGI 0 at 0,7 MPa. Drum size: 50kg, Includes: 15:1 pump, 1/4" ball valve, trolley, drum cover, 1.5m hose c/w quick coupling ISO7241-1.</p> <p>For container: 50 kg</p> <p>Maximum air pressure: 1,0 (10) MPa (bar)</p>

TYPE
Centralized filler pumps
PART NO.
<p>① 20720</p> <p>② 20721</p>
DATA
<p>① Description: Sturdy hand operated pump for quick, safe and clean re-filling of buckets in chassis lube systems. Capacity: 80gr per stroke. Includes: hand pump, drum cover, 1.5m hose c/w quick coupling.</p> <p>Capacity: 80 gr/stroke</p> <p>For container: 12-15 kg</p> <p>② Description: Sturdy hand operated pump for quick, safe and clean re-filling of buckets in chassis lube systems. Capacity: 80gr per stroke. Includes: hand pump, drum cover, 1.5m hose c/w quick coupling.</p> <p>Capacity: 80 gr/stroke</p> <p>For container: 20 kg</p>

TYPE
Grease filler pump for grease guns
PART NO.
<p>① 20710</p> <p>② 20711</p> <p>③ 20712</p>
DATA
<p>Packaging LxWxH: 0,78 x 0,13 x 0,35 m</p> <p>① Description: Sturdy hand operated pump for quick, safe and clean re-filling of lever grease guns. Capacity: 80gr per stroke Includes: hand pump, drum cover, follower plate, loader nipple 9 & 12,5mm.</p> <p>For container: 12-15 kg</p> <p>② Description: Sturdy hand operated pump for quick, safe and clean re-filling of lever grease guns. Capacity: 80gr per stroke Includes: hand pump, drum cover, follower plate, loader nipple 9 & 12,5mm.</p> <p>For container: 20 kg</p> <p>③ Description: Sturdy hand operated pump for quick, safe and clean re-filling of lever grease guns. Capacity: 80gr per stroke Includes: hand pump, drum cover, follower plate, loader nipple 9 & 12,5mm.</p> <p>For container: 50 kg</p>

TYPE
Loader nipple
PART NO.
26784
DATA
<p>Description: For re-filling grease lever pumps using filler pumps. Male part. The corresponding female coupler is found on filler pumps 20710, 20711 & 20712.</p> <p>Dimension: Ø12 mm</p> <p>Connection: 1/8" (M) BSP</p>

HOSE REELS FOR GREASE

HOSE REELS FOR GREASE

S10/S15-Series



C15/T15-Series



S15/T15-Series



CC15/T20-Series



TYPE
S10/S15-Series
PART NO.
1 27837 2 27835 3 27834
DATA
Dimension: 10 (3/8") mm (inch) Maximum pressure: 35 (350) MPa (bar) 1 Hose length: 10 m max (without hose) Connection: 3/8" - 3/8" (M)-(M) BSP 2 Hose length: 15 m max (without hose) Connection: 3/8" - 3/8" (M)-(M) BSP 3 Hose length: 15 m Connection: 3/8" - 3/8" (M)-(M) BSP

TYPE
T15/C15-Series
PART NO.
1 27841 3 27833 2 27840 4 27832
DATA
Dimension: 10 (3/8") mm (inch) Maximum pressure: 35 (350) MPa (bar) 1 Hose length: 15 m max (without hose) Connection: 3/8" - 3/8" (M)-(M) BSP 2 Hose length: 15 m Connection: 3/8" - 3/8" (M)-(M) BSP 3 Hose length: 15 m max (without hose) Connection: 3/8" - 3/8" (M)-(M) BSP 4 Hose length: 15 m Connection: 3/8" - 3/8" (M)-(M) BSP

TYPE
Reel kit with grease gun
PART NO.
1 327-04 2 327-12
DATA
Maximum pressure: 35 (350) MPa (bar) 1 Description: Includes: hose reel T15 15m (27832), z-swivel, grease gun (26716), ball valve. 2 Description: Includes: hose reel S15 15m (27834), z-swivel, grease gun (26716), ball valve.

TYPE
T20/CC15-Series
PART NO.
1 27850 2 27852 3 27853
DATA
1 Dimension: 12,5 (1/2") mm (inch) Maximum pressure: 27,5 (275) MPa (bar) Hose length: 20 m Connection: 1/2" - 1/2" (M)-(M) BSP 2 Dimension: 6,35 (1/4") mm (inch) Maximum pressure: 35 (350) MPa (bar) Hose length: 10 m Connection: 1/4" - 1/4" (M)-(M) BSP 3 Dimension: 10 (3/8") mm (inch) Maximum pressure: 35 (350) MPa (bar) Hose length: 15 m Connection: 3/8" - 1/4" (F)-(M) BSP



TYPE
Lever grease pump standard duty
PART NO.
1 20701 2 20702 3 20703
DATA
1 Description: Hand operated grease gun for quick and reliable greasing operation in many applications using grease up to NLGI 2. For bulk grease or 400 gram cartridge, Capacity: 1 cm ³ /stroke. Capacity: 0,8 gr/stroke Maximum pressure: 35 (350) MPa (bar) 2 Description: Heavy duty lever grease pump with variable stroke. Equipped with ergonomic handle. Includes filler nipple and bleeder valve. For bulk grease or 400 gram cartridge Capacity: 1 cm ³ per stroke. Capacity: 0,8 gr/stroke Maximum pressure: 70 (700) MPa (bar) 3 Description: Hand operated grease gun for quick and reliable greasing operation in many applications using grease up to NLGI 2. For bulk grease or 400 gram cartridge. Capacity: 1 cm ³ per stroke. Delivered with outlet tube and hydraulic connector. Capacity: 0,8 gr/stroke Maximum pressure: 45 (450) MPa (bar)

TYPE
Lever grease gun standard duty 1000 cm ³
PART NO.
20706
DATA
Description: For use either with bulk grease (filled by hand or by loader pump). Capacity: 0,8 gr/stroke Maximum pressure: 35 (350) MPa (bar) Volume: 1000 cm ³

TYPE
High pressure pump with container
PART NO.
1 20742 2 20745
DATA
1 Capacity: 10/15/20 gr/stroke Maximum pressure: 35 (350) MPa (bar) Volume: 16 kg Hose length: 1,5 m 2 Capacity: 2 gr/stroke Maximum pressure: 50 (500) MPa (bar) Volume: 5 kg Hose length: 2 m

TYPE
High pressure greaser
PART NO.
1 20730 2 20731
DATA
Capacity: 2 gr/stroke Maximum pressure: 35 (350) MPa (bar) 1 For container: 12-15 kg 2 For container: 20 kg

BATTERY OPERATED GREASE GUNS

GREASE CONTROL VALVES AND ACCESSORIES

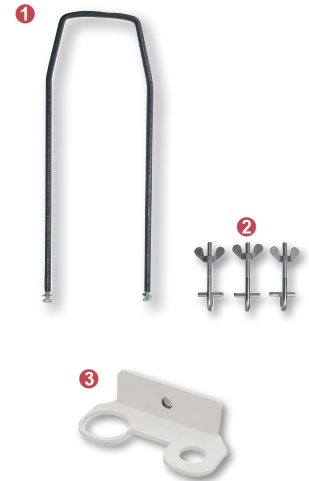
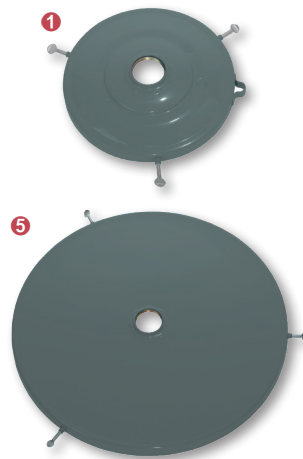


TYPE
20V Battery operated grease gun
PART NO.
<ul style="list-style-type: none"> ❶ 25532 ❷ 25534
DATA
<p>Maximum pressure: 50 (500) MPa (bar)</p> <p>❶ Description: Delivers up to 24 grease cartridges per charge free flow. LCD-display which shows battery status, grease meter, remaining grease in grease tube, warns if fitting is clogged, if grease tube has air pockets or is empty. Built in LED work light. Includes: Battery powered grease gun 20V, 1pc 20V 2Ah Lithium-Ion battery, battery charger 230V, hose 1100mm with hydraulic nozzle.</p> <p>❷ Description: Delivers up to 40 grease cartridges per charge free flow. LCD-display which shows battery status, grease meter, remaining grease in grease tube, warns if fitting is clogged, if grease tube has air pockets or is empty. Built in LED work light. Includes: Battery powered grease gun 20V, 1pc 20V 4Ah Lithium-Ion battery, battery charger 230V, hose 1100mm with hydraulic nozzle.</p>

TYPE
Batteries
PART NO.
<ul style="list-style-type: none"> ❶ 2553401 ❷ 2553201
DATA
<p>❶ Capacity: 4 Ah</p> <p>Voltage: 20 V AC</p> <p>Fits: 25534</p> <p>❷ Capacity: 2 Ah</p> <p>Voltage: 20 V DC</p> <p>Fits: 25532</p>

TYPE
Battery chargers
PART NO.
2553402
DATA
<p>Fits: 25532, 25534</p>

TYPE
Grease control valve
PART NO.
<ul style="list-style-type: none"> ❶ 26716 ❷ 26716-01 ❸ 26716-11
DATA
<p>Maximum pressure: 50 (500) MPa (bar)</p> <p>❶ Model: Grease gun with outlet tube</p> <p>❷ Model: Grease gun with flex hose (450mm)</p> <p>❸ Model: Grease gun with flex hose (450mm) and Z-swivel</p>

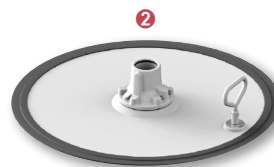


TYPE
Meters for grease
PART NO.
<p>1 26715</p> <p>2 2168600</p>
DATA
<p>Capacity: >1000 gr/min</p> <p>Maximum pressure: 50 (500) MPa (bar)</p> <p>Accuracy: 3 % ±</p> <p>1 Model: Digital grease meter with grease gun</p> <p>Connection: 1/4" (F) BSP</p> <p>2 Model: Digital grease inline meter. 1/8" (F) BSP 2500 gr/min 70 (700) MPa (bar)</p> <p>Connection: 1/8" (F) BSP</p>

TYPE
Air operated grease gun
PART NO.
25770
DATA
<p>Description: For quick and reliable greasing operation in many applications using grease up to NLGI 2. For bulk grease or 400 gram cartridge.</p> <p>Ratio: 60:1</p> <p>Capacity: 1 gr/stroke</p> <p>Maximum air pressure: 1,0 (10) MPa (bar)</p> <p>Connection: 1/4" (F) BSP</p>

TYPE
Drum covers
PART NO.
<p>1 26770 4 26773</p> <p>2 26771 5 26774</p> <p>3 26772</p>
DATA
<p>1 For container: 12 kg</p> <p>Dimension: Ø 245-285 mm</p> <p>2 For container: 20 kg</p> <p>Dimension: Ø 280-320 mm</p> <p>3 For container: 50 kg</p> <p>Dimension: Ø 320-380 mm</p> <p>4 For container: 50 kg</p> <p>Dimension: Ø 360-408 mm</p> <p>5 For container: 180 kg</p> <p>Dimension: Ø 560-610 mm</p>

TYPE
Drum cover accessories
PART NO.
<p>1 26752</p> <p>2 2168920</p> <p>3 26778</p>
DATA
<p>1 Model: Carrying handle for 26770</p> <p>2 Model: T-Screws for plastic buckets, 3 pcs</p> <p>3 Model: Holder for grease gun</p>



TYPE
Drum cover for H.D. pumps
PART NO.
26775
DATA
For container: 180 kg Dimension: Ø 560-610 mm

TYPE
Follower plates
PART NO.
1 26767 4 26763 2 26765 5 26762 3 26764 6 26760
DATA
1 For container: 18 kg Dimension: Ø 230-260 mm 2 For container: 20 kg Dimension: Ø 260-290 mm 3 For container: 25 kg Dimension: Ø 300-330 mm 4 For container: 50 kg Dimension: Ø 330-370 mm 5 For container: 50 kg Dimension: Ø 360-390 mm 6 For container: 180 kg Dimension: Ø 550-590 mm

TYPE
Follower plates for H.D. pumps
PART NO.
1 26768 2 26769
DATA
1 For container: 50 kg Dimension: Ø 360-405 mm 2 For container: 180 kg Dimension: Ø 550-590 mm

TYPE
Grease hoses
PART NO.
1 26710 2 26711 3 26712
DATA
Connection: 1/4" - 3/8" (F)-(M) BSPT 1 Length: 2 m 2 Length: 4 m 3 Length: 6 m

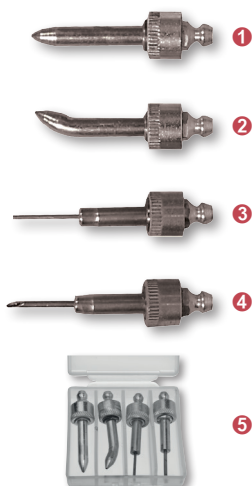


TYPE
Outlet hoses for grease guns
PART NO.
<p>1 26731</p> <p>2 26732</p> <p>3 26733</p>
DATA
<p>Maximum pressure: 50 (500) MPa (bar)</p> <p>Connection: 1/8" (M)-(M) BSP</p> <p>1 Model: Outlet hose 1/8" x 200 mm</p> <p>Hose length: 200 mm</p> <p>2 Model: Outlet hose 1/8" x 300 mm</p> <p>Hose length: 300 mm</p> <p>3 Model: Outlet hose grease 450 mm x 1/8"</p> <p>Hose length: 450 mm</p>

TYPE
Outlet tube for grease guns
PART NO.
2060201
DATA
<p>Dimension: Ø10 mm</p> <p>Thread: 1/8" (M)-(M) BSPT</p> <p>Length: 140 mm</p>

TYPE
Grease swivels
PART NO.
<p>1 26725 4 26726</p> <p>2 26727 5 26728</p> <p>3 26729</p>
DATA
<p>Maximum pressure: 50 (500) MPa (bar)</p> <p>1 Connection: 1/4" - 1/4" (F)-(M) BSP</p> <p>2 Connection: 1/4" - 1/2"-27 (M) NPT</p> <p>3 Connection: 1/8" - 1/2"-27 (M) NPTF</p> <p>4 Connection: 1/4" (F)-(M) BSP</p> <p>5 Connection: 1/8" (F)-(M) BSPT</p>

TYPE
Grease connectors
PART NO.
<p>1 26721 3 26722</p> <p>2 26723 4 26730</p>
DATA
<p>Dimension: Ø 15 mm</p> <p>Connection: 1/8" (F) BSP</p> <p>1 Model: Grease connector Ø15mm 4 jaws</p> <p>2 Model: Grease connector G1/8" Ø15mm 4 jaws with built-in check valve</p> <p>3 Model: Grease connector G1/8" Ø18 mm with 3 jaws.</p> <p>4 Model: Button head nozzle 16 mm</p>



3 X = 19 mm
4 X = 32 mm

TYPE
Lock-on grease quick coupler
PART NO.
26739
DATA
Maximum pressure: 70 (700) MPa (bar)
Connection: 1/8" (F) BSP
Description: Revolutionary grease coupler. Smooth lock-on mechanism that eases grease fitting coupling and uncoupling. This is a durable, jaws-free coupler that includes seven retaining balls, assuring a proper sealing between grease fitting* and grease pump up to a pressure of 700 bar. Store display for countertop placement also available. Place for 10 couplers.
* DIN 71412

TYPE
Needle nozzles
PART NO.
1 2169182 4 2169185 2 2169183 5 26718 3 2169184
DATA
1 Model: Needle nozzle Ø 6 mm
2 Model: Needle nozzle Ø 6 mm 45°
3 Model: Needle nozzle Ø 1,4 mm
4 Model: Needle nozzle Ø 2,6 mm
5 Model: Needle nozzle kit of 4 different types

TYPE
Protective cover for grease fittings
PART NO.
1 43770 2 43771
DATA
1 Model: Protection cover (red) for grease fittings
2 Model: Protection cover (yellow) for grease fittings

TYPE
Straight, pipe thread. Zinc-plated steel.
PART NO.
1 1610-BL 4 1669-B 2 1634 5 1627-B 3 1607-B 6 1627-S
DATA
1 Thread: 1/8" (M) BSP
2 Thread: 1/8" (M) NPT
3 Thread: 1/8" (M) BSP
4 Thread: 1/8" (M) BSP
5 Thread: 1/4" (M) NPTF
6 Thread: 1/4"-28 SAE-LT



TYPE	
Straight, metric. Zinc-plated steel.	
PART NO.	
1 2106	3 2109
2 2110	4 2112
DATA	
1 Thread: M6x1	
2 Thread: M8X1	
3 Thread: 10x1 mm	
4 Thread: M8X1,25	

TYPE	
Angled 30-67°. Zinc-plated steel.	
PART NO.	
1 1629-B	
2 1688-B	
3 2107	
DATA	
1 Type: 67°	
Thread: 1/4" (M) BSP	
2 Type: 45°	
Thread: R 1/8"	
3 Type: 45°	
Thread: M6x1	

TYPE	
Angled 90°. Zinc-plated steel.	
PART NO.	
1 1613-B	4 1606-B
2 2114	5 2105
3 2108	
DATA	
1 Type: 90°	
Thread: 1/8" NPT	
2 Type: 90°	
Thread: M8X1,25	
3 Type: 90°	
Thread: M6x1	
4 Type: 90°	
Thread: 1/8" (M) BSP	
5 Type: 90°	
Thread: M8X1	

TYPE	
Straight, pipe thread. Stainless steel	
PART NO.	
1 1961-S	
2 1966-S	
3 512-RF	
DATA	
1 Type: Straight	
Thread: 1/8" (M) BSP	
Material: Stainless steel (AISI 303)	
2 Type: Straight	
Thread: 1/4"x28SAE	
Material: Stainless steel (AISI 303)	
3 Type: Straight	
Thread: G1/4"	
Material:	

GREASE FITTINGS

GREASE FITTINGS



TYPE
Extensions. Zinc-plated steel.
PART NO.
<ul style="list-style-type: none"> 1 43762 2 43706 3 43718
DATA
<p>1 Thread: 1/8" (F)-(M) NPTF</p> <p>Length: 31 mm</p> <p>2 Thread: 1/8" (F)-(M) NPTF</p> <p>Length:</p> <p>3 Thread: 1/8" -1/8" (F)-(M) BSP</p> <p>Length: 32 mm</p>

TYPE
Drive fittings. Zinc-plated steel.
PART NO.
501-A
DATA
<p>Type: Straight</p> <p>Connection: Ø8 mm</p>

TYPE
15mm hex. Zinc-plated steel.
PART NO.
208-A
DATA
<p>Thread: G1/8"</p>

TYPE
16mm hex. Zinc-plated steel.
PART NO.
<ul style="list-style-type: none"> 1 A-212 2 A-1184 3 A-210
DATA
<p>1 Dimension: Ø16 mm</p> <p>Thread: M10x1</p> <p>2 Dimension: Ø16 mm</p> <p>Thread: 1/8"NPTF</p> <p>3 Dimension: Ø16 mm</p> <p>Thread: 3/8" (M) NPTF</p>



TYPE
22mm hex. Zinc-plated steel.
PART NO.
<ul style="list-style-type: none"> ❶ 1823-1 ❷ 1822-A1 ❸ 1820-1
DATA
<p>Type: Ø22 mm</p> <ul style="list-style-type: none"> ❶ Thread: 1/4" (M) NPTF ❷ Thread: 3/8" (M) NPTF ❸ Thread: 1/2" (M) NPTF

TYPE
Breather fittings. Zinc-plated steel.
PART NO.
<ul style="list-style-type: none"> ❶ 300805 ❷ 304810 ❸ 131000
DATA
<ul style="list-style-type: none"> ❶ Thread: 1/8" (M) BSP <p>Maximum pressure: 0.0 (0,0) MPa (bar)</p> <ul style="list-style-type: none"> ❷ Thread: 1/8" (M) BSP <p>Maximum pressure: 0.0008 (0,008) MPa (bar)</p> <ul style="list-style-type: none"> ❸ Thread: 1/8" (M) BSP <p>Maximum pressure: 0.003 (0,03) MPa (bar)</p>

TYPE
Relief fittings. Zinc-plated steel.
PART NO.
<ul style="list-style-type: none"> ❶ 317400 ❷ 323060 ❸ 47100
DATA
<ul style="list-style-type: none"> ❶ Thread: 1/8" (M) BSP <p>Maximum pressure: 0,002-0,007 (0,02-0,07) MPa (bar)</p> <ul style="list-style-type: none"> ❷ Thread: 1/8" (M) BSP <p>Maximum pressure: 0,1-0,17 (1,0-1,7) MPa (bar)</p> <ul style="list-style-type: none"> ❸ Thread: 1/8" (M) BSP <p>Maximum pressure: 0,31-0,55 (3,1-5,5) MPa (bar)</p>

TYPE
Grease fitting rejuvenator
PART NO.
339841
DATA
<p>Description: Simply fill the tool with a light oil and with a few taps the joint will open. The grease fitting rejuvenator will allow a clogged grease fitting and /or joint to take on grease by injecting a light viscosity oil into the grease joint via the grease fitting, thus breaking up and removing any dirt, rust or debris. The purpose of this tool is to free up the joint and the fitting enabling them to be greased. Once the tool is installed onto the grease fitting, only a tapping of the piston is required to open a joint.</p>

Waste oil equipment

Waste oil pumps 72

Equipment for pits 72

Mobile waste oil drainers with bowl 74

Waste oil handling 79

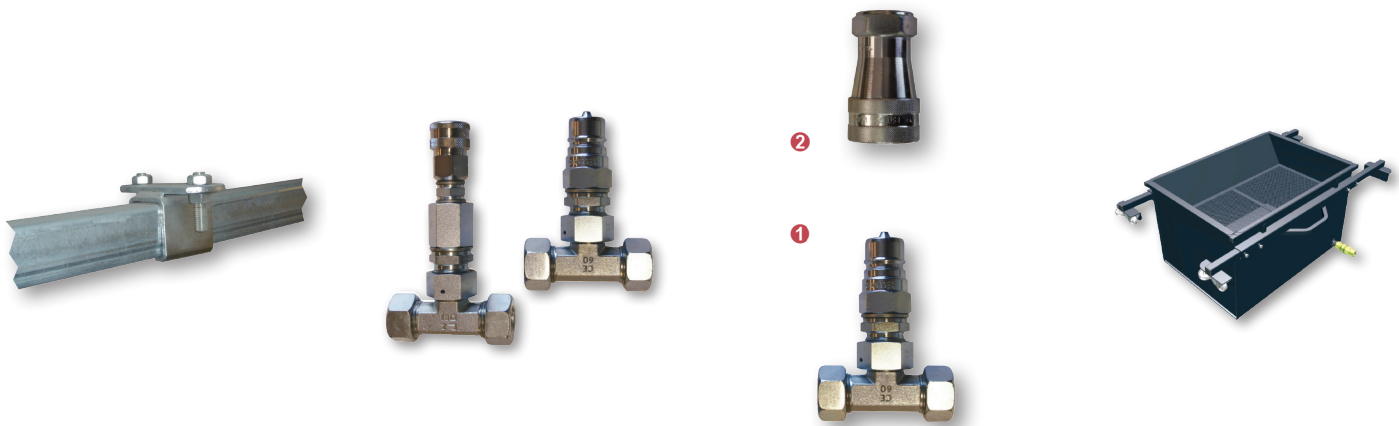


TYPE
Waste oil pump 1:1
PART NO.
C11745
DATA
Capacity: 15 l/min free flow
Maximum air pressure: 0,7 (7) MPa (bar)
Inlet: 1" (F) BSP
Outlet: 3/4" (F) BSP
Connection: 1/4" (F) BSP

TYPE
Waste oil pump 5:1
PART NO.
15832
DATA
Capacity: 38 l/min free flow
Maximum air pressure: 1,0 (10) MPa (bar)
Inlet: 1" (F) BSP
Outlet: 3/4" (F) BSP
Connection: 1/4" (F) BSP

TYPE
Evacuation pump for mobile drainers
PART NO.
<ol style="list-style-type: none"> 1 317-44 2 317-44SP
DATA
Maximum air pressure: 1,0 (10) MPa (bar)
1 Description: Discharge pump to extract waste oil and antifreeze from any of our mobile drainers. Do not use with flammable or corrosive fluids. Includes: Pump B11741, wall bracket, 1/4" filter regulator, 1,5m air line hose, 1,5m discharge hose, 3/4" ball valve, 2m suction hose c.w. quick coupler, suction filter.
Pump: B11741 (1:1)
2 Description: Discharge pump to extract waste oil and antifreeze from any of our mobile drainers. Do not use with flammable or corrosive fluids. Includes: Pump 15831, wall bracket, 1/4" filter regulator, 1,5m air line hose, 1,5m discharge hose, 3/4" ball valve, 2m Suction hose c.w. quick coupler, suction filter.
Pump: 15831 (5:1)

TYPE
Variable waste oil arm for pits
PART NO.
<ol style="list-style-type: none"> 1 317-60 2 317-65
DATA
Maximum air pressure: 0,7 (7) MPa (bar)
Pump: 15831
Volume: 45 l
Hose length: 2 m
Filtration: 600 µm
1 Description: Ideal solution for quick and efficient waste oil draining in pits. The waste oil is pumped directly to the tank from the collection bowl which is mounted on a rail and can be used along the entire length of the pit. Controls for pump speed and arm up/down are mounted on the arm.
Media: Waste oil
2 Description: Ideal solution for quick and efficient antifreeze draining in pits. The used antifreeze is pumped directly to the tank from the collection bowl which is mounted on a rail and can be used along the entire length of the pit. Controls for pump speed and arm up/down are mounted on the arm.
Media: Glycol



TYPE
Rail kit for 317-60, -65
PART NO.
<ul style="list-style-type: none"> 1 317-61 2 317-66
DATA
<p>1 Description: Includes: 4m rail, 2 brackets, 1 joining piece.</p> <p>2 Description: Fasteners and bracket for mounting rails in prefabricated pits made by Balzer.</p>

TYPE
Connection kit air & oil for 317-60
PART NO.
317-62
DATA
<p>Description: Includes: T-joint Ø22 with air coupler, T-joint Ø22 with oil coupler.</p>

TYPE
Connection kit glycol for 317-65
PART NO.
<ul style="list-style-type: none"> 1 317-63 2 3315098
DATA
<p>1 Model: Connection kit anti freeze for 317-65 for Ø22mm tube incl air coupler</p> <p>2 Model: Coupler anti freeze 3/4" for 317-65</p>

TYPE
Waste oil collector 95 l
PART NO.
0949-160
DATA
<p>Description: A sturdy waste oil collector for pits. The emptying of the drainers is done with discharge pump part no 317-44 or 317-47. 95L Tank with adjustable arms, 1030-1450mm. Do not use with flammable or corrosive fluids.</p> <p>Volume: 95 l</p>



TYPE
25 l oil drainer
PART NO.
318-45
DATA
<p>Description: Ideal use with boats, movers, tractors, cars etc. Includes: vacuum pump, 2 m suction hose, probe kit</p>

TYPE
70 l drainer w/o bowl
PART NO.
318-62
DATA
<p>Description: Mobile waste oil drainer used for collection of all types of oils. The drainer can be used under lifts or inside pits. Design and performance top of the line. Do not use with flammable or corrosive fluids. Discharge by compressed air max 0,5 bar. Includes: 70 l tank, 2 m discharge hose, safety and breathing valve, vacuum pump, probe kit with 8 probes.</p>

TYPE
Standard 70 l drainer
PART NO.
<p>1 318-65</p> <p>2 318-66</p>
DATA
<p>1 Description: Mobile waste oil drainer used for collection of all types of oils. The drainer can be used under lifts or inside pits. Do not use with flammable or corrosive fluids. Discharge by compressed air max 0,5 bar. Includes: 70 l tank, 20 l bowl.</p> <p>2 Description: Mobile waste oil drainer used for collection of all types of oils. The drainer can be used under lifts or inside pits. Do not use with flammable or corrosive fluids. To be discharge by pump 317-44. Includes: 70 l tank, 20 l bowl, quick coupler.</p>

TYPE
Combi 70 l drainer
PART NO.
<p>1 318-64</p> <p>2 318-67</p>
DATA
<p>1 Description: Mobile waste oil drainer used for collection of all types of oils. The drainer can be used under lifts or inside pits. Design and performance top of the line. Do not use with flammable or corrosive fluids. Discharge by compressed air max 0,5 bar. Includes: 70 l tank, 20 l bowl, 2 m discharge hose, safety and breathing valve, vacuum pump, probe kit with 8 probes.</p> <p>2 Description: Mobile waste oil drainer used for collection of all types of oils. The drainer can be used under lifts or inside pits. Design and performance top of the line. Do not use with flammable or corrosive fluids. To be discharge by pump 317-44. Includes: 70 l tank, 20 l bowl, vacuum pump, probe kit with 8 probes Safety and breathing valve, quick coupler.</p>



TYPE
Deluxe 70 l drainer
PART NO.
<ul style="list-style-type: none"> 1 318-63 2 318-68
DATA
<p>1 Description: Mobile waste oil drainer used for collection of all types of oils. The drainer can be used under lifts or inside pits. Design and performance top of the line. Do not use with flammable or corrosive fluids. Discharge by compressed air max 0,5 bar. Includes: 70 l tank, 20 l bowl, vacuum pump, probe kit with 8 probes, safety and breathing valve, 10 l inspection tank.</p> <p>2 Description: Mobile waste oil drainer used for collection of all types of oils. The drainer can be used under lifts or inside pits. Design and performance top of the line. Do not use with flammable or corrosive fluids. To be discharge by pump 317-44. Includes: 70 l tank, 20 l bowl, vacuum pump, probe kit with 8 probes, Safety and breathing valve, 10 l inspection tank, quick coupler.</p>

TYPE
Special 70 l drainer for motorbikes
PART NO.
318-51
DATA
<p>Description: Waste oil unit with a low bowl. The unit can be discharged by gravity or air pressure.</p>

TYPE
Pump discharge kit
PART NO.
<ul style="list-style-type: none"> 1 317-44 2 317-44SP
DATA
<p>Maximum air pressure: 1,0 (10) MPa (bar)</p> <p>1 Description: Discharge pump to extract waste oil and antifreeze from any of our mobile drainers. Do not use with flammable or corrosive fluids. Includes: Pump B11741, wall bracket, 1/4" filter regulator, 1,5m air line hose, 1,5m discharge hose, 3/4" ball valve, 2m suction hose c.w. quick coupler, suction filter.</p> <p>Pump: B11741 (1:1)</p> <p>2 Description: Discharge pump to extract waste oil and antifreeze from any of our mobile drainers. Do not use with flammable or corrosive fluids. Includes: Pump 15831, wall bracket, 1/4" filter regulator, 1,5m air line hose, 1,5m discharge hose, 3/4" ball valve, 2m Suction hose c.w. quick coupler, suction filter.</p> <p>Pump: 15831 (5:1)</p>

TYPE
Standard 100 l drainer
PART NO.
<ul style="list-style-type: none"> 1 318-80 2 318-85
DATA
<p>1 Description: Mobile waste oil drainer used for collection of all types of oils. The drainer can be used under lifts or inside pits. Unique oversized extension and large tool tray on top of the tank improves the work space. Design and performance top of the line. Do not use with flammable or corrosive fluids. To be discharge by pump 317-44. Includes: 100 l tank, 20 l bowl, quick coupler.</p> <p>2 Description: Mobile waste oil drainer used for collection of all types of oils. The drainer can be used under lifts or inside pits. Unique oversized extension and large tool tray on top of the tank improves the work space. Design and performance top of the line. Do not use with flammable or corrosive fluids. Discharge by compressed air max 0,5 bar. Includes: 100 l tank, 20 l bowl, 2 m discharge hose, safety and breathing valve.</p>

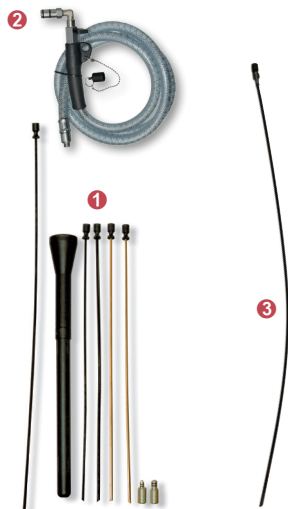


TYPE
Combi 100 l drainer
PART NO.
<ul style="list-style-type: none"> 1 318-81 2 318-86
DATA
<p>1 Description: Mobile waste oil drainer used for collection of all types of oils. The drainer can be used under lifts or inside pits. Unique oversized extension and large tool tray on top of the tank improves the work space. Design and performance top of the line. Do not use with flammable or corrosive fluids. To be discharge by pump 317-44. Includes: 100 l tank, 20 l bowl, vacuum pump, probe kit with 5 probes, safety and breathing valve, quick coupler.</p> <p>2 Description: Mobile waste oil drainer used for collection of all types of oils. The drainer can be used under lifts or inside pits. Unique oversized extension and large tool tray on top of the tank improves the work space. Design and performance top of the line. Do not use with flammable or corrosive fluids. Discharge by compressed air max 0,5 bar. Includes: 100 l tank, 20 l bowl, 2 m discharge hose, safety and breathing valve, vacuum pump, probe kit with 5 probes.</p>

TYPE
Deluxe 100 l drainer
PART NO.
<ul style="list-style-type: none"> 1 318-82 2 318-87
DATA
<p>1 Description: Mobile waste oil drainer used for collection of all types of oils. The drainer can be used under lifts or inside pits. Unique oversized extension and large tool tray on top of the tank improves the work space. Design and performance top of the line. Do not use with flammable or corrosive fluids. To be discharge by pump 317-44. Includes: 100 l tank, 20 l bowl, vacuum pump, probe kit with 5 probes, safety and breathing valve, 10 l Inspection tank, quick coupler.</p> <p>2 Description: Mobile waste oil drainer used for collection of all types of oils. The drainer can be used under lifts or inside pits. Unique oversized extension and large tool tray on top of the tank improves the work space. Design and performance top of the line. Do not use with flammable or corrosive fluids. Discharge by compressed air max 0,5 bar. Includes: 100 l tank, 20 l bowl, vacuum pump, Probe kit with 5 probes, safety and breathing valve. 10 l Inspection tank.</p>

TYPE
Accessories
PART NO.
<ul style="list-style-type: none"> 1 318-30 2 16791
DATA
<p>1 Description: A handy waste oil bowl for 200 l drum. Include: 2" BSP drum connection. Do not use with flammable or corrosive fluids.</p> <p>2 Description: Filter pad for mobile drainers to filter out large particles and prevent splashback.</p>

TYPE
Eurovac
PART NO.
11780
DATA
<p>Description: Eurovac saves the environment, time and money. Install directly onto a standard drum. Applications: Extract floor spillage such as oil, anti freeze, water e.g. Empty and clean kegs, drums and tanks e.g.</p> <p>Capacity: 70 l/min free flow</p> <p>Air connection: 1/4" (F) BSP</p> <p>Maximum air pressure: 0,6 (6) MPa (bar)</p> <p>Air consumption: 300-1000 l/min free flow</p> <p>Vacuum level: -4000 mm</p> <p>Noise level: 80 dB</p>

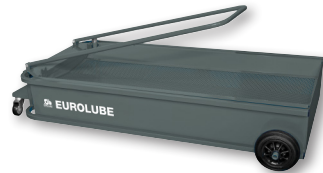


TYPE
Suction probes and handle
PART NO.
<ul style="list-style-type: none"> ❶ 3188587 ❷ 3188595 ❸ 3188596
DATA
<p>❶ Description: Complete kit of probes to be used with our waste oil pumps and waste oil drainers. Includes: Mercedes adapter, VAG adapter, PSA & BMW adapter, Two flexible probes Ø6x4mm, Ø8x6mm, L=700mm, Two rigid probes Ø5x4mm, Ø6x5mm, L=700mm, One flexible probe Ø8x6mm, L=1000mm</p> <p>❷ Description: Suction handle with connector for suction probes.</p> <p>❸ Description: Extra long probe to be used with our waste oil pumps and waste oil drainers. Length 1300mm, diameter 8mm.</p>

TYPE
Drain pan
PART NO.
<ul style="list-style-type: none"> ❶ 16790 ❷ 16793 ❸ 16794
DATA
<p>❶ Model: Drain bowl 14 litre</p> <p>Volume: 14 l</p> <p>❷ Model: 8L Drain pan with lid and spout</p> <p>Volume: 8 l</p> <p>❸ Model: Wash/ Waste oil bowl in polyethylene. 8 l</p> <p>Volume: 8 l</p>

TYPE
Accessories
PART NO.
3188588
DATA
<p>Description: Conversion kit for discharge by pump kit 317-44, fits all models in 318-series</p>

TYPE
Quick coupler QR ISO-A
PART NO.
<ul style="list-style-type: none"> ❶ 1367769 ❷ 1367770
DATA
<p>❶ Description: Fits waste oil/coolant arm 317-60/65, waste oil trolley 318-xx, draining pump 317-44, 317-44SP and fits to quick connector kit 3188588, delivered before 2024-02-14</p> <p>Thread: 3/4" (F) BSP</p> <p>❷ Description: Fits waste oil/coolant arm 317-60/65, waste oil trolley 318-xx, draining pump 317-44, 317-44SP and included in kit 3188588, delivered before 2024-02-14</p> <p>Thread: 3/4" (F) BSP</p>

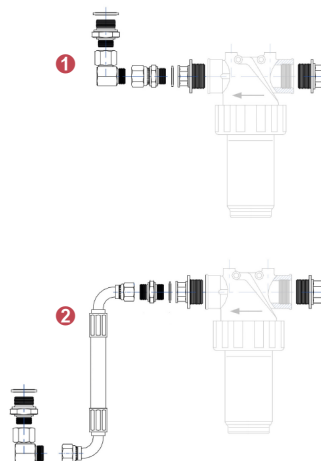
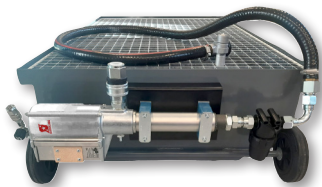


TYPE
Quick coupler TEMA profile
PART NO.
<p>1 1367771</p> <p>2 1367772</p>
DATA
<p>1 Description: Fits waste oil arm 317-60, waste oil trolley 318-xx, draining pump 317-44, 317-44SP and quick connector kit 3188588, delivered after 2024-02-14</p> <p>Thread: 3/4" (F) BSP</p> <p>2 Description: Passar spilloljearm 317-60, spilloljevagnar 318-xx, tömningspump 317-44, 317-44SP samt ingår i snabbkopplingsats 3188588, levererade efter 2024-02-14.</p> <p>Thread: 3/4" (F) BSP</p>

TYPE
Low profile drainer 95 l
PART NO.
0951-200
DATA
<p>Description: For easy draining of waste oil directly from the vehicle without using a lift. The drainer is emptied either directly through a valve or with a discharge pump if a quick coupling kit is fitted.</p> <p>Dimension: 1250X610X260 mm</p> <p>Volume: ~95 l</p>

TYPE
Low profile drainer with pump 95 l
PART NO.
0951-500
DATA
<p>Description: Robust waste oil drainer for collecting oils from all types of vehicles. Built-in discharge pump, outlet hose, quick couplers and filter. Do not use in flammable or corrosive liquids.</p> <p>Dimension: 1540X760X350 mm</p> <p>Pump: C11745</p> <p>Volume: 95 l</p> <p>Hose length: 3 m</p>

TYPE
Low profile drainer 200 l
PART NO.
0951-700
DATA
<p>Description: For easy draining of waste oil directly from the vehicle without using a lift. The drainer is emptied either directly through a valve or with a discharge pump if a quick coupling kit is fitted. Suction connection G3/4" (m)</p> <p>Dimension: 1450X820X360 mm</p> <p>Volume: 200 l</p>



TYPE
Low profile drainer with pump and strainer 200 l
PART NO.
0951-900
DATA
<p>Description: Robust waste oil drainer for collecting oils from all types of vehicles. Built-in discharge pump, outlet hose, quick couplers and filter. Do not use flammable or corrosive liquids.</p> <p>Dimension: 1450X820X360 mm</p> <p>Pump: 15832</p> <p>Volume: 200 l</p> <p>Hose length: 2 m</p>

TYPE
Suction strainer
PART NO.
16797
DATA
<p>Maximum working pressure: 2,0 (20) MPa (bar)</p> <p>Maximum temperature: 80 °C</p> <p>Filtration: 600 µm</p> <p>Connection: 1 1/4" (F)-(F) BSP</p>

TYPE
Connection kit for strainer
PART NO.
<p>1 3188771</p> <p>2 3188772</p>
DATA
<p>1 Model: Connection kit for strainer, direct connection to pump foot valve</p> <p>2 Model: Connection kit for strainer, hose connection to pump</p>

TYPE
Vacuum gauge for strainer
PART NO.
3188579
DATA
<p>Description: When attaching a vacuum gauge to the suction strainer a Ø 3 mm hole must be drilled in the bottom of the 1/4 BSP port.</p> <p>Connection: 1/4" (M) BSP</p>

NOTES

A large rectangular area with rounded corners, containing numerous horizontal dotted lines for writing notes.

Multi-fluid equipment

Air operated multi-fluid pumps	82
Wind screen fl / degreaser	85
Meters and control valves	87
Hand operated equipment	89
Measures and funnels	90

C50-Series



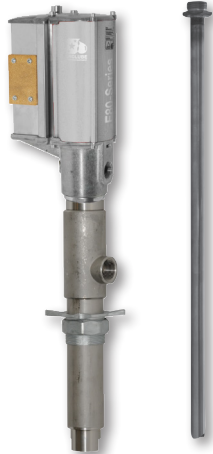
C50-Series



E80-Series



E80-Series



TYPE
1:1 Stainless steel pump
PART NO.
11716
DATA
Ratio: 1:1
Capacity: 30 l/min free flow
Air connection: 1/4" (F) BSP
Maximum air pressure: 1 (10) MPa (bar)
Inlet: 1" (F) BSP
Outlet: 3/4" (M) BSP
Pump tube: Ø50 L=235 mm
Seals: Viton, PTFE

TYPE
1:1 Stainless steel pump
PART NO.
11717
DATA
Ratio: 1:1
Capacity: 30 l/min free flow
Air connection: 1/4" (F) BSP
Maximum air pressure: 1 (10) MPa (bar)
Inlet: -
Outlet: 3/4" (M) BSP
Pump tube: Ø50 L=915 mm
Seals: Viton, PTFE

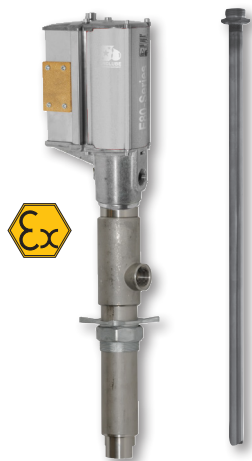
TYPE
4:1 Stainless steel pump
PART NO.
12740
DATA
Ratio: 4:1
Capacity: 30 l/min free flow
Air connection: 1/4" (F) BSP
Maximum air pressure: 1 (10) MPa (bar)
Inlet: 1" (F) BSP
Outlet: 1" (F) BSP
Pump tube: Ø54 L=220 mm
Seals: PTFE / Teflon®

TYPE
4:1 Stainless steel pump
PART NO.
12745
DATA
Ratio: 4:1
Capacity: 30 l/min free flow
Air connection: 1/4" (F) BSP
Maximum air pressure: 1,0 (10) MPa (bar)
Inlet: 1" (F) BSP
Outlet: 1" (F) BSP
Pump tube: Ø25, 54 L=670+220 mm
Seals: PTFE / Teflon®

E80-Series



E80-Series

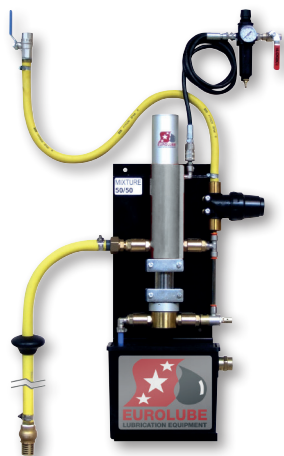


TYPE
4:1 Stainless steel ATEX pump
PART NO.
12741
DATA
Ratio: 4:1
Capacity: 30 l/min free flow
Air connection: 1/4" (F) BSP
Maximum air pressure: 1,0 (10) MPa (bar)
Inlet: 1" (F) BSP
Outlet: 1" (F) BSP
Pump tube: Ø54 L=220 mm
Seals: PTFE / Teflon®
Classification: ATEX

TYPE
4:1 Stainless steel ATEX pump
PART NO.
12746
DATA
Ratio: 4:1
Capacity: 30 l/min free flow
Air connection: 1/4" (F) BSP
Maximum air pressure: 1,0 (10) MPa (bar)
Inlet: 1" (F) BSP
Outlet: 1" (F) BSP
Pump tube: Ø25, 54 L=670+220 mm
Seals: PTFE / Teflon®
Classification: ATEX

TYPE
1:1 Nickel plated pump
PART NO.
B11741-10
DATA
Ratio: 1:1
Capacity: 40 l/min free flow
Air connection: 1/4" (F) BSP
Maximum air pressure: 1,0 (10) MPa (bar)
Inlet: 1" (F) BSP
Outlet: 3/4" (F) BSP
Material pump body: Nickel-plated steel

TYPE
Pump kit for drum
PART NO.
① 117-10 ② 117-11
DATA
Maximum air pressure: 1 (10) MPa (bar)
① Description: Stainless steel pump for dispensing aggressive fluids compatible with AISI 316, and PTFE. Example of fluids: Solvents, alcohols, detergents, sealants, inks, paint, glue, e.g. Do not use with flammable fluids. Includes: 1/4" Filter regulator, 1,5m Air line hose, 1,5m Outlet hose, 3/4" Ball valve.
Pump: 11717
② Description: Stainless steel pump for dispensing aggressive fluids compatible with AISI 316, and PTFE. Example of fluids: Solvents, alcohols, detergents, sealants, inks, paint, glue, e.g. Do not use with flammable fluids. Includes: 2,5 m Suction hose, 1/4" Filter regulator, 1,5m Air line hose, 1,5m Outlet hose, 3/4" Ball valve.
Pump: 11716



TYPE
Spray pump kit for drum
PART NO.
117-12
DATA
<p>Maximum air pressure: 1 (10) MPa (bar)</p> <p>Description: Stainless steel pump for dispensing aggressive fluids compatible with AISI 316, and PTFE. Example of fluids: Solvents, alcohols, detergents, sealants, inks, paint, glue, e.g. Do not use with flammable fluids. Includes: Needle valve, 10m chemical hose, Spray gun.</p> <p>Pump: 11717</p>

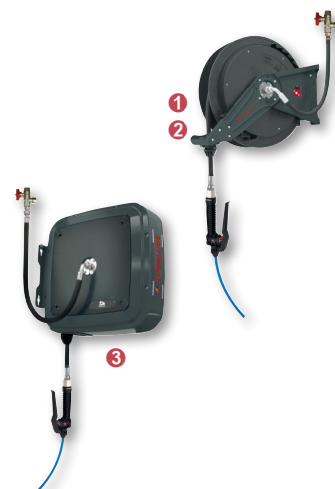
TYPE
Mixing pump 1:1
PART NO.
117-21
DATA
<p>Description: Mix Pump designed on our unique stainless steel pump. Mixing ratio 50/50%. Compatible with windscreen fluid & anti freeze. High capacity and perfect mixture. Ideal in piped systems. Consistent flow.</p> <p>Capacity: 15 l/min free flow</p> <p>Air connection: 1/4" (F) BSP</p> <p>Inlet: 3/4" (F) BSP</p> <p>Outlet: 1/2" (F) BSP</p> <p>Maximum pressure: 0,8 (8) MPa (bar)</p> <p>Hose length: 2500 mm</p>

TYPE
Ejector mixing unit
PART NO.
<p>1 117-15</p> <p>2 117-14</p>
DATA
<p>1 Description: Water operated mixing unit with ejector for windshield fluids, adjustable with nozzles between 20% to 50% mix. The wall mounted unit has a suction attachment for connection to the concentrate container. Includes: Water operated mixing unit, Mixing tank, Suction tube L = 0,9m x Ø25mm.</p> <ul style="list-style-type: none"> • Pump NOT included, see connection kit 117-14 and pump 11716. <p>2 Description: Contains inlet and outlet hoses, air connection parts</p>

TYPE
Diaphragm pump plastic 50 l/min
PART NO.
<p>1 11731</p> <p>2 11732</p>
DATA
<p>Capacity: 50 l/min free flow</p> <p>Air connection: 3/8" (F) BSP</p> <p>Maximum air pressure: 0,7 (7) MPa (bar)</p> <p>Material pump body: Polypropylene</p> <p>Connection: 1/2" (F)-(F) BSP</p> <p>1 Media: Windscreen fluid/AdBlue®</p> <p>2 Media: Fuels, solvents, Toulén, Ethanol, etc.</p>



C15-Series



TYPE
Diaphragm pump metal 50 l/min
PART NO.
11757
DATA
Media: Windscreen fluid/AdBlue®
Capacity: 50 l/min free flow
Air connection: 3/8" (F) BSP
Maximum air pressure: 0,8 (8) MPa (bar)
Material pump body: Stainless steel (AISI 316)
Connection: 1/2" - 1/2" (F)-(F) BSP

TYPE
Without hose
PART NO.
37869
DATA
Dimension: 10 (3/8") mm (inch)
Maximum pressure: 1,5 (15) MPa (bar)
Hose length: 15 m
Connection: 3/8" - 3/8" (M)-(M) BSP

TYPE
With hose
PART NO.
1 37838 3 37854 2 37836 4 37848
DATA
Dimension: 12,5 (1/2") mm (inch)
Maximum pressure: 7,5 (75) MPa (bar)
1 Hose length: 10 m
Connection: 1/2" - 1/2" (M)-(M) BSP
2 Hose length: 15 m
Connection: 1/2" - 1/2" (M)-(M) BSP
3 Hose length: 10 m
Connection: 1/2" - 1/2" (M)-(M) BSP
4 Hose length: 15 m
Connection: 1/2" - 1/2" (M)-(M) BSP

TYPE
Reel kit with control valve
PART NO.
1 387-05 2 387-03 3 387-07
DATA
Maximum working pressure: 1,5 (15) MPa (bar)
1 Description: Includes: hose reel S10 10m (37838), 1/2" ball valve with filter, control valve (10215)
Hose length: 10 m
2 Description: Includes: hose reel S15 15m (37836), 1/2" ball valve with filter, control valve (10215)
Hose length: 15 m
3 Description: Includes: hose reel C15 10m (37854), 1/2" ball valve with filter, control valve (10215)
Hose length: 10 m



CC15-Series



CC15-Series



CC15-Series



TYPE
Reel kit with meter
PART NO.
<ul style="list-style-type: none"> ❶ 387-06 ❷ 387-04 ❸ 387-08
DATA
<p>Maximum working pressure: 1,5 (15) MPa (bar)</p> <p>❶ Description: Includes: hose reel S10 10m (37838), 1/2" ball valve with filter, control valve and digital meter (10210)</p> <p>Hose length: 10 m</p> <p>❷ Description: Includes: hose reel S15 15m (37836), 1/2" ball valve with filter, control valve and digital meter (10210)</p> <p>Hose length: 15 m</p> <p>❸ Description: Includes: hose reel C15 10m (37854), 1/2" ball valve with filter, control valve and digital meter (10210)</p> <p>Hose length: 10 m</p>

TYPE
With hose
PART NO.
37872
DATA
<p>Dimension: 12,5 (1/2") mm (inch)</p> <p>Maximum pressure: 7,5 (75) MPa (bar)</p> <p>Hose length: 10 m</p> <p>Connection: 1/2" - 1/2" (M)-(M) BSP</p>

TYPE
With hose
PART NO.
37873
DATA
<p>Dimension: 12,5 (1/2") mm (inch)</p> <p>Maximum pressure: 7,5 (75) MPa (bar)</p> <p>Hose length: 15 m</p> <p>Connection: 1/2" - 1/2" (M)-(M) BSP</p>

TYPE
Reel kit with control gun
PART NO.
<ul style="list-style-type: none"> ❶ 386-05 ❷ 386-03
DATA
<p>Maximum working pressure: 7,5 (75) MPa (bar)</p> <p>❶ Description: Includes: hose reel CC15 10m (37872), 1/2" ball valve with filter, control valve (10215)</p> <p>Hose length: 10 m</p> <p>❷ Description: Includes: hose reel CC15 15m (37873), 1/2" ball valve with filter, control valve (10215)</p> <p>Hose length: 15 m</p>

CC15-Series



TYPE
Reel kit with meter
PART NO.
① 386-06 ② 386-04
DATA
Maximum working pressure: 7,5 (75) MPa (bar)
① Description: Includes: hose reel CC15 10m (37872), 1/2" ball valve with filter, control valve and digital meter (10210)
Hose length: 10 m
② Description: Includes: hose reel CC15 15m (37873), 1/2" ball valve with filter, control valve and digital meter (10210)
Hose length: 15 m

TYPE
Multi-fluid digital meter
PART NO.
30210
DATA
Capacity: 30 l/min free flow
Maximum working pressure: 3,0 (30) MPa (bar)
Seals: FKM / Viton®
Connection: 1/2" (F) BSP

TYPE
In-line meters for chemicals
PART NO.
① 1168819 ② 1168818
DATA
Capacity: 1-50 l/min free flow
Connection: 1/2" (F)-(F) BSP
① Maximum pressure: 3 (30) MPa (bar)
Material: PVC
② Maximum pressure: 10 (100) MPa (bar)
Material: Stainless steel

TYPE
Dispensing valve for fluids
PART NO.
① 10215 ② 10255 ③ 10277
DATA
Capacity: 30 l/min free flow
Maximum working pressure: 5,0 (50) MPa (bar)
Seals: FKM / Viton®
Connection: 1/2" (F) BSP
① Media: Windscreen fluid/AdBlue®/Fluids
② Media: Glycol
③ Media: Glycol



TYPE
Spray gun
PART NO.
36731
DATA
Outlet: 500 mm
Maximum pressure: 5,0 (50) MPa (bar)
Connection: 1/2" (F) BSP

TYPE
Spray guns
PART NO.
36732
DATA
Outlet: 1000 mm
Maximum pressure: 5,0 (50) MPa (bar)
Connection: 1/2" (F) BSP

TYPE
Water control valve
PART NO.
<ul style="list-style-type: none"> ❶ 36722 ❷ 3672261 ❸ 3672264
DATA
Maximum pressure: 3,0 (30) MPa (bar)
❶ Description: For water and antifreeze.
Connection: 1/4" (F) BSP
❷ Description: For water and antifreeze. With adapter.
Connection: 1/2" (F) BSP
❸ Description: For water and antifreeze. With adapter.
Connection: 3/8" (F) BSP

TYPE
Wash guns for water
PART NO.
36724
DATA
Maximum pressure: 3 (30) MPa (bar)
Connection: 1/2" (F) BSP



TYPE
Mobile sprayer 24 l
PART NO.
137-50
DATA
Description: Comprising of a 24 litres steel container, fitted with a compressed air connection and pressure gauge, Ø30 mm (1 1/4") filler hole, sight gauge and two Ø100 mm (4") wheels. Pre-load the container with compressed air 0,3-0,7 MPa (3-7 bar). The dispenser can be used without permanent connection to air pressure. Max. admissible tank capacity is 3/4 of total capacity. Complete with 1,2 m hose and spray handle. Note: Suitable for petroleum based detergents only!
Dimension: 350 x 380 x 780 mm
Volume: ~24 l

TYPE
Multi fluid hand pumps
PART NO.
1 30740 4 30735 2 30741 5 30730 3 10721
DATA
Seals: PTFE / Teflon®
1 For container: 20-25 l
Material: Polypropylene
2 For container: 50-60 l
Material: Polypropylene
3 For container: 180-200 l
Material: Polypropylene
4 For container: 20-200 l
Material: Stainless steel (AISI 316)
5 For container: 180-208 l
Material: PVC

TYPE
Drum pump 60-208 l
PART NO.
1 11646 2 11647
DATA
Capacity: 0,5 l/stroke
Riser tube length: 350-980 mm
Material: Polypropylene
1 Seals: Viton®
2 Seals: EPDM

TYPE
Glycol drainer
PART NO.
0951-500W
DATA
Description: Low trolley for efficient collection of glycol, which can easily be pumped back to the cooling system after service. Do not use with flammable liquids.
Pump: B11741-10
Volume: 95 l



NOTES

TYPE
Syphon pumps
PART NO.
<p>1 30750</p> <p>2 30752</p>
DATA
<p>1 Capacity: ~6,5 l/min free flow</p> <p>For container: 25 l</p> <p>Riser tube length: 390 mm</p> <p>2 Capacity: ~18,5 l/min free flow</p> <p>For container: 208 l</p> <p>Riser tube length: 850 mm</p>

TYPE
Measure with spout
PART NO.
<p>1 16770 3 16772</p> <p>2 16771 4 16773</p>
DATA
<p>1 Volume: 1,0 l</p> <p>2 Volume: 2,0 l</p> <p>3 Volume: 3,0 l</p> <p>4 Volume: 5,0 l</p>

TYPE
Plastic funnels
PART NO.
16761
DATA
<p>Model: Funnel 190 mm with flexible spout</p>

Notes section with horizontal lines for writing.

AdBlue® equipment

Pumps and kits **92**

Hose reels for AdBlue® **93**

Nozzles and meters **94**



TYPE
Refilling kit
PART NO.
<p>1 387-54</p> <p>2 387-53</p>
DATA
<p>1 Description: Includes: Diaphragm Pump, Suction hose with quick coupler, 4 m outlet hose, Digital Meter, Automatic nozzle, Heavy duty trolley. Can be equipped with hose reel for air to the pump, increasing the operating range.</p> <p>2 Description: Includes: 230V Electric pump 60230, Suction hose with quick coupler, 4 m outlet hose, Digital Meter, Automatic nozzle, Heavy duty trolley. Can be equipped with cable reel for the pump, increasing the operating range.</p>

TYPE
Electric pump kit
PART NO.
<p>1 387-40</p> <p>2 387-41</p> <p>3 387-42</p>
DATA
<p>1 Description: Includes: 230V Electric pump 60230, Suction hose with quick coupler, 4 m outlet hose, Manual nozzle</p> <p>2 Description: Includes: 12V Electric pump 60212, Suction hose with quick coupler, 4 m outlet hose, Manual nozzle</p> <p>3 Description: Includes: 24V Electric pump 60224, Suction hose with quick coupler, 4 m outlet hose, Manual nozzle</p>

TYPE
Electric pumps
PART NO.
<p>1 60230</p> <p>2 60212</p> <p>3 60224</p>
DATA
<p>IP: 55</p> <p>Connection: 1" (M)-(M) BSP</p> <p>1 Capacity: 30 l/min free flow</p> <p>Motor: 400 W</p> <p>Voltage: 230 V AC</p> <p>2 Capacity: 32 l/min free flow</p> <p>Motor: 260 W</p> <p>Voltage: 12 V DC</p> <p>3 Capacity: 32 l/min free flow</p> <p>Motor: 310 W</p> <p>Voltage: 24 V DC</p>

TYPE
Diaphragm pump plastic 50 l/min
PART NO.
11731
DATA
<p>Capacity: 50 l/min free flow</p> <p>Air connection: 3/8" (F) BSP</p> <p>Maximum air pressure: 0,7 (7) MPa (bar)</p> <p>Material pump body: Polypropylene</p> <p>Connection: 1/2" (F)-(F) BSP</p>



TYPE
Diaphragm pump metal 50 l/min
PART NO.
11757
DATA
Capacity: 50 l/min free flow
Air connection: 3/8" (F) BSP
Maximum air pressure: 0,8 (8) MPa (bar)
Material pump body: Stainless steel (AISI 316)
Connection: 1/2" - 1/2" (F)-(F) BSP

TYPE
S10-Series
PART NO.
37818
DATA
Dimension: 12,5 (1/2") mm (inch)
Maximum pressure: 2,0 (20) MPa (bar)
Hose length: 10 m
Connection: 1/2" - 1/2" (M)-(M) BSP

TYPE
S15-Series
PART NO.
37819
DATA
Dimension: 12,5 (1/2") mm (inch)
Maximum pressure: 2,0 (20) MPa (bar)
Hose length: 15 m
Connection: 1/2" - 1/2" (M)-(M) BSP

TYPE
Reel kit with nozzle
PART NO.
387-15
DATA
Description: Includes: Hose reel S10 10m (37818), control valve (3369175).
Hose length: 10 m

CC15-Series



T20-Series



TYPE
CC15-Series
PART NO.
<ul style="list-style-type: none"> ❶ 37886 ❷ 37887
DATA
Dimension: 12,5 (1/2") mm (inch) Maximum pressure: 2,0 (20) MPa (bar) Connection: 1/2" - 1/2" (M)-(M) BSP ❶ Hose length: 10 m ❷ Hose length: 15 m

TYPE
T20-Series
PART NO.
37847
DATA
Dimension: 19 (3/4") mm (inch) Maximum pressure: 2,0 (20) MPa (bar) Hose length: 15 m Connection: 3/4" - 3/4" (M)-(M) BSP

TYPE
Digital meter for light vehicles
PART NO.
30210
DATA
Capacity: 30 l/min free flow Maximum working pressure: 3,0 (30) MPa (bar) Connection: 1/2" (F) BSP

TYPE
Automatic nozzle for light vehicles
PART NO.
3369179
DATA
Description: AdBlue® nozzle with automatic shut-off when the tank is full. Comfortable rubber encased aluminium housing for comfortable grip at low temperature. The lever protection prevents accidental dispensing. Capacity: 10 l/min free flow Outlet: ISO 22241-5 Maximum pressure: 0,35 (3,5) MPa (bar) Connection: 1" (M) BSP



TYPE	TYPE	TYPE	TYPE
Manual nozzle for heavy vehicles	Automatic nozzle for heavy vehicles	Automatic nozzle for heavy vehicles with magnet device	Digital meter
PART NO.	PART NO.	PART NO.	PART NO.
① 3369175 ② 3369174	① 3369176 ② 3369180	3369178	1169096
DATA	DATA	DATA	DATA
<p>Capacity: 90 l/min free flow</p> <p>Outlet: Ø19 mm</p> <p>Maximum pressure: 0,5 (5) MPa (bar)</p> <p>① Description: Manufactured in polypropylene, the trigger can be locked in open position.</p> <p>Connection: 1" (F) BSP</p> <p>② Description: Manufactured in polypropylene, the trigger can be locked in open position.</p> <p>Connection: 19 (3/4") Ø mm (inch)</p>	<p>① Description: AdBlue® nozzle with automatic shut-off when the tank is full. Comfortable rubber encased aluminium housing for comfortable grip at low temperature. The lever protection prevents accidental dispensing.</p> <p>Capacity: 45 l/min free flow</p> <p>Outlet: Ø19 mm</p> <p>Maximum pressure: 0,5 (5) MPa (bar)</p> <p>Connection: Ø20 mm</p> <p>② Description: AdBlue® nozzle with automatic shut-off when the tank is full. Comfortable rubber encased aluminium housing for comfortable grip at low temperature. The lever protection prevents accidental dispensing.</p> <p>Capacity: 10 l/min free flow</p> <p>Outlet: Ø19, L=157 mm</p> <p>Maximum pressure: 0,3 (3) MPa (bar)</p> <p>Connection: 19 (3/4") mm (inch)</p>	<p>Description: AdBlue® nozzle with automatic shut-off when the tank is full. Comfortable rubber encased aluminium housing for comfortable grip at low temperature. The lever protection prevents accidental dispensing. With magnetic mis-filling device. The valve will not open unless a magnetic ring is installed in the container. One spare magnetic ring is included.</p> <p>Capacity: 45 l/min free flow</p> <p>Outlet: Ø19 mm</p> <p>Maximum pressure: 0,5 (5) MPa (bar)</p> <p>Connection: 19 (3/4") Ø mm (inch)</p>	<p>Capacity: 5-120 l/min free flow</p> <p>Maximum pressure: 1 (10) MPa (bar)</p> <p>Maximum temperature: -10 - +60 °C</p> <p>Accuracy: 1,0 % ±</p> <p>Connection: 1" (F)-(M) BSP</p>

Diesel equipment

Diesel pumps 98

Diesel meters 99

Diesel nozzle 100



TYPE
Diesel pumps only
PART NO.
<ul style="list-style-type: none"> ❶ 10101 ❷ 10112
DATA
<p>IP: 55</p> <p>Connection: 1" (F)-(F) BSP</p> <p>❶ Capacity: 40 l/min free flow</p> <p>Motor: 140 W</p> <p>Voltage: 12 V DC</p> <p>❷ Capacity: 65 l/min free flow</p> <p>Motor: 240 W</p> <p>Voltage: 24 V DC</p>

TYPE
Pump kit 12V - 40l/min
PART NO.
10100
DATA
<p>Description: Includes: 12V Diesel pump, 4m x 3/4" hose, Manual nozzle, 2m cable with crocodile clamps</p> <p>Capacity: 40 l/min free flow</p> <p>Motor: 140 W</p> <p>Voltage: 12 V AC</p>

TYPE
Pump kit 24V - 43l/min
PART NO.
10120
DATA
<p>Description: Includes: 24V Diesel pump, 4m x 3/4" hose, Manual nozzle, 2m cable with crocodile clamps</p> <p>Capacity: 40 l/min free flow</p> <p>Motor: 160 W</p> <p>Voltage: 24 V DC</p>

TYPE
Pump kit 24V - 60l/min
PART NO.
10110
DATA
<p>Description: Includes: 12V Diesel pump, 4m x 3/4" hose, Automatic nozzle, 2m cable with crocodile clamps</p> <p>Capacity: 60 l/min free flow</p> <p>Motor: 160 W</p> <p>Voltage: 12 V DC</p>

DIESEL PUMPS

DIESEL METERS



TYPE	TYPE	TYPE	TYPE
Pump kits 230V - 50 l/min	Pump kits 230V - 70 l/min	Digital diesel meter	Mechanical diesel meter
PART NO.	PART NO.	PART NO.	PART NO.
10115	10140	1168820	1168034
DATA	DATA	DATA	DATA
<p>Description: Includes: 230V 50Hz AC Diesel pump, 4m x 3/4" hose, Manual nozzle, 2m cable with plug</p> <p>Capacity: 50 l/min free flow</p> <p>Voltage: 230 V AC</p>	<p>Description: Includes: 230V 50Hz AC Diesel pump, 4m x 3/4" hose, Automatic nozzle, Mechanical meter with 3 digits, Wall bracket</p> <p>Connection: 1" (F)</p> <p>Capacity: 70 l/min free flow</p> <p>Voltage: 230 V AC</p> <p>Connection: 1" (F) BSP</p>	<p>Capacity: 80 l/min free flow</p> <p>Maximum pressure: 7 (70) MPa (bar)</p> <p>Maximum temperature: -5 - +50 °C</p> <p>Accuracy: 0,5 % ±</p> <p>Connection: 3/4" (F)-(F) BSP</p>	<p>Capacity: 10-100 l/min free flow</p> <p>Maximum pressure: 1 (10) MPa (bar)</p> <p>Connection: 1" (F) BSP</p>



TYPE
Turbine meter
PART NO.
1169096
DATA
<p>Capacity: 5-120 l/min free flow</p> <p>Maximum pressure: 1 (10) MPa (bar)</p> <p>Maximum temperature: -10 - +60 °C</p> <p>Accuracy: 1,0 % ±</p> <p>Connection: 1" (F)-(M) BSP</p>

TYPE
Automatic nozzle
PART NO.
16720
DATA
<p>Capacity: 60 l/min free flow</p> <p>Maximum pressure: 0,35 (3,5) MPa (bar)</p> <p>Connection: 1" (F) BSP</p>

TYPE
Automatic nozzle
PART NO.
16722
DATA
<p>Capacity: 90 l/min free flow</p> <p>Maximum pressure: 0,35 (3,5) MPa (bar)</p> <p>Connection: 1" (F) BSP</p>

TYPE
Diesel nozzle
PART NO.
1268983
DATA
<p>Capacity: 120 l/min free flow</p> <p>Maximum pressure: 1 (10) MPa (bar)</p> <p>Connection: 1" (F) BSP</p>



NOTES

Area for handwritten notes with horizontal dashed lines.

TYPE

Swivel

PART NO.

- 1 16725
- 2 16711

DATA

- 1 Thread: 1" - 1" (F)-(M) BSP
- 2 Thread: 3/4"-1" (F)-(M) BSP

NOTES

A large rectangular area with a thin black border, containing numerous horizontal dotted lines for writing notes.

Air equipment

Air treatment

104

Accessories for air

105

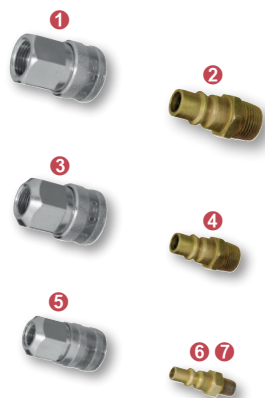


TYPE
Filter regulator
PART NO.
<ul style="list-style-type: none"> 1 18715 2 18716 3 18725
DATA
<p>Maximum pressure: 1,2 (12) MPa (bar)</p> <p>1 Connection: 1/4" (F)-(F) BSP</p> <p>2 Connection: 3/8" / 1/2" (F)-(F) BSP</p> <p>3 Connection: 3/4" (F)-(F) BSP</p>

TYPE
Regulator
PART NO.
<ul style="list-style-type: none"> 1 18721 4 1888538 2 18722 5 1888790 3 18723 6 1888795
DATA
<p>Maximum pressure: 1,2 (12) MPa (bar)</p> <p>1 Model: Regulator 1/4"</p> <p>Connection: 1/4" (F)-(F) BSP</p> <p>2 Model: Regulator 3/8"-1/2"</p> <p>Connection: 3/8" / 1/2" (F)-(F) BSP</p> <p>3 Model: Regulator 3/4"</p> <p>Connection: 3/4" (F)-(F) BSP</p> <p>4 Model: Wall bracket for 1/4" FRL</p> <p>Connection: 1/4" FRL</p> <p>5 Model: Wall bracket for 3/8-1/2" FRL</p> <p>Connection: 3/8"-1/2" FRL</p> <p>6 Model: Wall bracket for 3/4" FRL</p> <p>Connection: 3/4" FRL</p>

TYPE
Lubricators and filters
PART NO.
<ul style="list-style-type: none"> 1 18717 2 18718 3 18724
DATA
<p>Maximum pressure: 1,2 (12) MPa (bar)</p> <p>1 Connection: 1/4" (F) BSP</p> <p>2 Connection: 3/8" / 1/2" (F)-(F) BSP</p> <p>3 Connection: 3/4" (F)-(F) BSP</p>

TYPE
Filter regulator and lubricator
PART NO.
<ul style="list-style-type: none"> 1 18720 2 18719 3 18726
DATA
<p>Maximum pressure: 1,2 (12) MPa (bar)</p> <p>1 Connection: 1/4" (F)-(F) BSP</p> <p>2 Connection: 3/8" / 1/2" (F)-(F) BSP</p> <p>3 Connection: 1/4" (F)-(F) BSP</p>

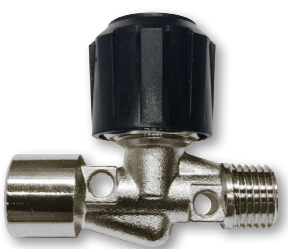


TYPE	
Quick couplers for air	
PART NO.	
1 1888122	5 1887464
2 1888521	6 1887465
3 1887494	7 1887493
4 1887551	
DATA	
Maximum pressure: 1,5 (15) MPa (bar)	
1 Connection: 1/2" (F) BSP	
2 Connection: 1/2" (M) BSPT	
3 Connection: 3/8" (F) BSP	
4 Connection: 3/8" (M) BSPT	
5 Connection: 1/4" (F) BSP	
6 Connection: 1/4" (M) BSPT	
7 Connection: 3/8" (M) BSPT	

TYPE
Tyre inflators
PART NO.
1 18740
2 18750
DATA
Maximum pressure: 1 (10) MPa (bar)
Connection: 1/4" (F) BSP
1 Description: One hand operation tyre inflator gauge. Calibrated pressure gauge with rubber shroud for protection. 65 cm hose with automatically adjusting nozzle.
2 Description: One hand operation tyre inflator.

TYPE
Quick coupling tyre valve
PART NO.
1 1887466
2 1887467
3 1887468
4 10875
DATA
1 Description: Revolutionary quick connector for tyre valves. Easy one-hand use, it is designed with a self-locking mechanism that secures the connection during inflation. Pull the sleeve to disconnect, similar to any standard air coupler. The coupler is tested and remains fully functional for 100 000 cycles and more.
Thread:
2 Description: Revolutionary quick connector for tyre valves.
Thread:
3 Description: Revolutionary quick connector for tyre valves.
Thread:
4 Description: Hose with quick coupling tyre valve nozzle, 1,5m. Suitable for 18740 and other
Thread:

TYPE
Ball valves for air
PART NO.
1887258
DATA
Model: Ball-Bleeder Valve. Made of brass 1/4" (F) BSP
Maximum working pressure: 1,4 (14) MPa (bar)



TYPE
Needle valve
PART NO.
① 1888045
② 1888047
DATA
① Thread:
1/4" (F) BSP
② Thread:
1/2" (F)-(M) BSP

NOTES

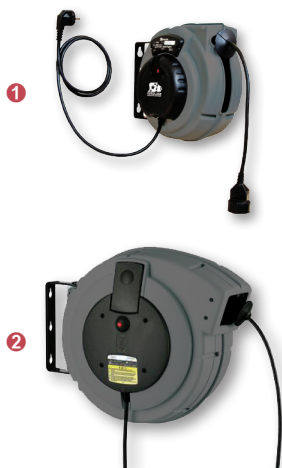
Area with horizontal dashed lines for notes.

Hose reels and accessories

Hose reels for standard duty 108

Heavy duty hose reels 112

Accessories for hose reels 117



TYPE
Cable reel 230V
PART NO.
<ul style="list-style-type: none"> 1 55010 2 55020 3 55030
DATA
<p>IP: 24</p> <p>1 Capacity: 2000 W</p> <p>Voltage: 230 V AC</p> <p>Cable: H05VV-F 3x1,5 mm</p> <p>Cable length: 15 m</p> <p>2 Capacity: 3500 W</p> <p>Voltage: 230 V AC</p> <p>Cable: H07RN-F 3x2,5 mm</p> <p>Cable length: 20 m</p> <p>3 Capacity: 3000 W</p> <p>Voltage: 400 V AC</p> <p>Cable: H07RN-F 5x1,5 mm²</p> <p>Cable length: 20 m</p>

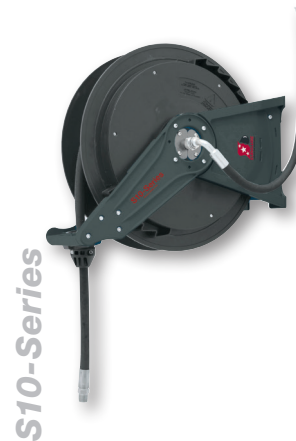
TYPE
Slow motion brake for cable reel
PART NO.
55015
DATA
<p>Description: Mounts on the cable reel and ensures that the cable is reeled in at a controlled speed. For reel 55010.</p>

TYPE
Cable reel ethernet
PART NO.
55050
DATA
<p>Voltage: 48 V DC</p> <p>Cable: CAT 5E</p> <p>Cable length: 15 m</p>

TYPE
Air / water
PART NO.
<ul style="list-style-type: none"> 1 37830 2 37831
DATA
<p>1 Description: Blue composite hose.</p> <p>Dimension: 8 mm</p> <p>Maximum pressure: 2 (20) MPa (bar)</p> <p>Hose length: 15 m</p> <p>2 Description: Extra flexible black hose.</p> <p>Dimension: 10 mm</p> <p>Maximum pressure: 2 (20) MPa (bar)</p> <p>Hose length: 12 m</p>

HOSE REELS FOR STANDARD DUTY

HOSE REELS FOR STANDARD DUTY

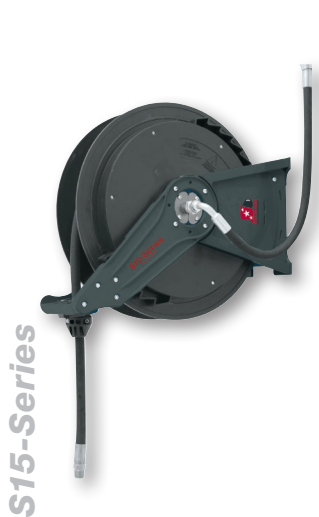


TYPE
Oil / glycol
PART NO.
17820
DATA
Dimension: 12,5 (1/2") mm (inch)
Maximum pressure: 7,5 (75) MPa (bar)
Hose length: 10 m
Connection: 1/2" - 1/2" (F)-(M) BSP

TYPE
Grease
PART NO.
27837
DATA
Dimension: 10 (3/8") mm (inch)
Maximum pressure: 35 (350) MPa (bar)
Connection: 3/8" - 3/8" (M)-(M) BSP
Hose length: 10 m max (without hose)

TYPE
Air / water
PART NO.
37866
DATA
Maximum pressure: 1,5 (15) MPa (bar)
Dimension: 10 (3/8") mm (inch)
Hose length: 10 m
Connection: 3/8" - 3/8" (M)-(M) BSP

TYPE
Various fluids
PART NO.
<ul style="list-style-type: none"> ❶ 37838 ❷ 37818
DATA
❶ Media: Windscreen fluid/Degreaser
Dimension: 12,5 (1/2") mm (inch)
Maximum pressure: 7,5 (75) MPa (bar)
Hose length: 10 m
Connection: 1/2" - 1/2" (M)-(M) BSP
❷ Media: AdBlue®
Dimension: 12,5 (1/2") mm (inch)
Maximum pressure: 2,0 (20) MPa (bar)
Hose length: 10 m
Connection: 1/2" - 1/2" (M)-(M) BSP



TYPE
Oil / glycol
PART NO.
17837
DATA
Dimension: 12,5 (1/2") mm (inch)
Maximum pressure: 7,5 (75) MPa (bar)
Connection: 1/2" - 1/2" (F)-(M) BSP
Hose length: 15 m

TYPE
Grease
PART NO.
① 27835
② 27834
DATA
Dimension: 10 (3/8") mm (inch)
Maximum pressure: 35 (350) MPa (bar)
Connection: 3/8" - 3/8" (M)-(M) BSP
① Hose length: 15 m max (without hose)
② Hose length: 15 m

TYPE
Air / water
PART NO.
① 37864
② 37865
DATA
Maximum pressure: 1,5 (15) MPa (bar)
① Dimension: 10 (3/8") mm (inch)
Hose length: 15 m
Connection: 3/8" - 3/8" (M)-(M) BSP
② Dimension: 12,5 (1/2") mm (inch)
Hose length: 15 m
Connection: 1/2" - 1/2" (M)-(M) BSP

TYPE
Various fluids
PART NO.
① 37836
② 37828
③ 37819
DATA
① Media: Windscreen fluid/Degreaser
Dimension: 12,5 (1/2") mm (inch)
Maximum pressure: 7,5 (75) MPa (bar)
Hose length: 15 m
Connection: 1/2" - 1/2" (M)-(M) BSP
② Media: Hot water
Dimension: 10 (3/8") mm (inch)
Maximum pressure: 17 (170) MPa (bar)
Hose length: 15 m
Connection: 3/8" - 3/8" (M)-(M) BSP
③ Media: AdBlue®
Dimension: 12,5 (1/2") mm (inch)
Maximum pressure: 2,0 (20) MPa (bar)
Hose length: 15 m
Connection: 1/2" - 1/2" (M)-(M) BSP

HOSE REELS FOR STANDARD DUTY

HOSE REELS FOR STANDARD DUTY

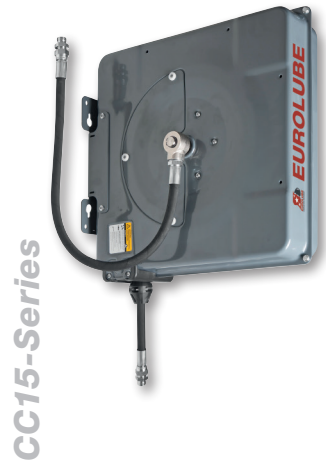
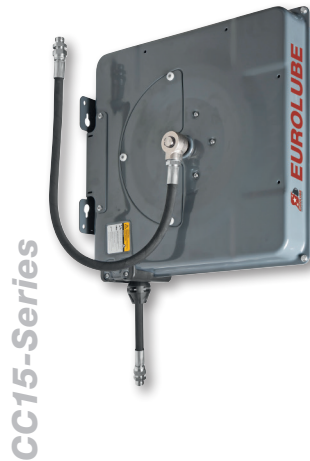
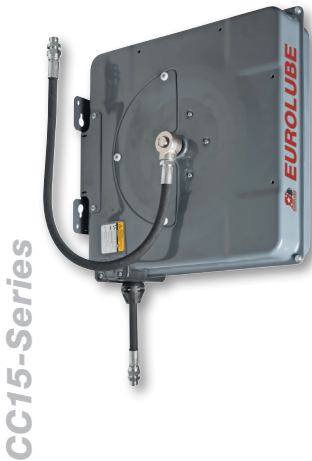


TYPE
Oil / glycol
PART NO.
<ul style="list-style-type: none"> ❶ 17844 ❷ 17840 ❸ 17843
DATA
Dimension: 12,5 (1/2") mm (inch)
Maximum pressure: 7,5 (75) MPa (bar)
Connection: 1/2" - 1/2" (F)-(M) BSP
❶ Hose length: 15 m max (without hose)
❷ Hose length: 10 m
❸ Hose length: 15 m

TYPE
Grease
PART NO.
<ul style="list-style-type: none"> ❶ 27841 ❷ 27840
DATA
Dimension: 10 (3/8") mm (inch)
Maximum pressure: 35 (350) MPa (bar)
Connection: 3/8" - 3/8" (M)-(M) BSP
❶ Hose length: 15 m max (without hose)
❷ Hose length: 15 m

TYPE
Air / water
PART NO.
<ul style="list-style-type: none"> ❶ 37869 ❷ 37870
DATA
Maximum pressure: 1,5 (15) MPa (bar)
❶ Dimension: 10 (3/8") mm (inch)
Hose length: 15 m
Connection: 3/8" - 3/8" (M)-(M) BSP
❷ Dimension: 12,5 (1/2") mm (inch)
Hose length: 15 m
Connection: 1/2" - 1/2" (M)-(M) BSP

TYPE
Various fluids
PART NO.
<ul style="list-style-type: none"> ❶ 37854 ❷ 37850
DATA
❶ Media: Windscreen fluid/Degreaser
Dimension: 12,5 (1/2") mm (inch)
Maximum pressure: 7,5 (75) MPa (bar)
Hose length: 10 m
Connection: 1/2" - 1/2" (M)-(M) BSP
❷ Media: Hot water
Dimension: 10 (3/8") mm (inch)
Maximum pressure: 17 (170) MPa (bar)
Hose length: 15 m
Connection: 3/8" - 3/8" (M)-(M) BSP

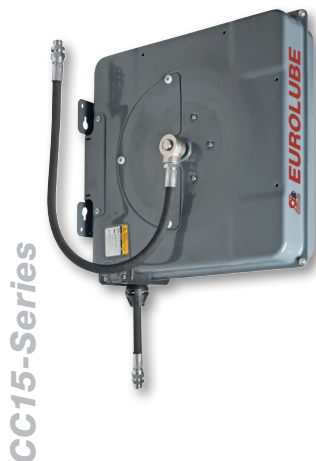


TYPE
Without hose
PART NO.
<ul style="list-style-type: none"> 1 17805 2 37805
DATA
Connection: 1/2" (M) BSP 1 Media: Oil Maximum pressure: 9 (90) MPa (bar) Hose length: 15 m max (without hose) 2 Media: Air/Water Maximum pressure: 2,0 (20) MPa (bar) Hose length: 15 m max (without hose)

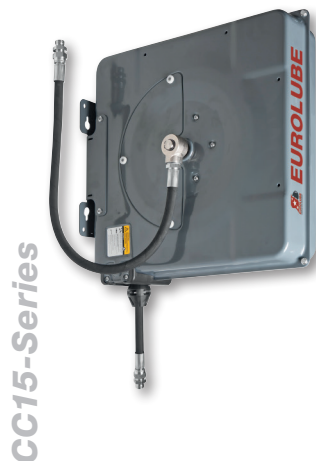
TYPE
Oil / glycol
PART NO.
<ul style="list-style-type: none"> 1 17852 2 17853
DATA
Dimension: 12,5 (1/2") mm (inch) Maximum pressure: 10 (100) MPa (bar) Connection: 1/2" - 1/2" (F)-(M) BSP 1 Hose length: 10 m 2 Hose length: 15 m

TYPE
Grease
PART NO.
<ul style="list-style-type: none"> 1 27852 2 27853
DATA
Maximum pressure: 35 (350) MPa (bar) 1 Dimension: 6,35 (1/4") mm (inch) Hose length: 10 m Connection: 1/4" - 1/4" (M)-(M) BSP 2 Dimension: 10 (3/8") mm (inch) Hose length: 15 m Connection: 3/8" - 1/4" (F)-(M) BSP

TYPE
Air / water
PART NO.
<ul style="list-style-type: none"> 1 37877 2 37878 3 37879
DATA
1 Dimension: 10 (3/8") mm (inch) Maximum pressure: 1,5 (15) MPa (bar) Hose length: 10 m Connection: 3/8" - 3/8" (M)-(M) BSP 2 Dimension: 10 (3/8") mm (inch) Maximum pressure: 1,5 (15) MPa (bar) Hose length: 15 m Connection: 3/8" - 3/8" (M)-(M) BSP 3 Dimension: 12,5 (1/2") mm (inch) Maximum pressure: 1,5 (15) MPa (bar) Hose length: 15 m Connection: 1/2" - 1/2" (M)-(M) BSP



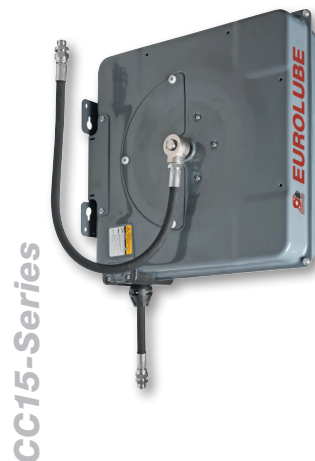
CC15-Series



CC15-Series



CC15-Series



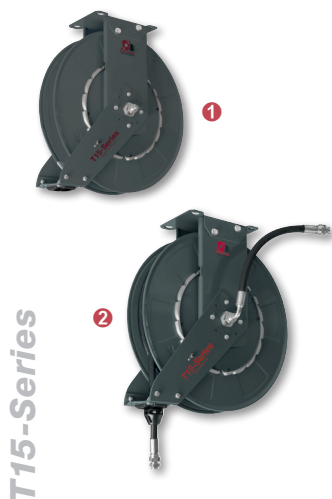
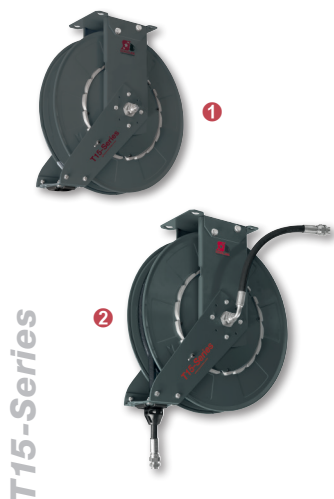
CC15-Series

TYPE
High pressure water
PART NO.
37875
DATA
Dimension: 10 (3/8") mm (inch)
Maximum pressure: 17 (170) MPa (bar)
Maximum temperature: 150 °C
Hose length: 15 m
Connection: 3/8" - 3/8" (M)-(M) BSP

TYPE
Windscreen fluid / degreaser
PART NO.
① 37872
② 37873
DATA
Dimension: 12,5 (1/2") mm (inch)
Maximum pressure: 7,5 (75) MPa (bar)
Connection: 1/2" - 1/2" (M)-(M) BSP
① Hose length: 10 m
② Hose length: 15 m

TYPE
AdBlue®
PART NO.
① 37886
② 37887
DATA
Dimension: 12,5 (1/2") mm (inch)
Maximum pressure: 2,0 (20) MPa (bar)
Connection: 1/2" - 1/2" (M)-(M) BSP
① Hose length: 10 m
② Hose length: 15 m

TYPE
Waste oil
PART NO.
37695
DATA
Dimension: 16 (5/8") mm (inch)
Inlet: 1/2" (F) BSP
Outlet: 1/2" (F)-(M) BSP
Hose length: 6 m



TYPE
Oil / glycol
PART NO.
1 17833
2 17832
DATA
Dimension: 12,5 (1/2") mm (inch)
Maximum pressure: 7,5 (75) MPa (bar)
Connection: 1/2" - 1/2" (F)-(M) BSP
1 Hose length: 15 m max (without hose)
2 Hose length: 15 m

TYPE
Grease
PART NO.
1 27833
2 27832
DATA
Dimension: 10 (3/8") mm (inch)
Maximum pressure: 35 (350) MPa (bar)
Connection: 3/8" - 3/8" (M)-(M) BSP
1 Hose length: 15 m max (without hose)
2 Hose length: 15 m

TYPE
Air / water
PART NO.
37862
DATA
Maximum pressure: 1,5 (15) MPa (bar)
Dimension: 12,5 (1/2") mm (inch)
Hose length: 15 m
Connection: 1/2" - 1/2" (M)-(M) BSP

TYPE
Various fluids
PART NO.
1 37848
2 37852
DATA
1 Media: Windscreen fluid/Degreaser
Dimension: 12,5 (1/2") mm (inch)
Maximum pressure: 7,5 (75) MPa (bar)
Hose length: 15 m
Connection: 1/2" - 1/2" (M)-(M) BSP
2 Media: Hot water
Dimension: 10 (3/8") mm (inch)
Maximum pressure: 17 (170) MPa (bar)
Hose length: 15 m
Connection: 3/8" - 3/8" (M)-(M) BSP



T20-Series



T20-Series



T20-Series



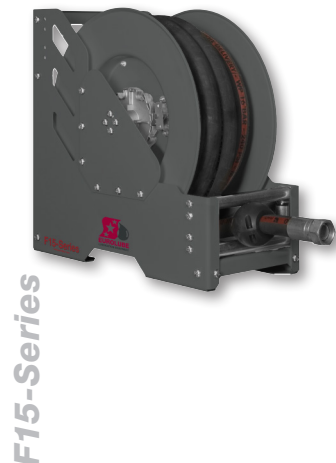
T20-Series

TYPE
Oil, glycol, air and water
PART NO.
37845
DATA
Dimension: 12,5 (1/2") mm (inch)
Maximum pressure: 7,5 (75) MPa (bar)
Hose length: 20 m max (without hose)
Connection: 1/2" - 1/2" (F)-(M) BSP

TYPE
Oil, glycol, air and water
PART NO.
<ul style="list-style-type: none"> ❶ 17834 ❷ 17836
DATA
Maximum pressure: 7,5 (75) MPa (bar)
<ul style="list-style-type: none"> ❶ Dimension: 12,5 (1/2") mm (inch) ❷ Dimension: 19 (3/4") mm (inch)
Hose length: 20 m
Connection: 1/2" - 1/2" (F)-(M) BSP
Hose length: 15 m
Connection: 3/4" - 3/4" (F)-(M) BSP

TYPE
Grease
PART NO.
27850
DATA
Dimension: 12,5 (1/2") mm (inch)
Maximum pressure: 27,5 (275) MPa (bar)
Hose length: 20 m
Connection: 1/2" - 1/2" (M)-(M) BSP

TYPE
AdBlue®
PART NO.
37847
DATA
Dimension: 19 (3/4") mm (inch)
Maximum pressure: 2,0 (20) MPa (bar)
Hose length: 15 m
Connection: 3/4" - 3/4" (M)-(M) BSP

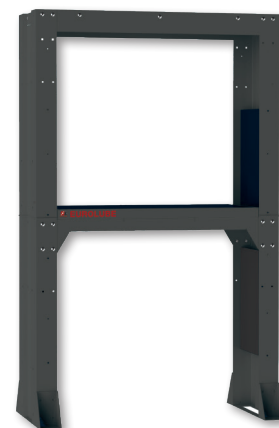
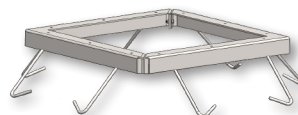
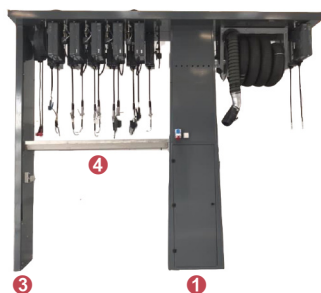


TYPE
Oil, glycol and air
PART NO.
<ul style="list-style-type: none"> ❶ 17878 ❷ 17879
DATA
<p>Maximum pressure: 7,5 (75) MPa (bar)</p> <p>❶ Dimension: 19 (3/4") mm (inch)</p> <p>Hose length: 30 m max (without hose)</p> <p>Connection: 3/4" - 1" (M)-(M) BSP</p> <p>❷ Dimension: 25,4 (1") mm (inch)</p> <p>Hose length: 30 m max (without hose)</p> <p>Connection: 1" - 1" (M)-(M) BSP</p>

TYPE
Oil, glycol and air
PART NO.
<ul style="list-style-type: none"> ❶ 17880 ❷ 17881 ❸ 17882
DATA
<p>Maximum pressure: 7,5 (75) MPa (bar)</p> <p>❶ Dimension: 12,5 (1/2") mm (inch)</p> <p>Hose length: 30 m</p> <p>Connection: 1/2" - 1/2" (M)-(M) BSP</p> <p>❷ Dimension: 19 (3/4") mm (inch)</p> <p>Hose length: 25 m</p> <p>Connection: 3/4" - 3/4" (F)-(M) BSP</p> <p>❸ Dimension: 25,4 (1") mm (inch)</p> <p>Hose length: 15 m</p> <p>Connection: 1" - 1" (F)-(M) BSP</p>

TYPE
Diesel, air
PART NO.
17882
DATA
<p>Dimension: 25,4 (1") mm (inch)</p> <p>Maximum pressure: 7,5 (75) MPa (bar)</p> <p>Hose length: 15 m</p> <p>Connection: 1" - 1" (F)-(M) BSP</p>

TYPE
Oil, glycol and air
PART NO.
17885
DATA
<p>Dimension: 38,1 (1 1/2") mm (inch)</p> <p>Maximum pressure: 2,0 (20) MPa (bar)</p> <p>Hose length: 15 m</p> <p>Connection: 1 1/2" - 1 1/2" (M)-(M) BSP</p>

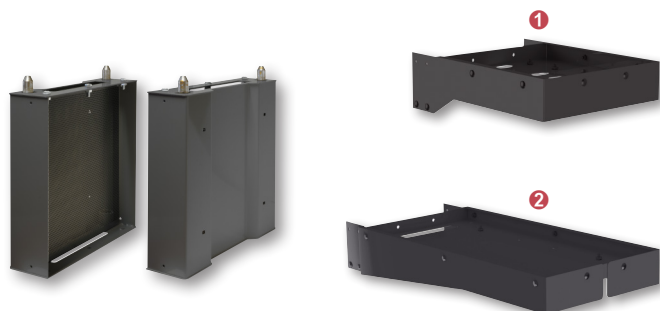


TYPE
Service tower, wide model
PART NO.
① 17875 ② 17877
DATA
Dimension: L2,35 x W1,66 x H3,60 m ① Description: Service tower for truck workshop, can be equipped with a variety of hose reels and provides a single source centre for oil, grease, anti-freeze and exhaust systems. Up to 16 Hose Reels can be fitted and one exhaust hose reel. Concrete fastener must be ordered separately, P/N.: 17776. Size: LxWxH: 2350 x 1660 x 3600 mm ② Description: Service tower for truck workshop, can be equipped with a variety of hose reels and provides a single source centre for oil, grease, anti-freeze and exhaust systems. Up to 16 Hose reels and 2 exhaust hose reels can be fitted. Concrete fastener must be ordered separately, P/N.: 17776. Size: LxWxH: 2350 x 1660 x 3600 mm

TYPE
Service tower, narrow model
PART NO.
① 17873 ③ 17860 ② 17874 ④ 17859
DATA
① Model: Service Tower Narrow Head for 1 Exhaust Reel Dimension: 3620 x 4420 x 1100 mm ② Model: Service Tower Narrow Head for 2 Exhaust Reel Dimension: 3620 x 5120 x 1100 mm ③ Model: End Plate For Narrow Head Dimension: 3500 x 550 x 101 mm ④ Model: Drip Pan L=2085 mm, for service tower 17873 Dimension: 2085 x 400 x 185 mm

TYPE
Embedded bracket for service tower
PART NO.
17776
DATA
Description: Concrete fastener for casting into floors, provides a supreme mounting platform for the 17875/17877 service stand. The frame design provides clearance for running piping, hoses and ventilation ducts up through the service stand.

TYPE
Service stand
PART NO.
① 17865 ② 17869
DATA
① Description: Service stand for up to 6 Hose Reels. Possibility to fit a 50kg Grease drum with pump under the drip tray. Fits hose reels series: S10, S15, T15 & CC15. Full size: H2600 x W1540 x D760 mm. Nuts for Hose Reels included. ② Description: Service stand for up to 6 Hose Reels. Possibility to fit a 50kg Grease drum with pump under the drip tray. Fits all our Hose Reels, including C15 and T20. Full size: H2600 x W1970 x D760 mm. Nuts for hose reels included.

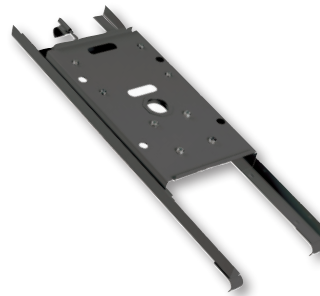


TYPE
Height extension kit for service stand
PART NO.
17864
DATA
<p>Description: In workshops with high vehicles it's an advantage that hose reels are higher up. With our height adapter, the total height of Service stands 17865/69 is 3,1m.</p> <p>Height: 500 mm</p>

TYPE
Additional brackets for service stand
PART NO.
<p>① 17861</p> <p>② 17863</p>
DATA
<p>① Description: With this console, two additional hose reels can be mounted on 17865 and 17869. Placed on either side of service stand.</p> <p>Length: 555 mm</p> <p>② Description: With this console, 1 pc Exhaust Reels can be mounted on 17865 and 17869. Placed on either side of service stand.</p> <p>Length: 1110 mm</p>

TYPE
Service stand for 3 reels
PART NO.
17866
DATA
<p>Description: Service stand for up to 3 hose reels. Includes drip tray. Fits hose reels series: S10, S15, T15 and CC15. Full size: H2250 x W1200 x D350 mm. Nuts for hose reels included.</p>

TYPE
Service stand for 5 reels
PART NO.
17867
DATA
<p>Description: Service stand for up to 5 hose reels. Includes drip tray. Fits hose reels series: S10, S15, T15 & CC15. Full size: H2250 x W1750 x D350 mm. Nuts for hose reels included.</p>

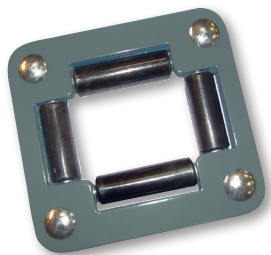


TYPE
Reel post
PART NO.
17862
DATA
<p>Description: Column for mounting 2 Hose reels. Size: H2400 x W400 x D320 mm. Pre-drilled holes for T15, S10, S15, C15 and CC15 reels.</p>

TYPE
Pivoting wall bracket for S10, S15, CC15, C15 & T15-ser.
PART NO.
17751
DATA
<p>Description: The reels can be turned up to 145° by using the pivoted bracket. Fits our Reels: S10, S15, CC15, C15 and T15.</p>

TYPE
IBC bracket for pump and reel
PART NO.
1069237
DATA
<p>Description: Bracket for installation of our air operated pumps and hose reels on an IBC tank. Fits our Reels: S10, S15, CC15, C15 and T15.</p> <p>Connection: 2" (F) BSP</p>

TYPE
Mounting bracket
PART NO.
<p>① 17757 ② 17758 ③ 17759</p>
DATA
<p>① Model: Mounting plate - 2 hose reels</p> <p>② Model: Mounting plate - 3 hose reels</p> <p>③ Model: Mounting plate - 5 hose reels</p>



TYPE
Hose guide
PART NO.
1145998
DATA
Description: Used when mounting a hose reel in a cabinet . Max. hose diameter Ø 42 mm.
Dimension: 110x110 mm

NOTES

Area with horizontal dashed lines for notes.

EUROLUBE LUBRICATION EQUIPMENT

Drum handling



TYPE
Trolley for 208 l drums
PART NO.
<ul style="list-style-type: none"> 1 26720 2 2068734 3 2068735
DATA
<p>1 Description: Trolley suitable for 208 l drums, designed for mobile oil dispensing, mobile grease kits, transport of drums etc. Pump and hose reel can be mounted by use of our brackets. With two large roller bearing wheels Ø200mm and one double braked castor wheel.</p> <p>2 Description: Easy to fit our bracket 16730 and electrical oil pumps.</p> <p>3 Description: For easy assembly of our hose reels 10-15 series.</p>

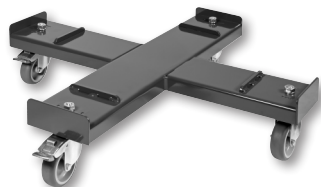
TYPE
Heavy duty trolley for 208 l drums
PART NO.
<ul style="list-style-type: none"> 1 26757 2 26747
DATA
<p>1 Description: Our universal trolleys suitable for 20-208 l drums are designed for mobile oil dispensing, mobile grease kits, transport of drums etc. Pump and hose reel can be mounted by use of our brackets. With two large roller bearing wheels Ø260mm and one double braked castor wheel. Accessories: Hose reel bracket 1357213</p> <p>2 Description: Heavy duty trolley with two Ø 260 mm wheels and one solid rubber swivelling wheel with brake. Includes an adjustable chain for securing the drum and a bracket mounted on the handle for fixing an air operated pump. A hose reel can also be mounted using optional bracket (1357213)</p>

TYPE
Trolley for 50-60 l drums
PART NO.
1003-100
DATA
<p>Description: Sturdy trolley suitable for 50-60L drum designed for mobile oil dispensing, mobile grease kits, transport of drums etc.</p> <p>Solid construction and very easy to equip to a complete dispenser for any need. Heavy duty trolley for 50-60L drums with two large wheels and two castor wheels.</p>

TYPE
Trolley for 20-60 l drums
PART NO.
<ul style="list-style-type: none"> 1 0985-100 2 26755
DATA
<p>1 Description: Solid construction and very easy to equip to a complete dispenser for any need. With two wheels and drum securing chain.</p> <p>2 Description: Compact construction and very easy to equip to a complete dispenser for any need. Sturdy locking device for oil and grease drums. Holder for hose included.</p>

DRUM HANDLING

DRUM HANDLING



TYPE
Spill safe drum trolley
PART NO.
1 16860 3 16862 2 16861 4 137-55
DATA
<p>1 Description: Drum trolley (26720) with three wheels, 2 large Ø200 mm and one support wheel Ø100 mm, which is equipped with a brake. With spill containment, suitable for all sizes and types of drum, up to 208 l.</p> <p>2 Description: Drum trolley (28646) Heavy duty. With 3 wheels, 2 large tyres Ø260 mm and one support wheel Ø150 mm, equipped with a brake. With spill containment, suitable for all sizes and types of drum, up to 208 l.</p> <p>3 Description: Drum trolley (26747) with 3 wheels, 2 large hard wheels Ø260 mm and one support wheel Ø150 mm, equipped with a brake. With spill containment, suitable for all sizes and types of drum, up to 208 l.</p> <p>4 Description: Drum bund for mounting on existing trolley. If the drum were to start leaking, there will be no spillage on the floor or ground. When there is no area to normally park ordinary drum trolleys at the end of the day, this is the ideal solution. For 26720, 26757 and 26747. Drilling during assembly is required.</p>

TYPE
Drum dolly
PART NO.
26744
DATA
<p>Description: Compact drum dolly for easy transport of drums. 4 pcs wheel of which 2 pcs are locking</p>

TYPE
For drums
PART NO.
1 318-60 2 318-61
DATA
<p>1 Model: Drum bund for 2 drums</p> <p>Volume: 220 l</p> <p>Material: Steel</p> <p>2 Model: Plastic drum bund for 2 drums</p> <p>Volume: 250 l</p> <p>Material: Polyethylene</p>

TYPE
Hydraulic drum lift
PART NO.
26890
DATA
<p>Description: Designed to handle steel drums on safety pallets and equipped with a pedal operated hydraulic lift. Max lift height 600mm. Dimensions: width 1045 mm, min height 1340 mm, max height 1840 mm, Lifting weight max 250kg</p>



NOTES

Area with horizontal dashed lines for taking notes.

TYPE
Drum taps
PART NO.
16704
DATA
Model: Drum tap 2"
Connection: 2" (M) BSP

TYPE
Level gauge
PART NO.
26780
DATA
Model: Level gauge for 208 l drums
Connection: 3/4" (M) BSP

117-01	21	257-32FP	57	317-66	73	1820-1	70
117-02	20	257-33	58	318-30	76	1822-A1	70
117-08	20	257-33FP	58	318-45	74	1823-1	70
117-10	83	257-34	58	318-51	75	1961-S	68
117-11	83	257-34FP	58	318-60	123	1966-S	68
117-12	84	257-35	58	318-61	123	2105	68
117-14	84	257-35FP	58	318-62	74	2106	68
117-15	84	257-36	59	318-63	75	2107	68
117-21	84	257-36FP	59	318-64	74	2108	68
117-90	11	257-37	59	318-65	74	2109	68
117-90	21	257-37FP	59	318-66	74	2110	68
137-01	23	257-39	57	318-67	74	2112	68
137-02	23	257-39FP	57	318-68	75	2114	68
137-03	24	257-40	58	318-80	75	10100	98
137-04	24	257-40FP	58	318-81	76	10101	98
137-05	24	257-51	56	318-82	76	10110	98
137-09	28	257-52	56	318-85	75	10112	98
137-10	28	257-55	56	318-86	76	10115	99
137-11	22	257-56	56	318-87	76	10120	98
137-12	22	316-12	34	327-04	61	10140	99
137-12EF	22	316-13	34	327-12	61	10215	87
137-13	27	316-14	35	386-03	86	10255	87
137-14	27	316-15	35	386-04	87	10277	87
137-15	29	316-19	35	386-05	86	10305	40
137-16	29	316-20	35	386-06	87	10336	40
137-17	28	317-01	33	387-03	85	10336EF	40
137-18	28	317-03	34	387-04	86	10371	38
137-19	23	317-04	34	387-05	85	10372	39
137-21	59	317-05	35	387-06	86	10376	40
137-22	59	317-06	36	387-07	85	10377	40
137-23	29	317-07	36	387-08	86	10391	39
137-24	29	317-08	36	387-15	93	10396	40
137-25	28	317-09	37	387-40	92	10422	39
137-26	28	317-10	37	387-41	92	10452	39
137-27	23	317-11	33	387-42	92	10471	39
137-35	43	317-12	32	387-53	92	10472	39
137-36	43	317-13	32	387-54	92	10491	39
137-37	43	317-14	33	501-A	69	10522	11
137-38	43	317-14EF	33	512-RF	68	10552	11
137-46	20	317-15	33	0925-026	48	10571	11
137-46	29	317-15EF	33	0925-400	48	10572	11
137-50	89	317-19	33	0949-160	73	10591	11
137-55	123	317-20	33	0951-200	78	10710	44
137-57	21	317-21	36	0951-500	78	10720	42
137-60	24	317-22	37	0951-500W	89	10721	89
137-61	24	317-23	37	0951-700	78	10730	42
137-62	25	317-25	33	0951-900	79	10875	105
157-03	26	317-26	34	0985-100	122	11645	42
157-04	26	317-27	34	1003-100	122	11646	89
157-25	28	317-28	34	1606-B	68	11647	89
157-26	28	317-44	72	1607-B	67	11716	82
208-A	69	317-44	75	1610-BL	67	11717	82
257-03FP	59	317-44SP	72	1613-B	68	11731	84
257-05	59	317-44SP	75	1627-B	67	11731	92
257-06	59	317-60	72	1627-S	67	11732	84
257-22	60	317-61	73	1629-B	68	11757	85
257-31	57	317-62	73	1634	67	11757	93
257-31FP	57	317-63	73	1669-B	67	11780	76
257-32	57	317-65	72	1688-B	68	12740	82

12741	83	16773	90	17879	37	26700	57
12745	82	16780	42	17879	116	26705	55
12746	83	16781	47	17880	37	26710	65
13770	22	16782	47	17880	116	26711	65
15740	27	16789	42	17881	37	26712	65
15740	54	16790	77	17881	116	26715	64
15741	27	16791	76	17882	38	26716	63
15741	54	16793	77	17882	116	26716-01	63
15755	25	16794	77	17882	116	26716-11	63
15756	26	16797	79	17885	38	26718	67
15765	27	16813	39	17885	116	26720	122
15766	27	16818	39	18715	104	26721	66
15767	26	16860	123	18716	104	26722	66
15830	25	16861	123	18717	104	26723	66
15831	25	16862	123	18718	104	26725	66
15832	72	17751	119	18719	104	26726	66
16703	41	17757	119	18720	104	26727	66
16704	124	17758	119	18721	104	26728	66
16705	47	17759	119	18722	104	26729	66
16708	41	17776	117	18723	104	26730	66
16709	47	17805	112	18724	104	26731	66
16710-50	45	17820	32	18725	104	26732	66
16711	101	17820	109	18726	104	26733	66
16711-50	45	17832	35	18740	105	26739	67
16716	38	17832	114	18750	105	26741	55
16719	38	17833	35	20701	62	26742	55
16720	100	17833	114	20702	62	26744	123
16721	41	17834	36	20703	62	26746	55
16722	100	17834	115	20706	62	26747	122
16724	41	17836	36	20710	60	26752	64
16725	101	17836	115	20711	60	26755	122
16730	46	17837	32	20712	60	26757	122
16733	46	17837	110	20720	60	26760	65
16735	45	17840	33	20721	60	26762	65
16737	45	17840	111	20730	62	26763	65
16740	45	17843	33	20731	62	26764	65
16741	45	17843	111	20742	62	26765	65
16742	45	17844	33	20745	62	26767	65
16743	45	17844	111	25532	63	26768	65
16744	45	17852	34	25534	63	26769	65
16745	45	17852	112	25720	54	26770	64
16747	45	17853	34	25725	54	26771	64
16749	47	17853	112	25730	53	26772	64
16750	44	17859	117	25731	53	26773	64
16751	44	17860	117	25732	53	26774	64
16753	44	17861	118	25735	52	26775	65
16754	44	17862	119	25736	52	26778	64
16755	41	17863	118	25737	52	26780	124
16761	49	17864	118	25745	53	26784	60
16761	90	17865	117	25746	53	26890	123
16764	44	17866	118	25765	52	27832	61
16765-60	44	17867	118	25766	52	27832	114
16770	49	17869	117	25767	52	27833	61
16770	90	17873	117	25770	64	27833	114
16771	49	17874	117	25787	53	27834	61
16771	90	17875	117	25788	53	27834	110
16772	49	17877	117	25794	52	27835	61
16772	90	17878	37	25795	52	27835	110
16773	49	17878	116	25796	52	27837	61

27837	109	37878	112	53877	13	1155153	48
27840	61	37879	112	53878	13	1157234	48
27840	111	37886	94	53881	10	1167431	41
27841	61	37886	113	53882	15	1167744	41
27841	111	37887	94	53883	16	1167783	41
27850	61	37887	113	53886	15	1168034	99
27850	115	43706	69	53890	15	1168574	14
27852	61	43718	69	53890-25	15	1168578	14
27852	112	43762	69	53890-50	15	1168591	41
27853	61	43770	67	53890-125	15	1168595	41
27853	112	43771	67	53890-250	15	1168683	41
30210	87	47100	70	53891	15	1168684	41
30210	94	53132	17	53892	15	1168686	41
30730	89	53154	17	53893	15	1168813	13
30735	89	53171	16	55010	108	1168814	13
30740	89	53183	16	55015	108	1168815	13
30741	89	53191	16	55020	108	1168816	13
30750	90	53192	16	55030	108	1168817	39
30752	90	53193	16	55050	108	1168818	87
36722	88	53197	15	60100	29	1168819	87
36724	88	53287	16	60110	29	1168820	40
36731	88	53393-50	16	60212	92	1168820	99
36732	88	53393-100	16	60224	92	1168964	14
37695	113	53417	17	60230	92	1168980	14
37805	112	53417-1	17	60300	30	1168985	14
37818	93	53437	17	60310	30	1169096	95
37818	109	53792	12	61012	29	1169096	100
37819	93	53801	8	61013	31	1169340	41
37819	110	53802	8	61024	29	1169350	41
37828	110	53803	11	61025	31	1169360	41
37830	108	53804	11	61611	30	1268983	100
37831	108	53820	8	61614	30	1317180	46
37836	85	53821	8	62000	32	1317181	46
37836	110	53822	8	62001	32	1357676	46
37838	85	53823	8	62010	31	1367258	45
37838	109	53824	9	62011	31	1367259	45
37845	36	53826	10	62020	30	1367262	45
37845	115	53827	10	62021	30	1367264	46
37847	94	53828	10	62100	31	1367265	46
37847	115	53829	10	131000	70	1367266	46
37848	85	53830	9	300805	70	1367267	46
37848	114	53831	9	304810	70	1367268	46
37850	111	53835	10	317400	70	1367269	46
37852	114	53836	9	323060	70	1367270	46
37854	85	53850	12	339841	70	1367271	46
37854	111	53860	12	1069237	47	1367347	46
37862	114	53861	12	1069237	119	1367422	46
37864	110	53862	12	1117065	48	1367587	46
37865	110	53863	12	1117178	48	1367594	46
37866	109	53864	12	1117277	48	1367769	77
37869	85	53865	12	1117610	48	1367770	77
37869	111	53866	12	1117701	48	1367771	78
37870	111	53868	13	1117704	48	1367772	78
37872	86	53870	13	1117705	48	1568507	48
37872	113	53871	13	1117707	48	1887257	45
37873	86	53872	13	1117718	48	1887258	105
37873	113	53874	13	1118436	48	1887260	45
37875	113	53875	13	1137123	48	1887464	105
37877	112	53876	13	1145998	120	1887465	105

1887466	105	B13760	21
1887467	105	B13761	22
1887468	105	B13762	21
1887493	105	C11745	72
1887494	105		
1887551	105		
1888045	106		
1888047	106		
1888122	105		
1888521	105		
1888538	104		
1888790	104		
1888795	104		
2060201	66		
2068734	122		
2068735	122		
2150210	52		
2168600	64		
2168920	64		
2169182	67		
2169183	67		
2169184	67		
2169185	67		
2357404	54		
2357405	54		
2553201	63		
2553401	63		
2553402	63		
3188579	79		
3188587	77		
3188588	77		
3188595	77		
3188596	77		
3188771	79		
3188772	79		
3218018	96		
3218020	96		
3315098	73		
3318791	14		
3318795	14		
3368514	14		
3368519	48		
3368520	48		
3369174	95		
3369175	95		
3369176	95		
3369178	95		
3369179	94		
3369180	95		
3369190	96		
3369191	96		
3672261	88		
3672264	88		
A-210	69		
A-212	69		
A-1184	69		
B11740	20		
B11741	20		
B11741-10	83		

24-HOUR ONLINE SUPPORT & ORDERING

ENGLISH ▾

PHONE: +46 8-747 67 10

YOUR SHOPPING BASKET

LOG IN



ABOUT US OUR SOLUTIONS PUMP SELECTION GUIDE DISTRIBUTORS CONTACT US

Products

- ▶ NEX-U-®
- ▶ LUBE-Master
- ▶ Oil equipment
- ▶ Grease equipment
- ▶ Diaphragm pumps
- ▶ Waste oil equipment
- ▶ Multi-Fluid equipment
- ▶ Equipment for AdBlue®
- ▶ Equipment for diesel
- ▶ Compressed air
- ▶ Hose & cable reels
- ▶ Drum handling



One of the cornerstones of Eurolube service is instant support in whatever you may require.

TECHNICAL DOCUMENTS

On our website you will be able to easily explore our full product range with detailed photographs, descriptions in English, Swedish and German, individual product data, downloads of manuals and leaflets, and the ability to request quotations on particular products.

PUMP SELECTION GUIDE

We have also developed a tool to aid you in selecting the correct pump for the task. Using our pump selection guide you simply select the fluid to be pumped, and it will tell you which materials are compatible.

ONLINE ORDERING

For our registered distributors, we offer the functionality to log in and place orders directly on our website. When you are logged in as a distributor, you can access e.g.

- Prices and discounts
- Order history
- Downloads for LUBE-Master and related systems
- See precise stock levels



www.eurolube.com

EUROLUBE ACADEMY

Eurolube is proud to announce the launch of the new Eurolube Academy, a complete product training environment complete with a fully equipped NEX-U-® fluid management system. It's designed to train our distributors and end users in the professional handling and use of Eurolube equipment and installation technology. The training focuses on the environment, safety, economy and practical handling of fluid systems.

Contact us if you are interested in learning more.





EUROLUBE EQUIPMENT

BY ALENTEC & ORION AB

GRUSTAGSVÄGEN 4, 138 40 ÄLTA, SWEDEN

EMAIL eurolube@alentec.se

PHONE **+46 8-747 67 10**

 www.eurolube.com

DISTRIBUTED BY: